

2355 LEWIS AVE

Rockville, MD, 20851
Montgomery County

NEWLY
RENOVATED

UP TO 24,522 SF AVAILABLE
FLEX BUILDING



PROPERTY INFORMATION

- Drive In Bays: 3
- Exterior Docks: 4
- Parking Spaces: 75
- Lot Size: 1.5 Acres
- Showroom
- Heavy 3P Power 1600A w. Generator
- Rockville City Zoning I-L (former I-2)
- Rear fenced lot/IOS/Truck Court
- Minutes from Rockville Pike, I-270, and major business corridors
- Walkable to restaurants, retail, hotels and fitness centers
- 2 Blocks from TwinBrook Metro Station

LEASED BY:

klnb

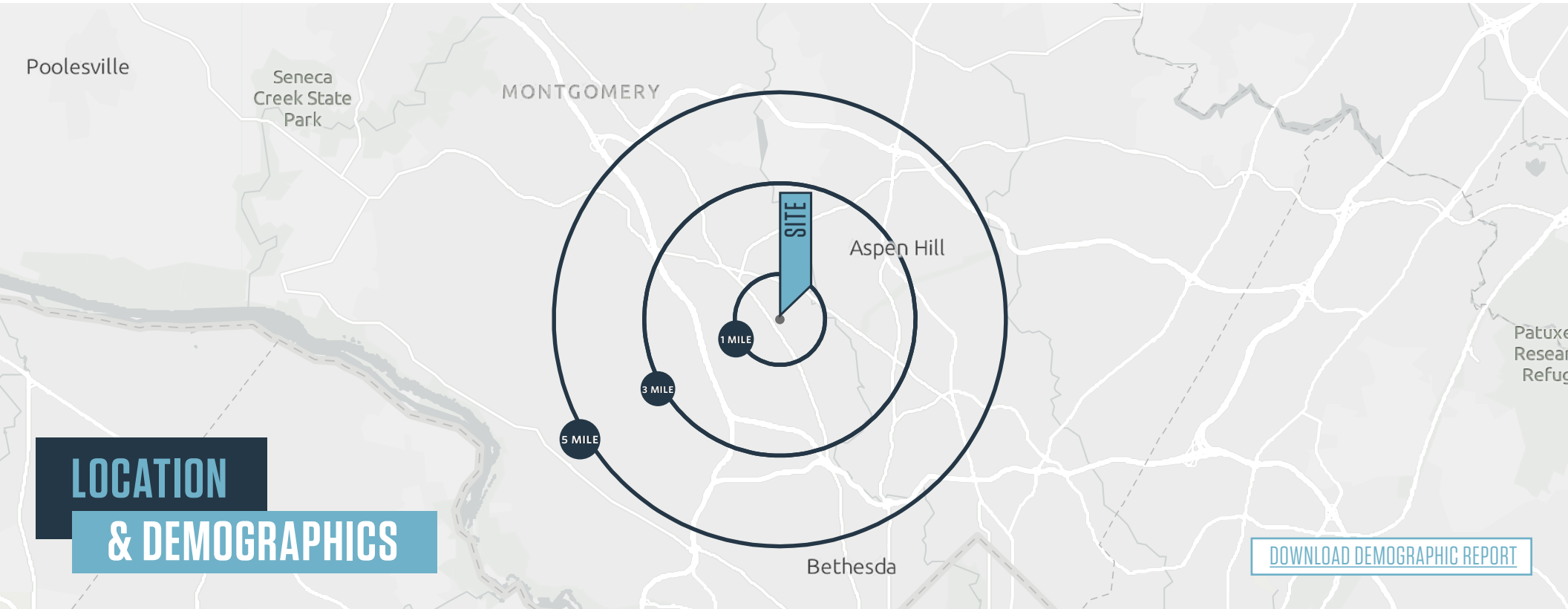
Lucas Glaeser
301-265-5614
lglaeser@klnb.com

Kenneth Fellows
301-222-0210
kfellows@klnb.com

12435 Park Potomac Ave, Suite 250
Rockville, MD 20854
klnb.com




2355 LEWIS AVE

Rockville, MD, 20851
Montgomery County



LOCATION & DEMOGRAPHICS

[DOWNLOAD DEMOGRAPHIC REPORT](#)

	1-MILE	3-MILES	5-MILES				
	Population 24,064	127,249	199,824		Households 9,928	47,218	73,295
	Daytime Population 35,348	151,503	213,904		Average Household Income \$121,741	\$183,630	\$194,975

Lucas Glaeser
lglaeser@klnb.com
301-265-5614

Kenneth Fellows
kfellows@klnb.com
301-222-0210

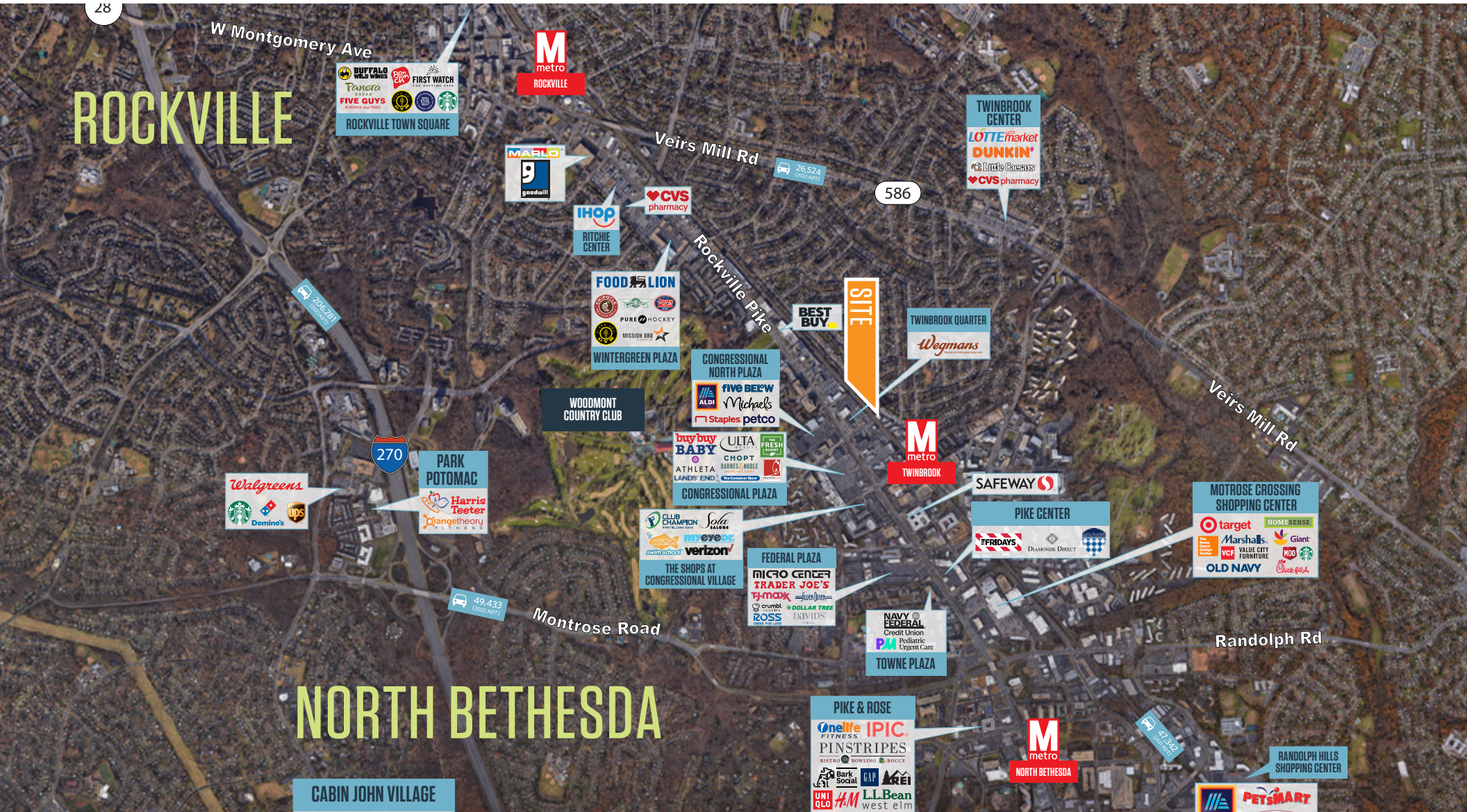
12435 Park Potomac Ave, Suite 250
Rockville MD, 20854
klnb.com



2355 LEWIS AVE

Rockville, MD, 20851
Montgomery County

MARKET AERIAL



Lucas Glaeser
lglaeser@klnb.com
301-265-5614

Kenneth Fellows
kfellows@klnb.com
301-222-0210

12435 Park Potomac Ave, Suite 250
Rockville MD, 20854
klnb.com



2355 LEWIS AVE

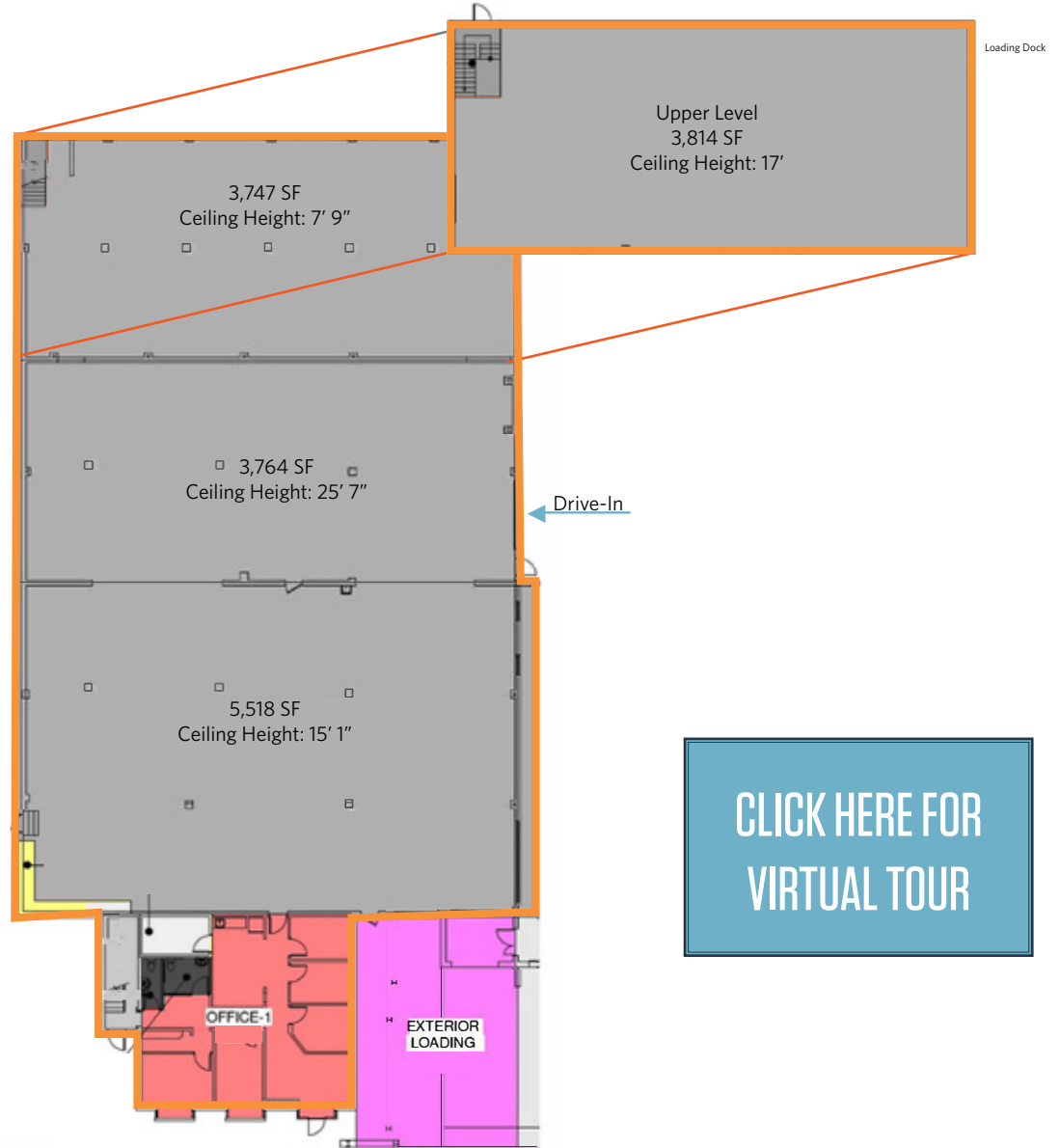
Rockville, MD, 20851
Montgomery County

Suite A | +/- 18,238 SF

- 2 drive-ins and 1 loading dock
- Newly renovated modern office with 2 restrooms, a kitchen, and a private entrance



FLOOR PLAN



[CLICK HERE FOR VIRTUAL TOUR](#)

Lucas Glaeser
lglaeser@klnb.com
301-265-5614

Kenneth Fellows
kfellows@klnb.com
301-222-0210

12435 Park Potomac Ave, Suite 250
Rockville MD, 20854
klnb.com

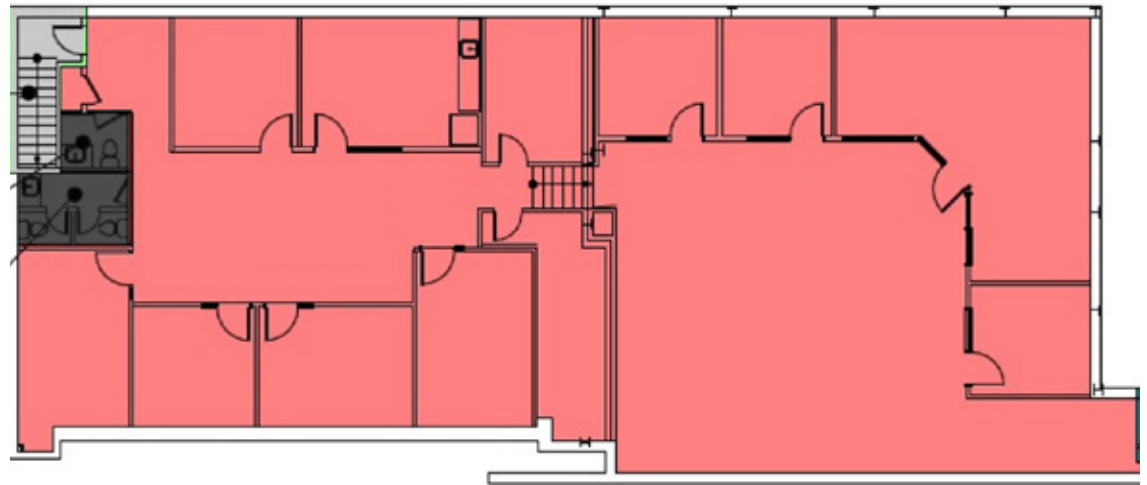
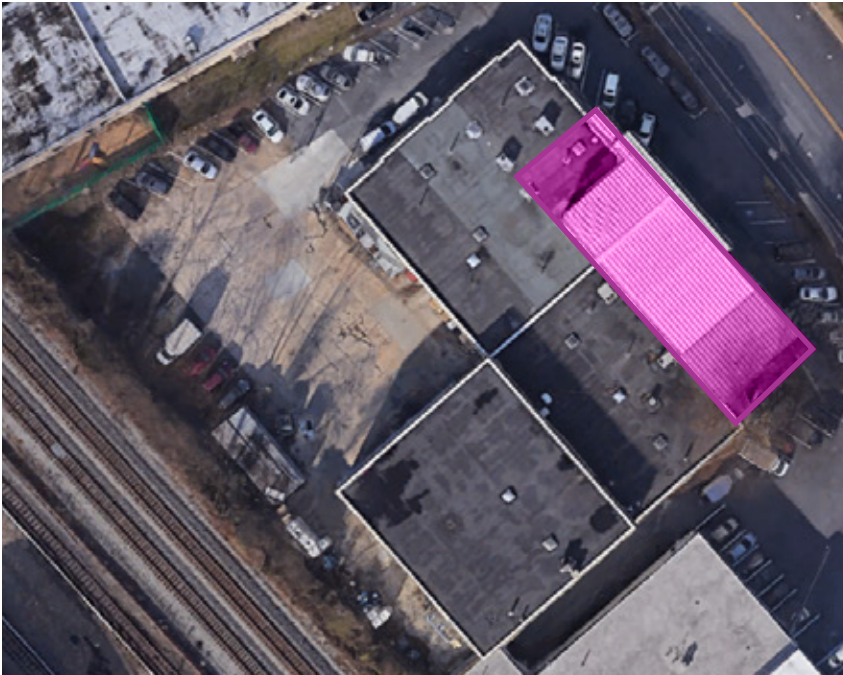
klnb

2355 LEWIS AVE

Rockville, MD, 20851
Montgomery County

Suite D | +/- 4,076 SF

- Second Floor Office
- 2 restrooms, two private entrances
- Move-in ready office configuration



FLOOR PLAN

[CLICK HERE FOR VIRTUAL TOUR](#)

Lucas Glaeser
lglaeser@klnb.com
301-265-5614

Kenneth Fellows
kfellows@klnb.com
301-222-0210

12435 Park Potomac Ave, Suite 250
Rockville MD, 20854
klnb.com



2355 LEWIS AVE

Rockville, MD, 20851
Montgomery County



SUITE D

SUITE A

Lucas Glaeser
lglaeser@klnb.com
301-265-5614

Kenneth Fellows
kfellows@klnb.com
301-222-0210

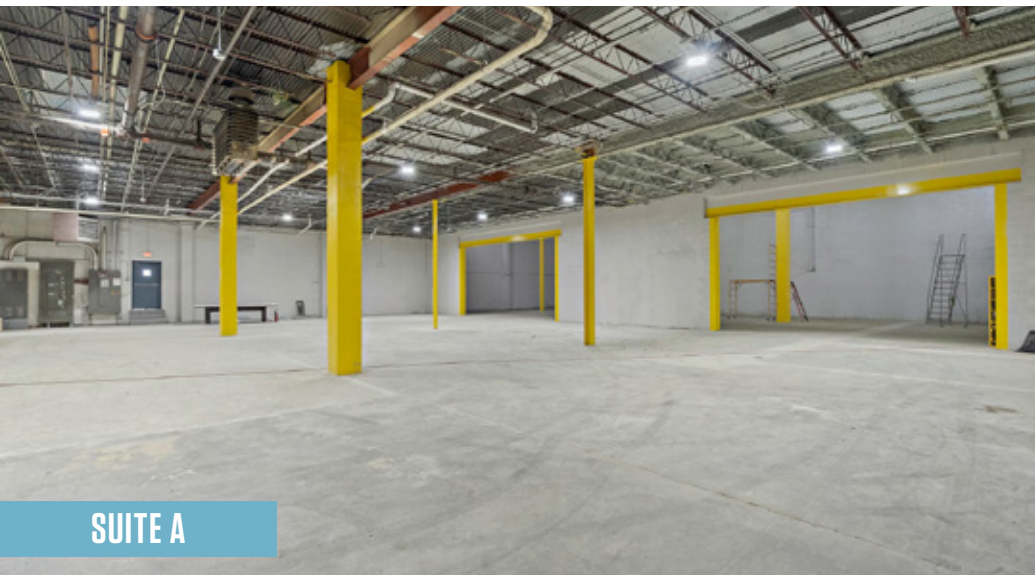
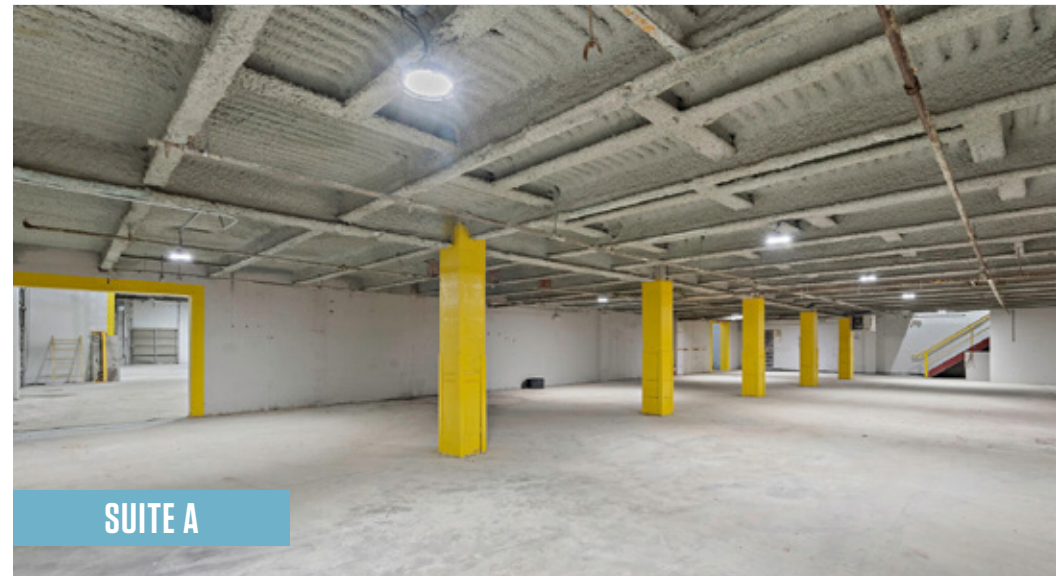
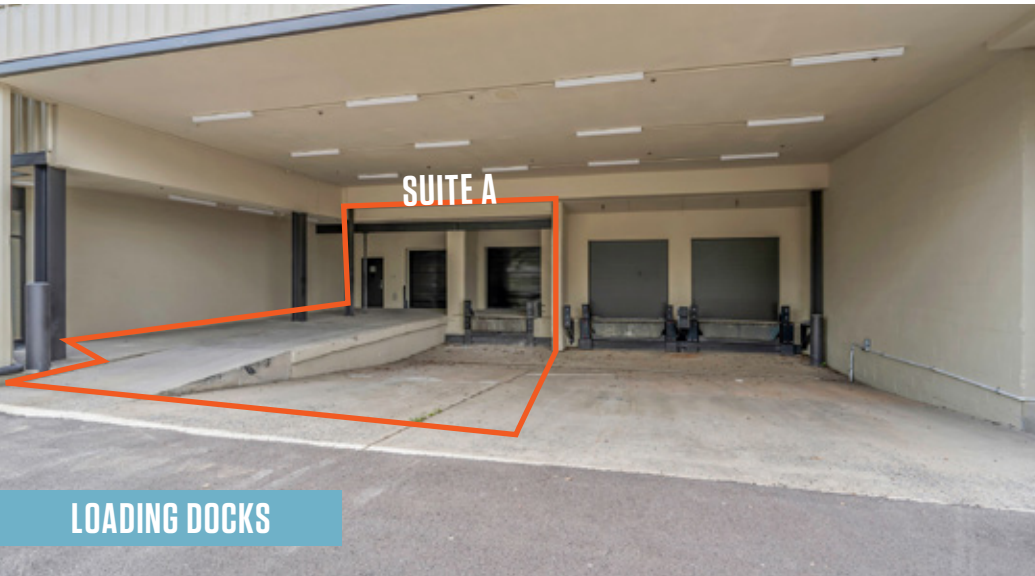
12435 Park Potomac Ave, Suite 250
Rockville MD, 20854
klnb.com

klnb

2355 LEWIS AVE

Rockville, MD, 20851
Montgomery County

PHOTOS



Lucas Glaeser
lglaeser@klnb.com
301-265-5614

Kenneth Fellows
kfellows@klnb.com
301-222-0210

12435 Park Potomac Ave, Suite 250
Rockville MD, 20854
klnb.com

klnb

2355 LEWIS AVE

Rockville, MD, 20851
Montgomery County

PHOTOS



Lucas Glaeser
lglaeser@klnb.com
301-265-5614

Kenneth Fellows
kfellows@klnb.com
301-222-0210

12435 Park Potomac Ave, Suite 250
Rockville MD, 20854
klnb.com

klnb

2355 LEWIS AVE

Rockville, MD, 20851

Montgomery County

[CLICK TO VIEW PROPERTY WEBSITE](#)

For More Information, Please Contact:

Lucas Glaeser
lglaeser@klnb.com
301-265-5614

Kenneth Fellows
kfellows@klnb.com
301-222-0210



While we have no reason to doubt the accuracy of any of the information supplied, we cannot, and do not, guarantee its accuracy. All information should be independently verified prior to a purchase or lease of the property. We are not responsible for errors, omissions, misuse, or misinterpretation of information contained herein and make no warranty of any kind, express or implied, with respect to the property or any other matters.

12435 Park Potomac Ave, Suite 250
Rockville MD, 20854
klnb.com

