

403 PULASKI HWY

Joppatowne, MD 21085
Harford County



**ZONED
B3**

LEASED BY:

NAI klnb

NEARBY RETAILERS

FCI DENTAL CARE
FAMILY • COSMETIC • IMPLANT

snap fitness 24/7

SHEETZ

DOLLAR GENERAL

*Quality Time
Detailing*

**SMITH
INDUSTRIES**

**CALIBER
COLLISION**

LAND FOR SALE

- This is 2.33 acres in total
- 1,900 sf house/ office on site
- Asking price is \$1,400,000
- Road Frontage

Ben Brooks
bbrooks@klnb.com
443-632-2048

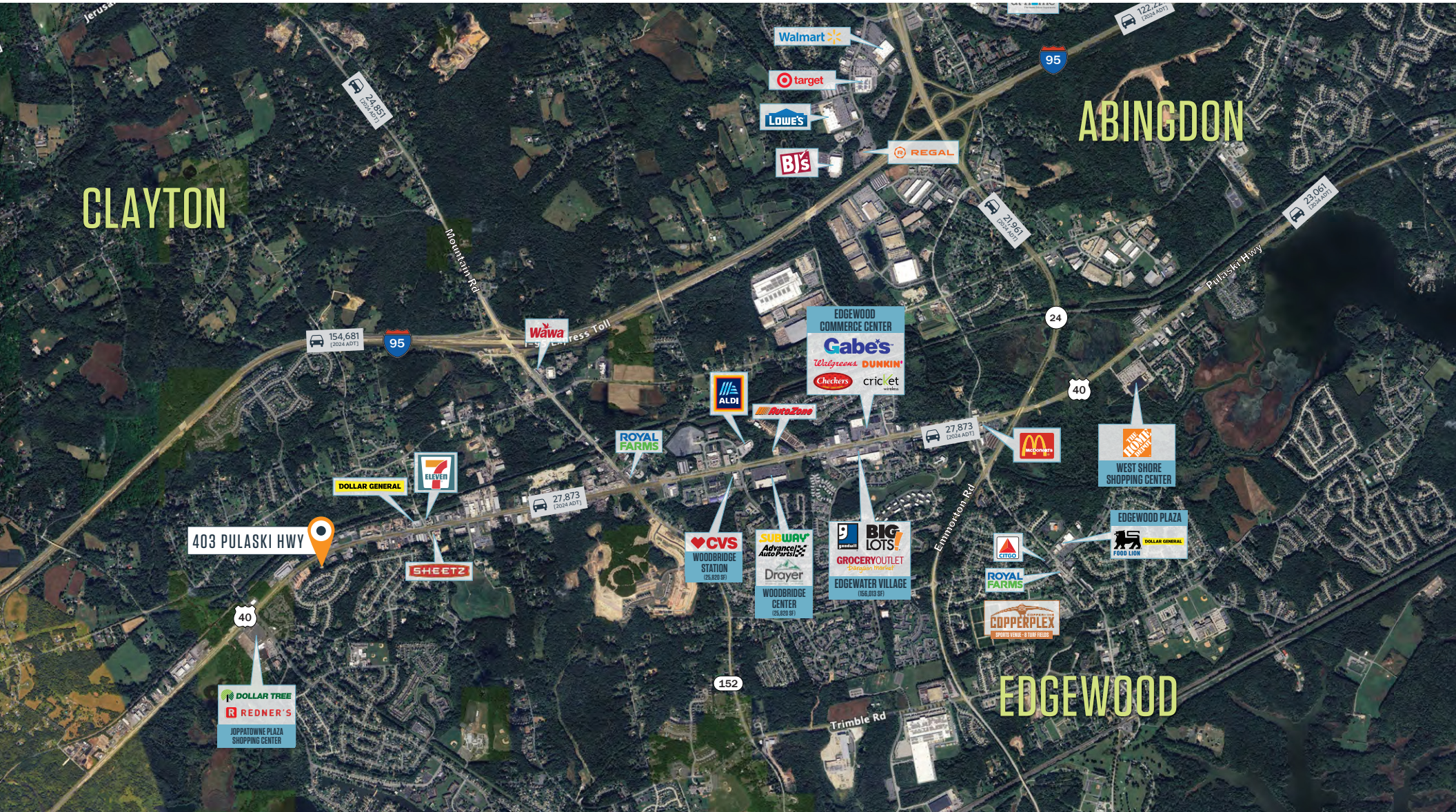
Chris Wright
cwright@klnb.com
443-914-2600

100 West Road, Suite 505, Towson, MD 21204
klnb.com

403 PULASKI HWY

Joppatowne, MD 21085
Harford County

MARKET AERIAL



Ben Brooks
bbrooks@klnb.com
443-632-2048

Chris Wright
cwright@klnb.com
443-914-2600

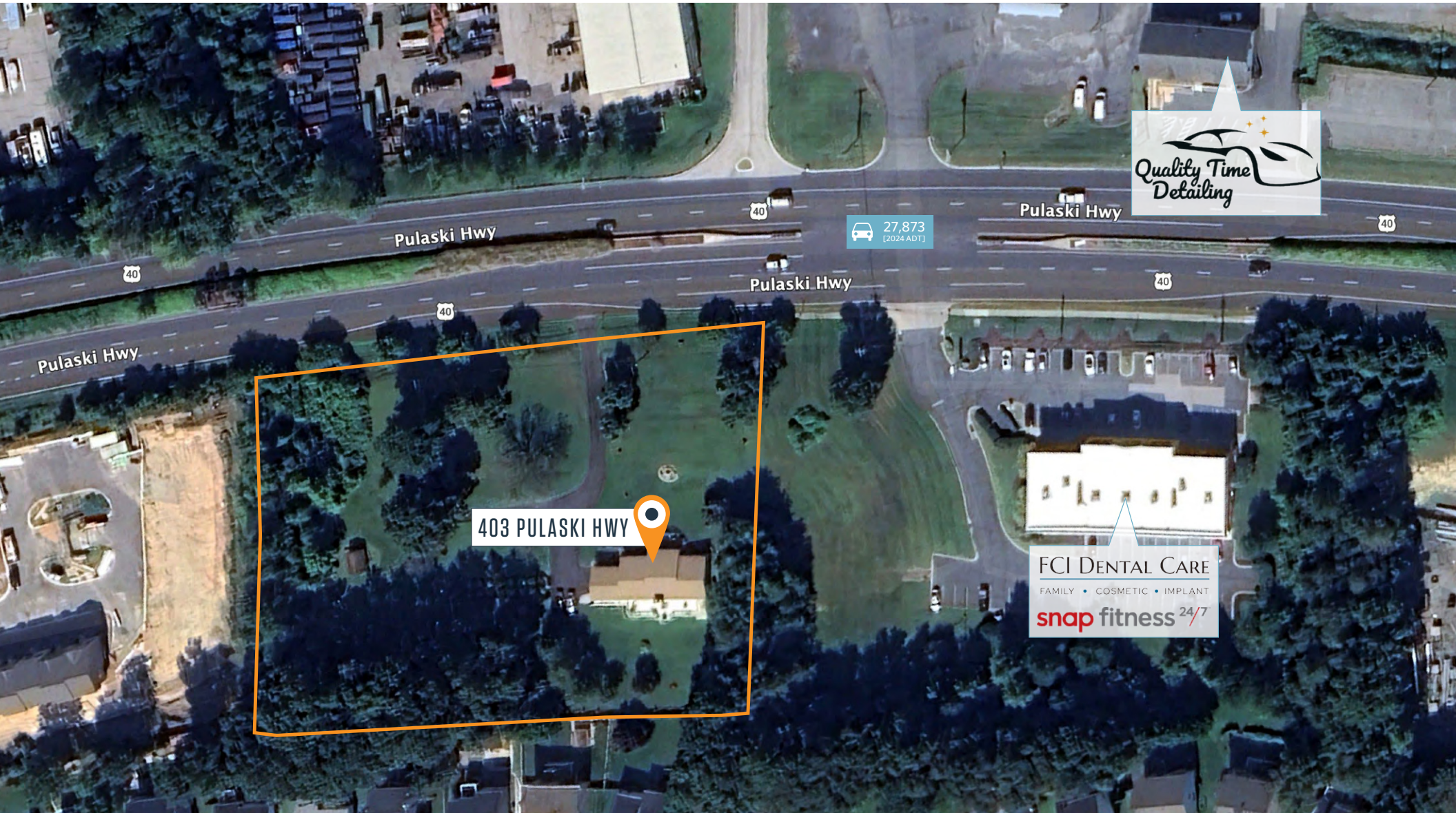
100 West Road, Suite 505
Towson, MD 21204
klnb.com



403 PULASKI HWY

Joppatowne, MD 21085
Harford County

CLOSE-UP AERIAL



Ben Brooks
bbrooks@klnb.com
443-632-2048

Chris Wright
cwright@klnb.com
443-914-2600

100 West Road, Suite 505
Towson, MD 21204
klnb.com



403 PULASKI HWY

Joppatowne, MD 21085
Harford County

PHOTOS



Ben Brooks
bbrooks@klnb.com
443-632-2048

Chris Wright
cwright@klnb.com
443-914-2600

100 West Road, Suite 505
Towson, MD 21204
klnb.com



403 PULASKI HWY

Joppatowne, MD 21085

Harford County

[CLICK TO VIEW PROPERTY WEBSITE](#)

For More Information, Please Contact:

Ben Brooks

bbrooks@klnb.com

443-632-2048

Chris Wright

cwright@klnb.com

443-914-2600



While we have no reason to doubt the accuracy of any of the information supplied, we cannot, and do not, guarantee its accuracy. All information should be independently verified prior to a purchase or lease of the property. We are not responsible for errors, omissions, misuse, or misinterpretation of information contained herein and make no warranty of any kind, express or implied, with respect to the property or any other matters.

100 West Road, Suite 505
Towson, MD 21204
klnb.com

