

SUITES READY FOR IMMEDIATE OCCUPANCY



FLEX/INDUSTRIAL SPACE AVAILABILITY

5702 General Washington Dr

- Suite F:
 - 1,475 SF
 - Open Warehouse With Office
 - One (1) Drive In Door

5706 General Washington Dr (Up To 5,260 Contiguous SF)

- Suite E:
 - 2,630 SF
 - Open Warehouse
 - One (1) Drive In Door
- Suite F:
 - 2,630 SF
 - 2/3 Finished Office, 1/3 Warehouse
 - One (1) Drive In Door
- Suite K:
 - 2,620 SF
 - 1/3 office, 2/3 warehouse
 - One (1) Interior Dock Door
 - Fully Conditioned
- Suite H:
 - 2,630 SF
 - 1/3 Office, 2/3 Warehouse
 - One (1) Drive In Door

PROPERTY HIGHLIGHTS

- Base Rental Rate – Contact for Additional Information
- Estimated OPEX: \$4.19 PSF
- Easy Access to I-395 & I-495
- Signage Visibility on I-395 or General Washington Drive
- FIOS, Cox & Xfinity internet available

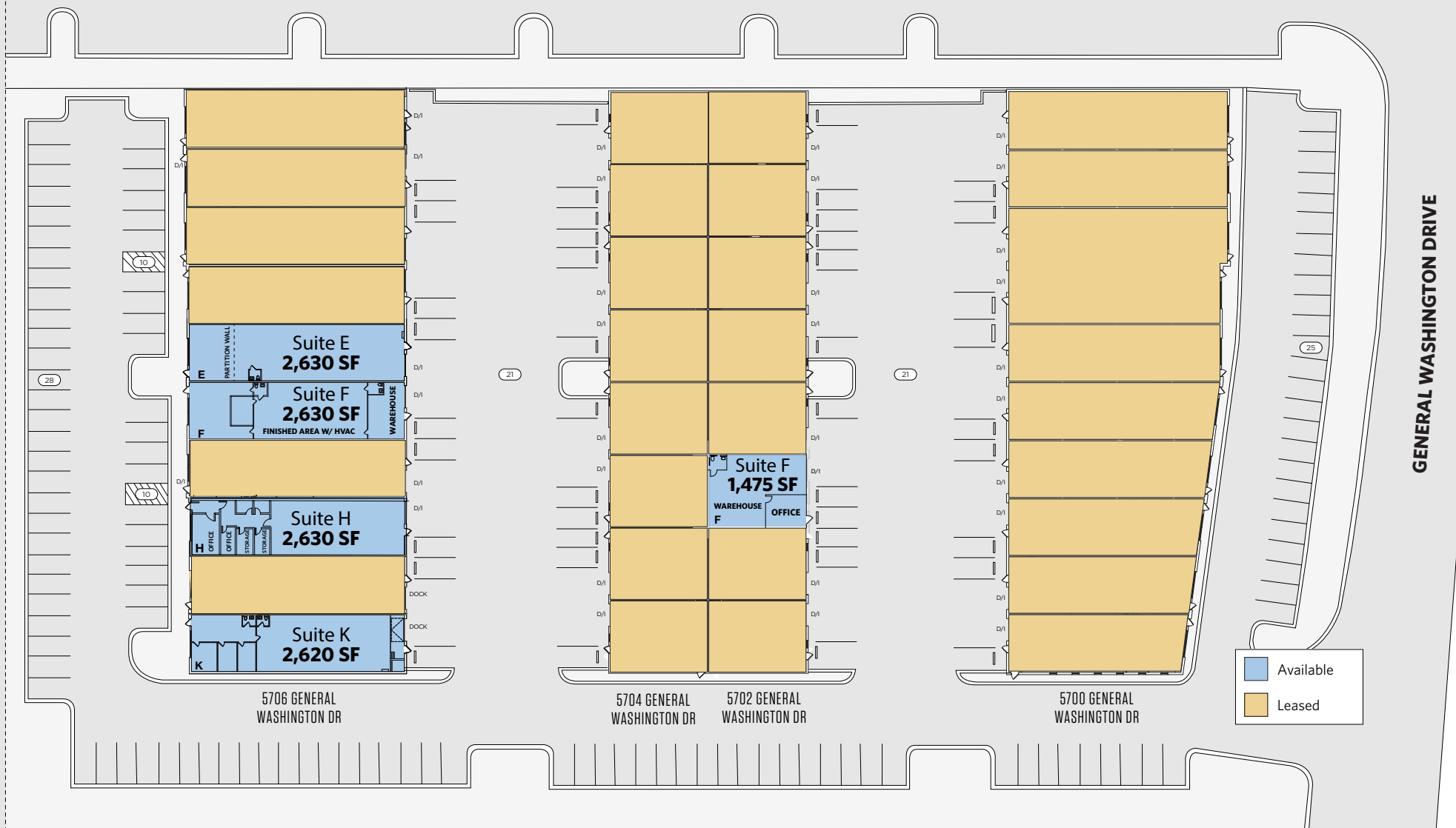
SITE PLAN

BREN MAR CENTER

5700 - 5706 GENERAL WASHINGTON DRIVE, ALEXANDRIA, VA 22314, FAIRFAX COUNTY



HENRY G SHIRLEY HIGHWAY



RYAN MOODY

rmoody@klnb.com | 703-268-2739

KEENAN WOOFER

kwoofter@klnb.com | 703-268-2744



5706 General Washington Dr Suite K | 2,620 SF



RYAN MOODY

rmoody@klnb.com | 703-268-2739

KEENAN WOOFER

kwoofter@klnb.com | 703-268-2744

PHOTOS

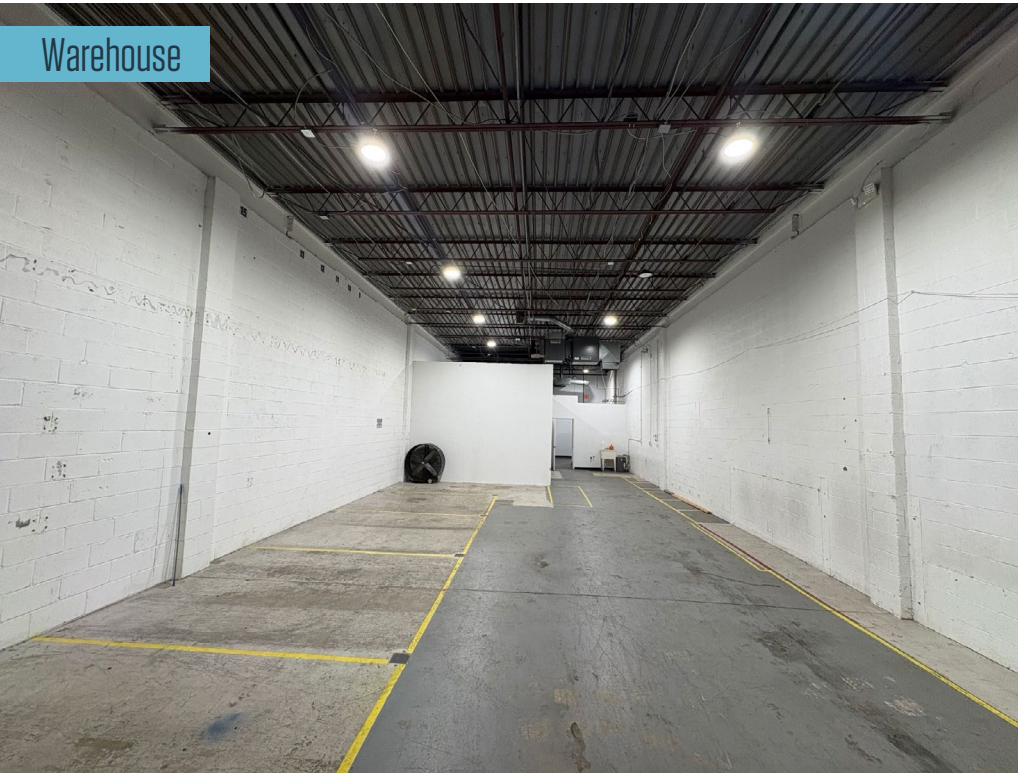
BREN MAR CENTER

5700 - 5706 GENERAL WASHINGTON DRIVE, ALEXANDRIA, VA 22314, FAIRFAX COUNTY

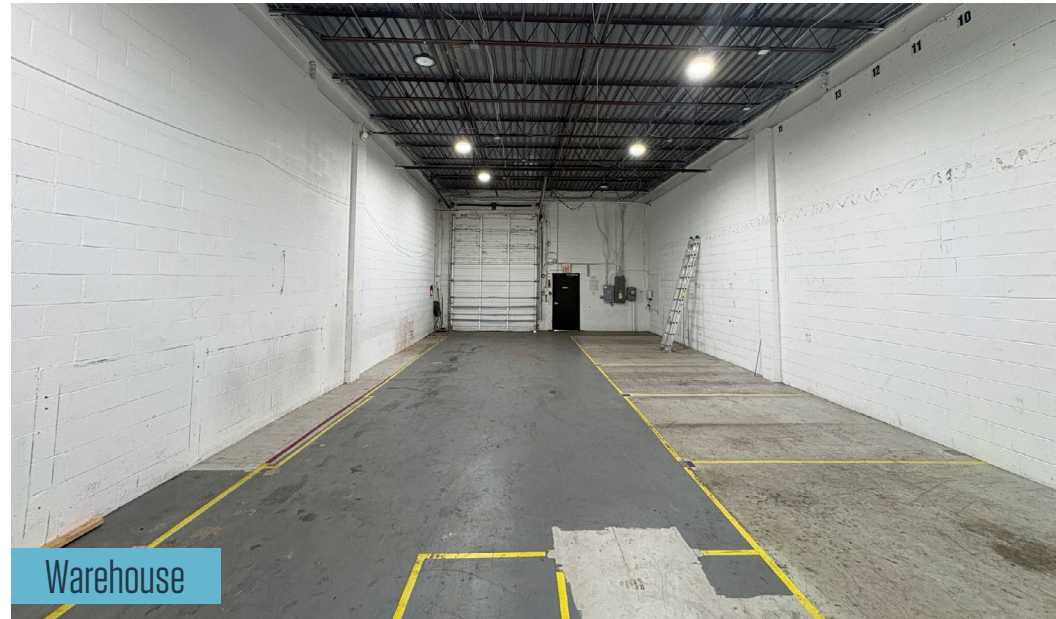
5706 General Washington Dr
Suite H | 2,630 SF



Office



Warehouse



Warehouse

RYAN MOODY

rmoody@klnb.com | 703-268-2739

KEENAN WOOFER

kwoofter@klnb.com | 703-268-2744



5706 General Washington Dr Suite E | 2,630 SF

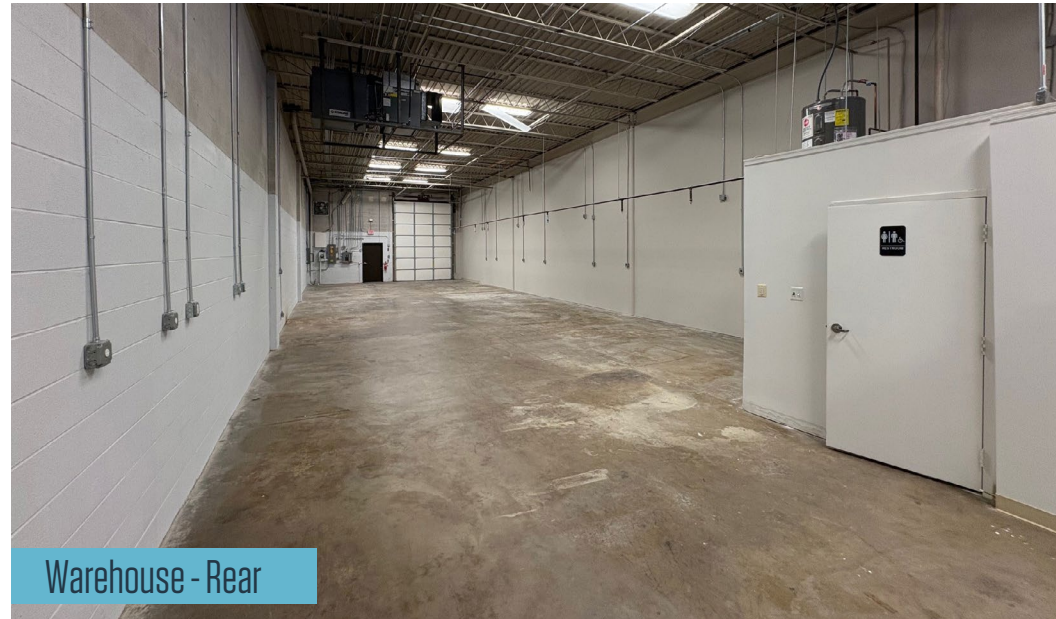
Front Door



Warehouse - Front



Warehouse - Rear



RYAN MOODY

rmoody@klnb.com | 703-268-2739

KEENAN WOOFER

kwoofer@klnb.com | 703-268-2744

5706 General Washington Dr
Suite F | 2,630 SF



RYAN MOODY

rmoody@klnb.com | 703-268-2739

KEENAN WOOFER

kwoofter@klnb.com | 703-268-2744

AERIAL

BREN MAR CENTER

5700 - 5706 GENERAL WASHINGTON DRIVE, ALEXANDRIA, VA 22314, FAIRFAX COUNTY

Alexandria
Fairfax County | Virginia

NAIklnb

- Google Earth Pro -
2018 Aerial Photograph
While we have no reason to doubt the accuracy of
any of the information supplied, we cannot,
and do not, guarantee its accuracy.



ALEXANDRIA

RYAN MOODY

rmoody@klnb.com | 703-268-2739

KEENAN WOOFER

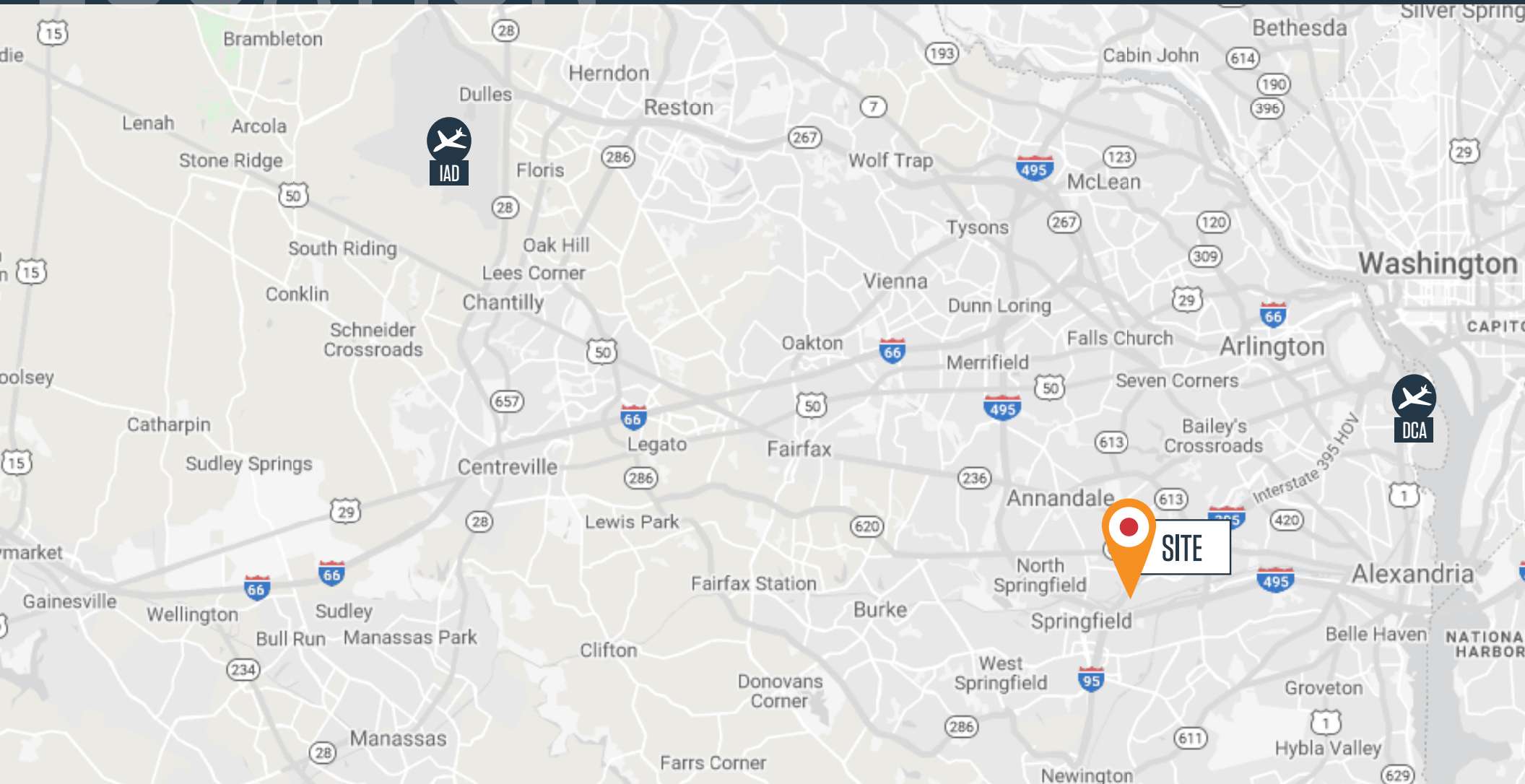
kwoofer@klnb.com | 703-268-2744

NAIklnb

LOCATION

BREN MAR CENTER

5700 - 5706 GENERAL WASHINGTON DRIVE, ALEXANDRIA, VA 22314, FAIRFAX COUNTY



STRATEGIC LOCATION

• I-395..... 1.9 Miles	• Old Town Alexandria..... 10.6 Miles	• Ronald Reagan National Airport 10 Miles
• I-495 4.6 Miles	• Dulles International Airport..... 27.1 Miles	• Washington, DC..... 12.3 Miles

RYAN MOODY

rmoody@klnb.com | 703-268-2739

KEENAN WOOFER

kwoofter@klnb.com | 703-268-2744



FOR MORE INFORMATION, PLEASE CONTACT:

RYAN MOODY

rmood@klnb.com | 703-268-2739

KEENAN WOOFER

kwoofte@klnb.com | 703-268-2744

8065 Leesburg Pike, Suite 700, Tysons, VA 22182

.....

klnb.com



CLICK TO VIEW PROPERTY WEBSITE

While we have no reason to doubt the accuracy of any of the information supplied, we cannot, and do not, guarantee its accuracy. All information should be independently verified prior to a purchase or lease of the property. We are not responsible for errors, omissions, misuse, or misinterpretation of information contained herein and make no warranty of any kind, express or implied, with respect to the property or any other matters.