

TECH 29

2150 Industrial Pkwy, Silver Spring, MD 20904
Montgomery County

5,500 SF AVAILABLE FOR LEASE



PROPERTY INFORMATION

- Building Signage Available
- 16.5" Ceiling Height
- 1 Drive-In Bay
- End-cap Unit
- 2 Miles to Rt 200
- 4.7 Miles to I-95
- 3.7 Miles to 495
- Near White Oak Town Center, Westech Village Corner, & Orchard Center

LEASED BY:

klnb

Kenneth Fellows
301-222-0210
kfellows@klnb.com

Robert E. Pugh
301-222-0211
rpugh@klnb.com

Keiry Martinez
703-334-5629
kmartinez@klnb.com

12435 Park Potomac Ave, Suite 250
Rockville, MD 20854
klnb.com

TECH 29

2150 Industrial Pkwy, Silver Spring, MD 20904
Montgomery County

AREA OVERVIEW



Kenneth Fellows
kfellows@klnb.com
301-222-0210

Robert Pugh
rpugh@klnb.com
301-222-0211

Keiry Martinez
kmartinez@klnb.com
703-334-5629

12435 Park Potomac Ave, Suite 250
Rockville MD, 20854
klnb.com



TECH 29

2150 Industrial Pkwy, Silver Spring, MD 20904
Montgomery County

MARKET AERIAL



Kenneth Fellows
kfellows@klnb.com
301-222-0210

Robert Pugh
rpugh@klnb.com
301-222-0211

Keiry Martinez
kmartinez@klnb.com
703-334-5629

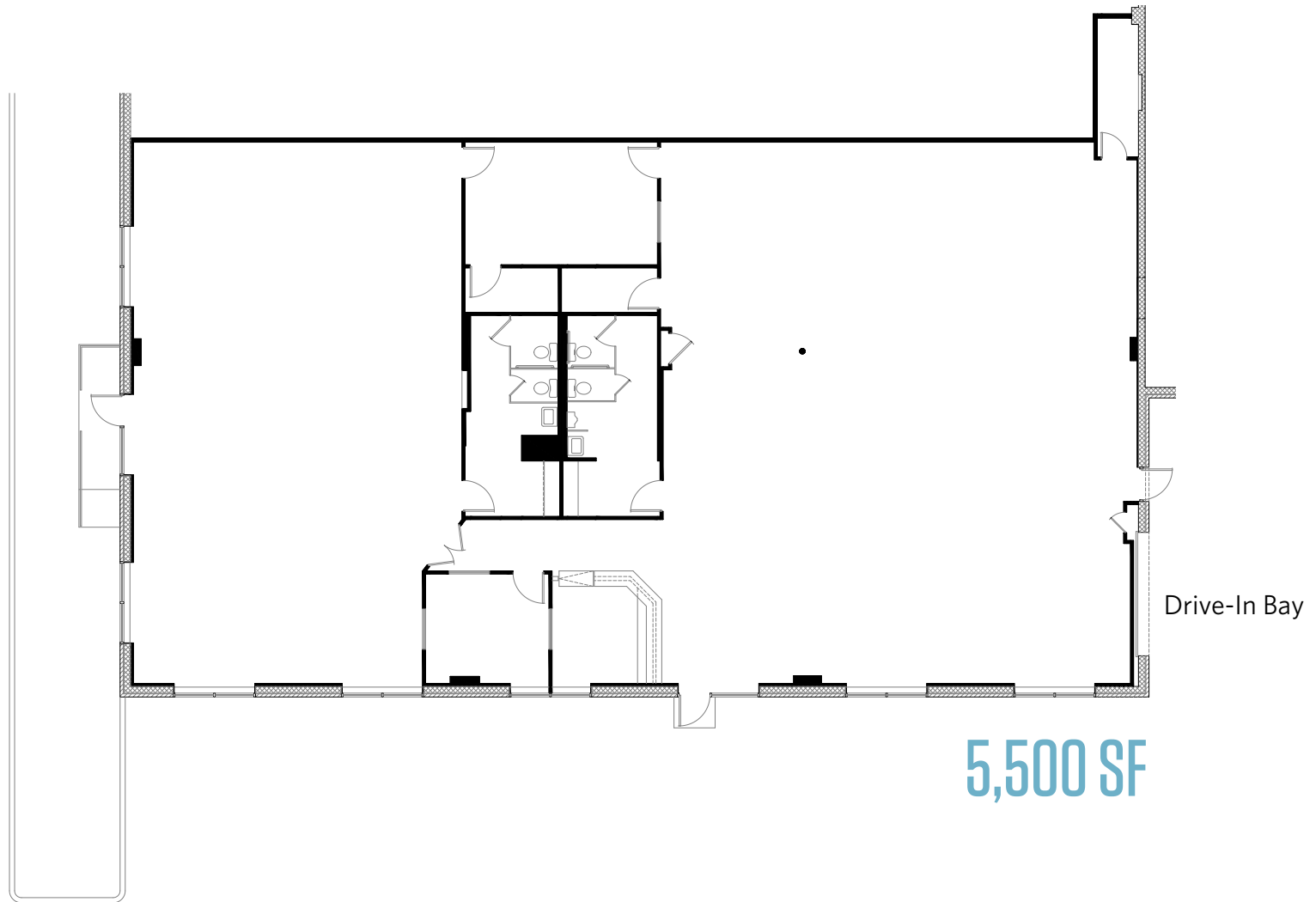
12435 Park Potomac Ave, Suite 250
Rockville MD, 20854
klnb.com



TECH 29

2150 Industrial Pkwy, Silver Spring, MD 20904
Montgomery County

FLOOR PLAN



Kenneth Fellows
kfellows@klnb.com
301-222-0210

Robert Pugh
rpugh@klnb.com
301-222-0211

Keiry Martinez
kmartinez@klnb.com
703-334-5629

12435 Park Potomac Ave, Suite 250
Rockville MD, 20854
klnb.com

klnb

TECH 29

2150 Industrial Pkwy, Silver Spring, MD 20904

Montgomery County

[CLICK TO VIEW PROPERTY WEBSITE](#)

For More Information, Please Contact:

Kenneth Fellows
kfellows@klnb.com
301-222-0210

Robert Pugh
rpugh@klnb.com
301-222-0211

Keiry Martinez
kmartinez@klnb.com
703-334-5629



While we have no reason to doubt the accuracy of any of the information supplied, we cannot, and do not, guarantee its accuracy. All information should be independently verified prior to a purchase or lease of the property. We are not responsible for errors, omissions, misuse, or misinterpretation of information contained herein and make no warranty of any kind, express or implied, with respect to the property or any other matters.

12435 Park Potomac Ave, Suite 250
Rockville MD, 20854
klnb.com

