

OFFICE/MEDICAL CONDO

8180 Lark Brown Road, Suite 302
Elkridge, Maryland 21075 | Howard County



FOR SALE/LEASE

NEARBY AMENITIES

STANFORD
GRILL



Olive
Garden

OLD LINE

ROYAL TAJ



PROPERTY INFORMATION

- Suite 302: 1,550 square feet available
- Lease Rate: \$20.00 psf + electric & cleaning
- Sale Rate: \$220 per square foot
- Parking: 30 surface parking spaces
- Year Built: 2004
- Stories: Three
- Ceiling Height: 10'
- Year Built: 2004

Abby Glassberg
aglassberg@klnb.com
443-574-1433

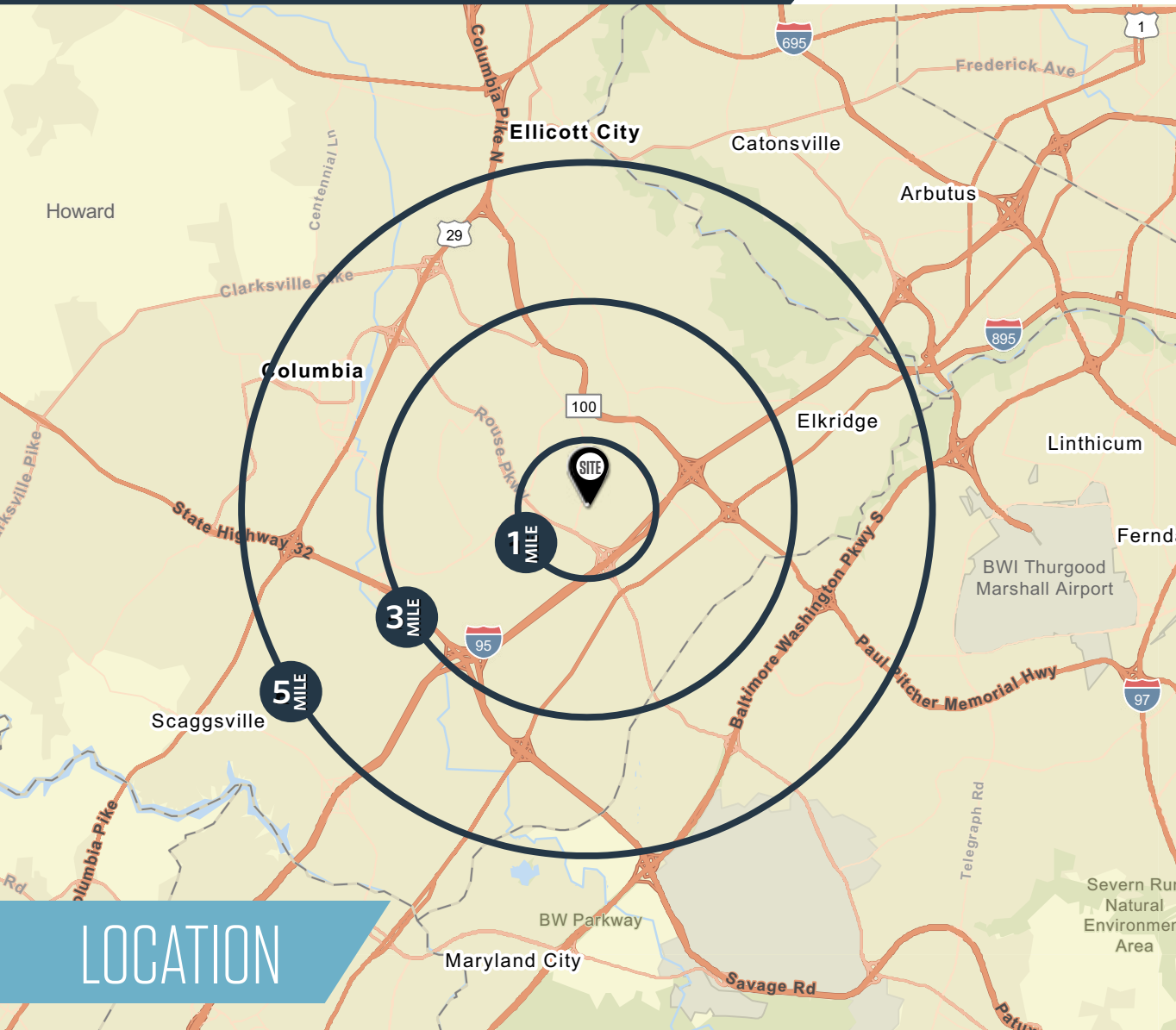
Aaron Carroll
acarroll@klnb.com
202-652-2333

9881 Broken Land Pkwy, Suite 300
Columbia, MD 21046
klnb.com

NAI klnb

OFFICE/MEDICAL CONDO

8180 Lark Brown Road, Suite 301
Elkridge, Maryland 21075 | Howard County



3 MILE DEMOS



POPULATION
85,613



HOUSEHOLDS
30,981



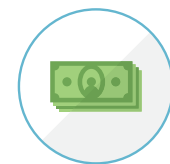
MEDIAN HH INCOME
\$135,863



AVG HOUSEHOLD SIZE
2.71



MEDIAN AGE
37.2



DISPOSABLE INCOME
\$104,271

LOCATION

Abby Glassberg
aglassberg@klnb.com
443-574-1433

Aaron Carroll
acarroll@klnb.com
202-652-2333

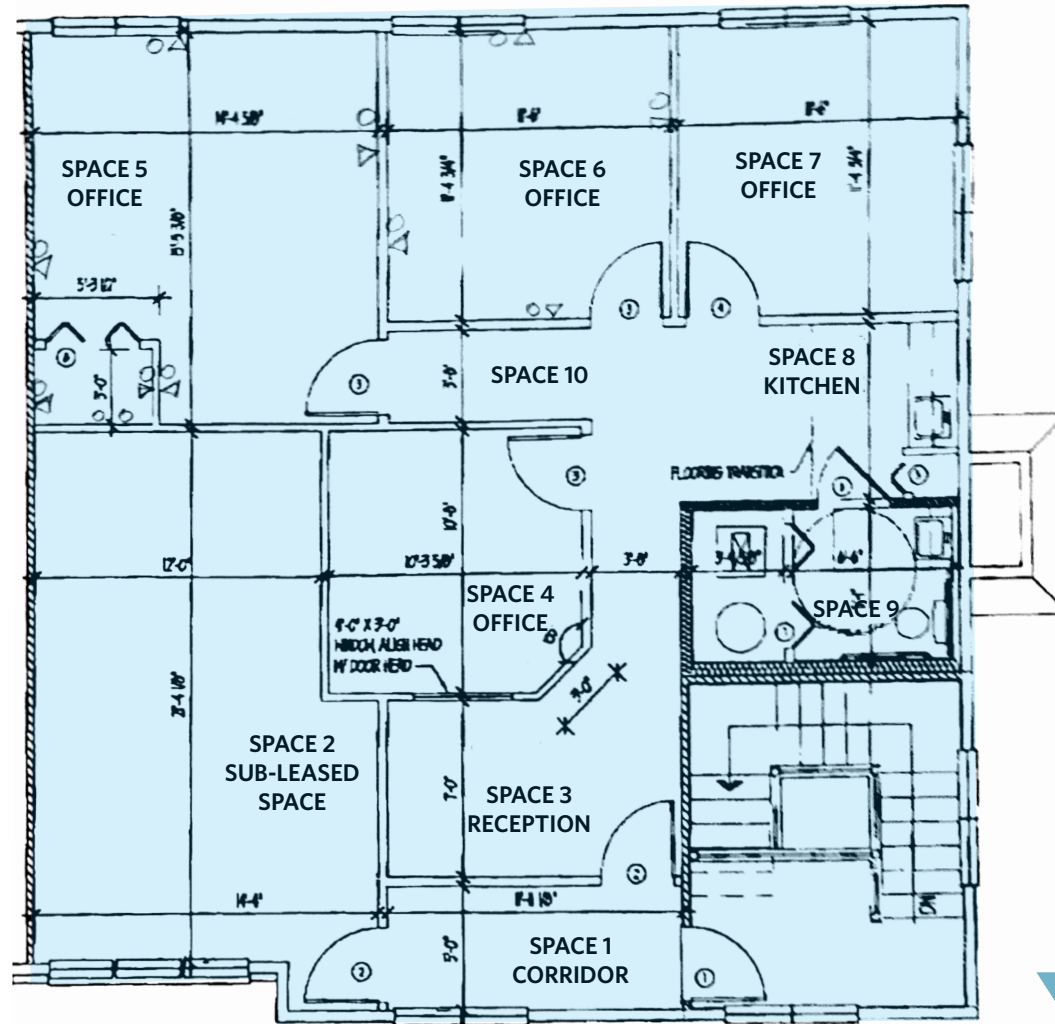
9881 Broken Land Pkwy, Suite 300
Columbia, MD 21046
klnb.com



OFFICE/MEDICAL CONDO

8180 Lark Brown Road, Suite 301
Elkridge, Maryland 21075 | Howard County

SUITE 301
1,550 SF



FLOOR PLAN

Abby Glassberg
aglassberg@klnb.com
443-574-1433

Aaron Carroll
acarroll@klnb.com
202-652-2333

9881 Broken Land Pkwy, Suite 300
Columbia, MD 21046
klnb.com

NAklnb

OFFICE/MEDICAL CONDO

8180 Lark Brown Road, Suite 301
Elkridge, Maryland 21075 | Howard County



PHOTOS

Abby Glassberg
aglassberg@klnb.com
443-574-1433

Aaron Carroll
acarroll@klnb.com
202-652-2333

9881 Broken Land Pkwy, Suite 300
Columbia, MD 21046
klnb.com

NAIklnb

OFFICE/MEDICAL CONDO

8180 Lark Brown Road, Suite 301
Elkridge, Maryland 21075 | Howard County



MARKET AERIAL

Abby Glassberg
aglassberg@klnb.com
443-574-1433

Aaron Carroll
acarroll@klnb.com
202-652-2333

9881 Broken Land Pkwy, Suite 300
Columbia, MD 21046
klnb.com



OFFICE/MEDICAL CONDO

8180 Lark Brown Road, Suite 301
Elkridge, Maryland 21075 | Howard County

CLICK TO VIEW PROPERTY WEBSITE

For More Information, Please Contact:

Abby Glassberg

aglassberg@klnb.com

443-574-1433

Aaron Carroll

acarroll@klnb.com

202-652-2333

9881 Broken Land Parkway, Suite 300
Columbia, Maryland 21046

klnb.com



[instagram.com/klnbcre](https://www.instagram.com/klnbcre)



[linkedin.com/company/klnb](https://www.linkedin.com/company/klnb)



[facebook.com/KLNBCRE](https://www.facebook.com/KLNBCRE)

While we have no reason to doubt the accuracy of any of the information supplied, we cannot, and do not, guarantee its accuracy. All information should be independently verified prior to a purchase or lease of the property. We are not responsible for errors, omissions, misuse, or misinterpretation of information contained herein and make no warranty of any kind, express or implied, with respect to the property or any other matters.

NAI klnb