



AVAILABILITY:

Outdoor Storage Available

- \$4.00/SF
- 25,912 SF Available OR
- 42 parking spaces @ \$200/month per space

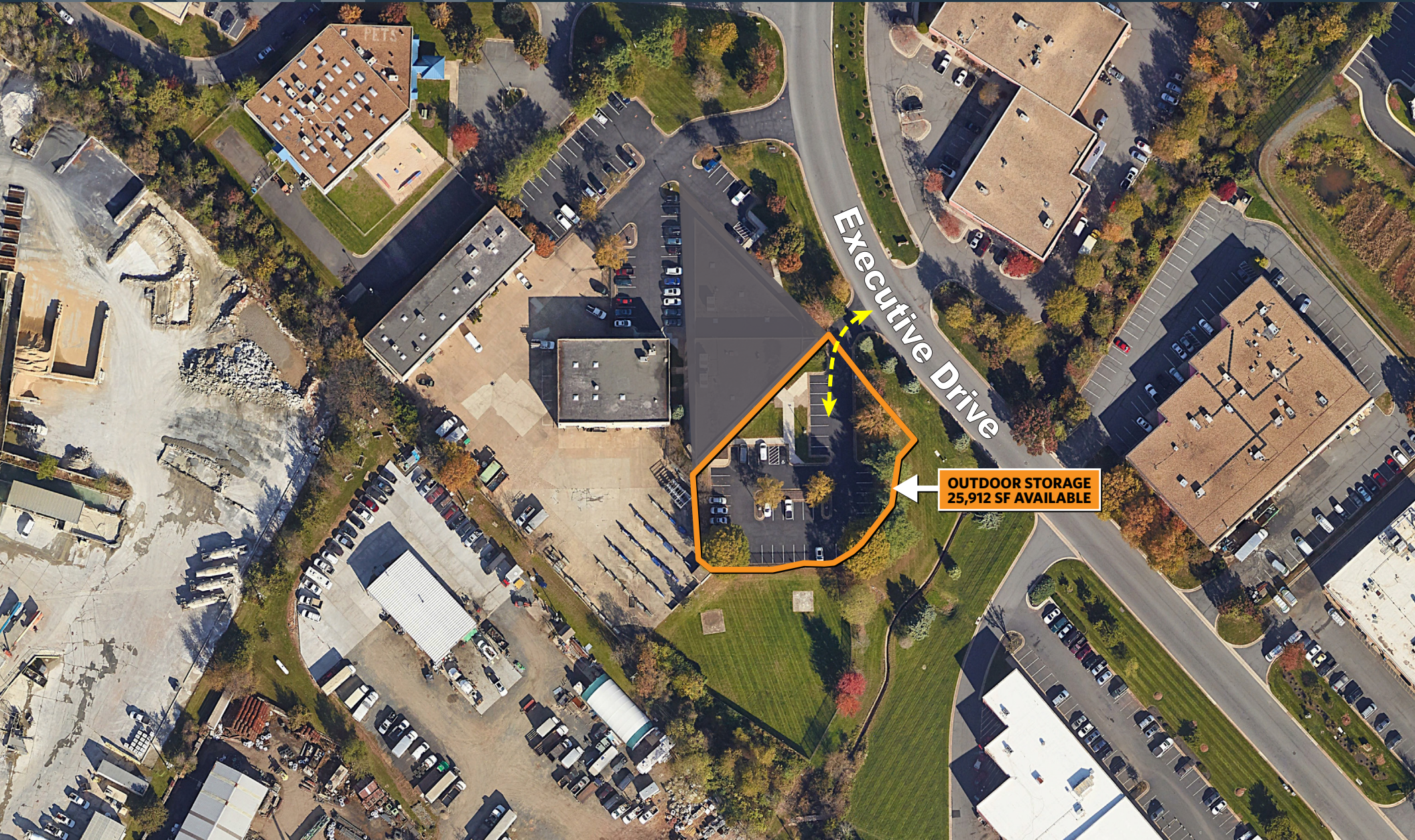
PROPERTY FEATURES:

- Less than 1 mile to Dulles Airport
- Ready to move-in
- PD-GI zoning
- 0.4 miles from 606
- 1.7 miles from Rt. 28
- 1.3 miles from Dulles Toll Rd (VA-267)

CLOSE UP

105 EXECUTIVE DRIVE

105 EXECUTIVE DRIVE, STERLING, VIRGINIA 20166



**OUTDOOR STORAGE
25,912 SF AVAILABLE**

RYAN GOELLER, CCIM
rgoeller@klnb.com | 703-268-2731

CHASE STEWART, CCIM
cstewart@klnb.com | 703-268-2732

JEFF TARAE
jtarae@klnb.com | 703-268-2741



FOR MORE INFORMATION, PLEASE CONTACT:

RYAN GOELLER, CCIM

rgoeller@klnb.com | 703-268-2731

CHASE STEWART, CCIM

cstewart@klnb.com | 703-268-2732

JEFF TARAE

jtarae@klnb.com | 703-268-2741

8065 Leesburg Pike, Suite 700, Tysons, VA 22182

klnb.com



[instagram.com/klnbcre](https://www.instagram.com/klnbcre)



[linkedin.com/company/klnb](https://www.linkedin.com/company/klnb)



[facebook.com/klnbcre](https://www.facebook.com/klnbcre)

CLICK TO VIEW PROPERTY WEBSITE