



FOR SUBLEASE

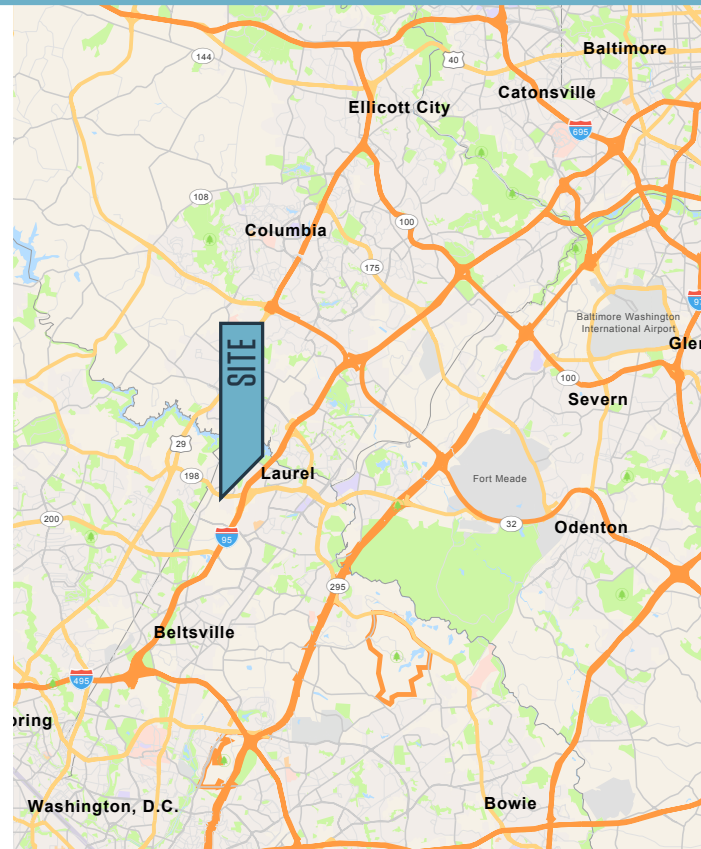
AVAILABLE SUITE:

- **2nd Floor, Suite 202:** 3,530 square feet

PROPERTY HIGHLIGHTS:

- **Availability:** Immediately
- **Rental Rate:** \$21.50 per square foot - Full Service
- **Parking:** Ample free surface parking
- **Furniture:** Included. All offices are fully furnished with quality office furniture including conference table and chairs.
- **Kitchen:** Shared
- **Sublease Expiration:** October 31, 2030 with renewal / extension option available
- **Access:** Minutes from I-95; easy access to Route 198, Route 29, and Route 1

NEARBY AMENITIES:



Abby Glassberg
aglassberg@klnb.com
443-574-1433

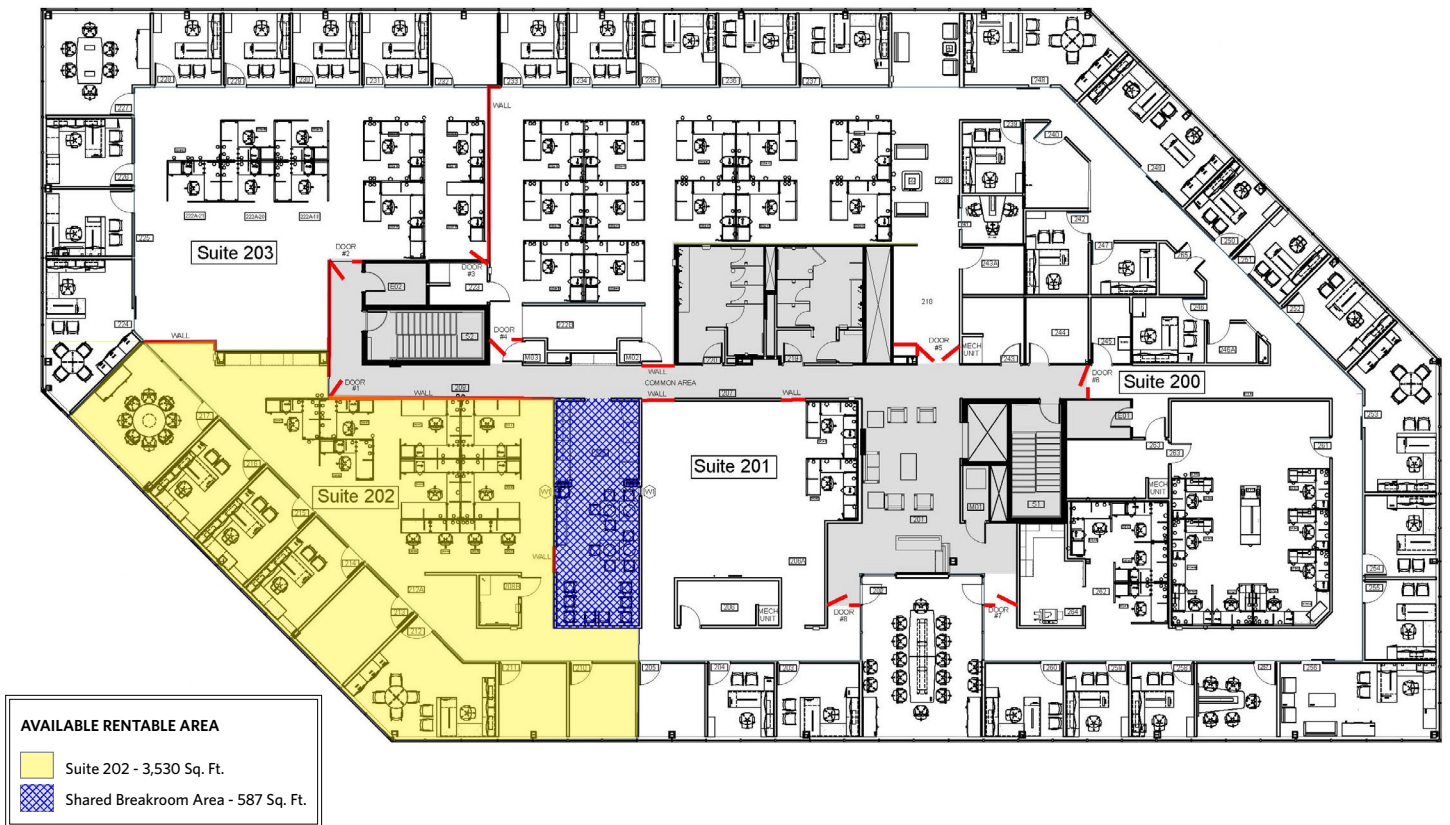
Chuck Breitenother
cbreitenother@klnb.com
443-574-1422

9881 Broken Land Parkway, Suite 300
Columbia, MD 21046
klnb.com

6100 CHEVY CHASE DRIVE

Laurel, MD 20707 | Prince George's County

SECOND FLOOR PLAN



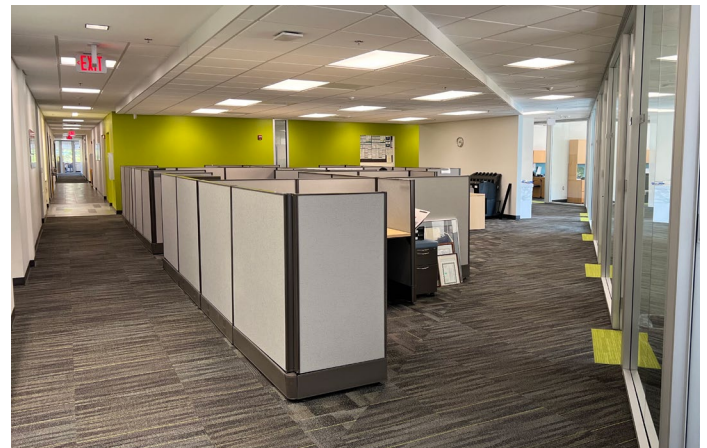
EXTERIOR PHOTOS



Abby Glassberg
aglassberg@klnb.com
443-574-1433

Chuck Breitenother
cbreitenother@klnb.com
443-574-1422

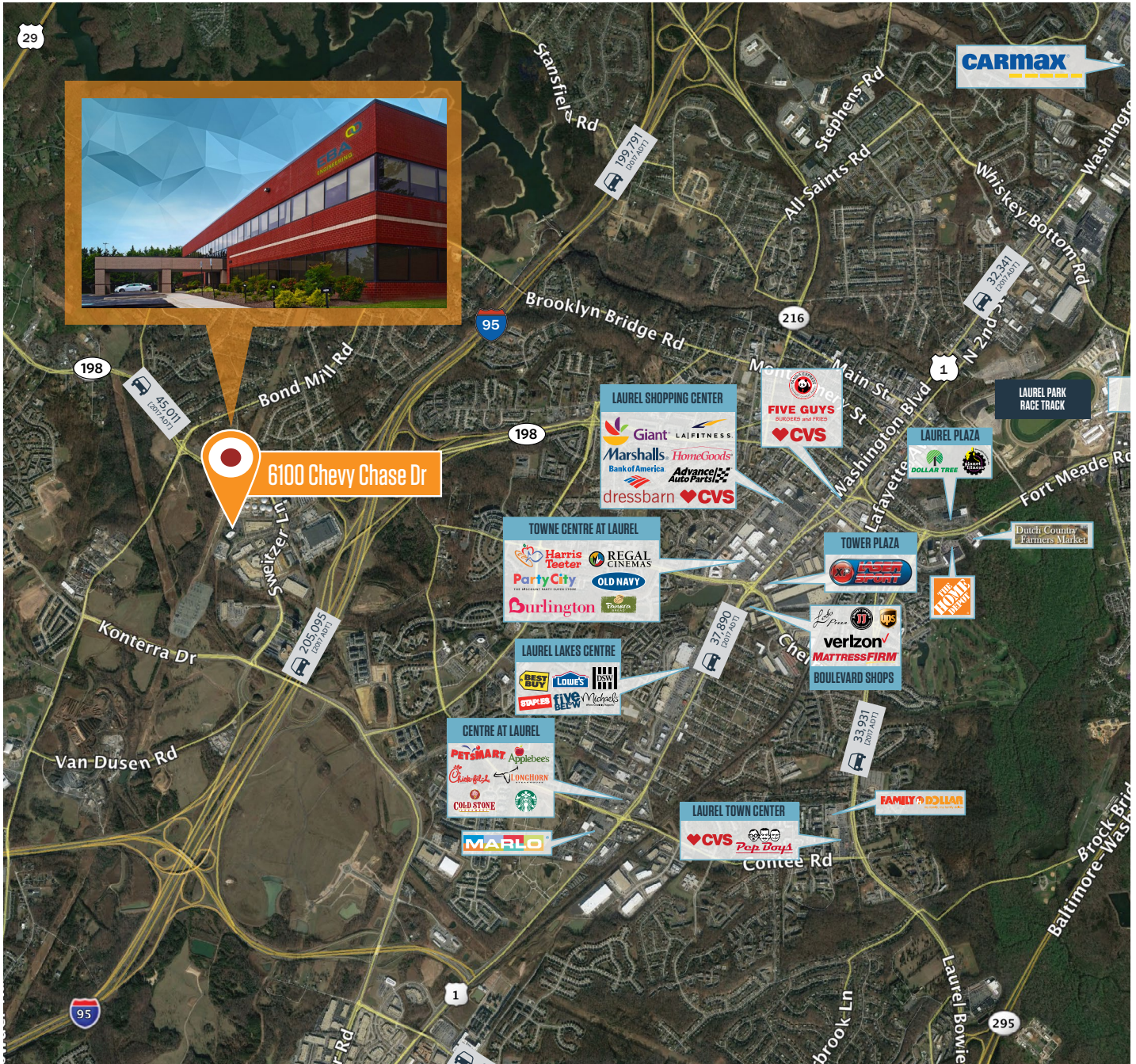
INTERIOR PHOTOS



6100 CHEVY CHASE DRIVE

Laurel, MD 20707 | Prince George's County

MARKET AERIAL



While we have no reason to doubt the accuracy of any of the information supplied, we cannot, and do not, guarantee its accuracy. All information should be independently verified prior to a purchase or lease of the property. We are not responsible for errors, omissions, misuse, or misinterpretation of information contained herein and make no warranty of any kind, express or implied, with respect to the property or any other matters.

Abby Glassberg
aglassberg@klnb.com
443-574-1433

Chuck Breitenother
cbreitenother@klnb.com
443-574-1422

9881 Broken Land Parkway, Suite 300
Columbia, MD 21046
klnb.com