



PARK SIZE
76,172 SF



CLOSE PROXIMITY
CAPITAL BELTWAY



ZONING
IH (Heavy, Industrial)



LOADING
DOCK & DRIVE-IN



PARKING
AMPLE

5806 - 5830 KIRBY ROAD
5840 - 5844 KIRBY ROAD
7609 - 7617 COMMERCE LANE

Clinton, Maryland 20735
Prince George's County

WAREHOUSE SPACE FOR LEASE

AARON CARROLL
acarroll@klnb.com
202-652-2333

9881 Broken Land Parkway, Suite 300 | Columbia, MD 21046

NEW OWNERSHIP / MANAGEMENT
PROPERTY IMPROVEMENTS UNDERWAY



AVAILABILITY



5806 - 5830 Kirby Road (37,398 SF)



5840 - 5844 Kirby Road (18,510 SF)



7609 - 7617 Commerce Lane (20,264 SF)

5806 - 5830 KIRBY ROAD

- 37,398 Square Feet
- Fully Occupied

5840 - 5844 KIRBY ROAD

- 18,510 Square Feet
- Fully Occupied

7609 - 7617 COMMERCE LANE

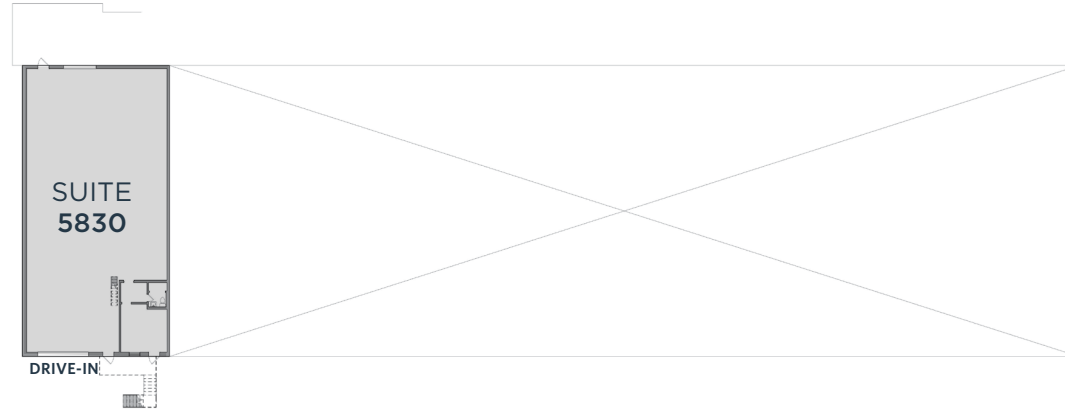
- 20,264 Square Feet
- 6,700 SF Available

NOTABLE HIGHLIGHTS

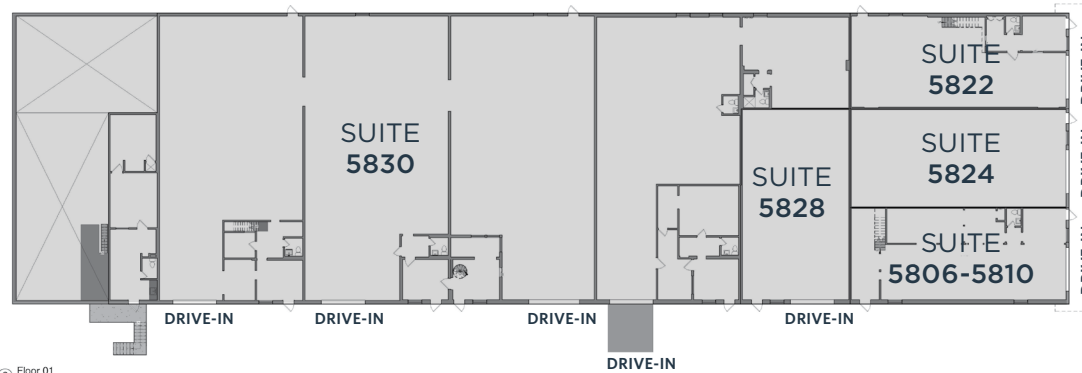
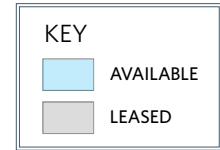
- Hard to find small bay industrial space
- Ample parking
- Close proximity to Capital Beltway
- LED lighting
- Oversized drive-in loading
- Heavy Industrial Zoning allows for a variety of uses. Auto-uses permitted.

FLOOR PLAN

5806 - 5830 Kirby Road



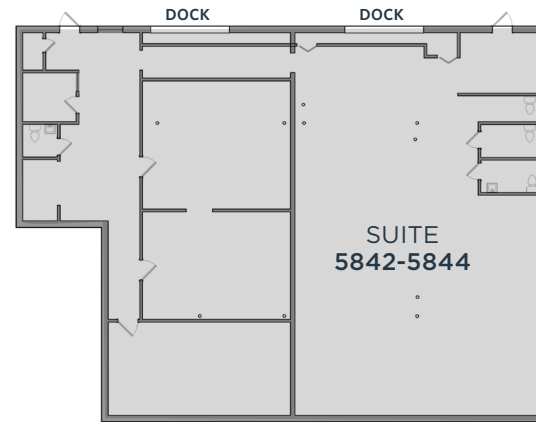
① Floor 01 Lower
1/16" = 1'-0"



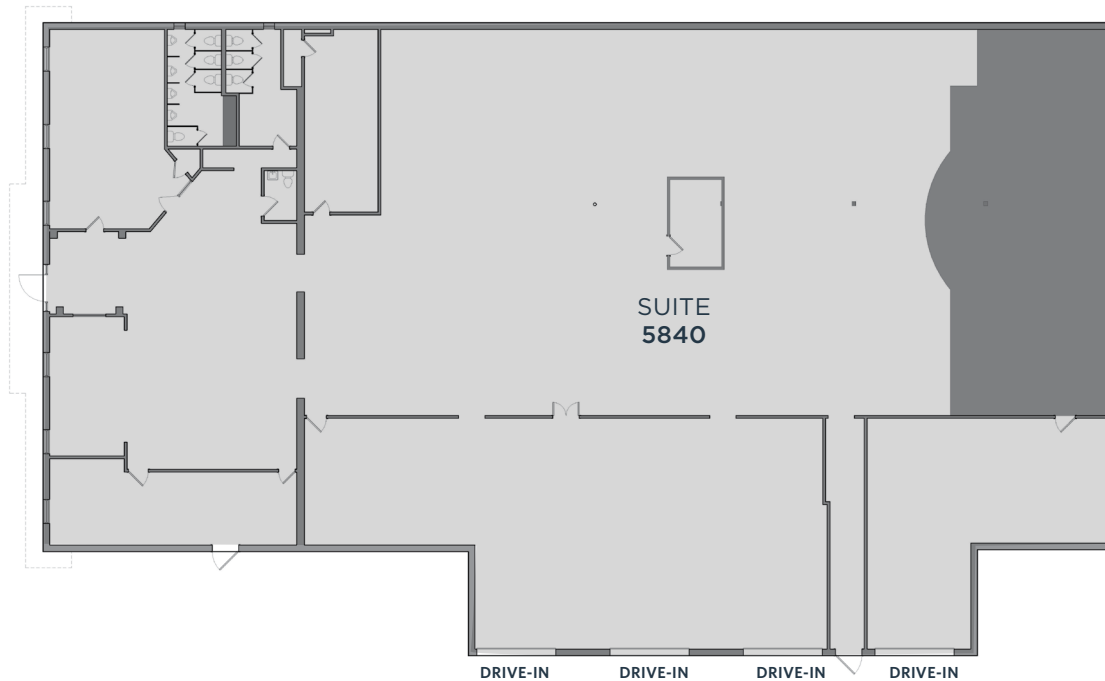
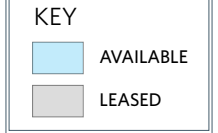
② Floor 01
1/16" = 1'-0"

FLOOR PLAN

5840 - 5844 Kirby Road



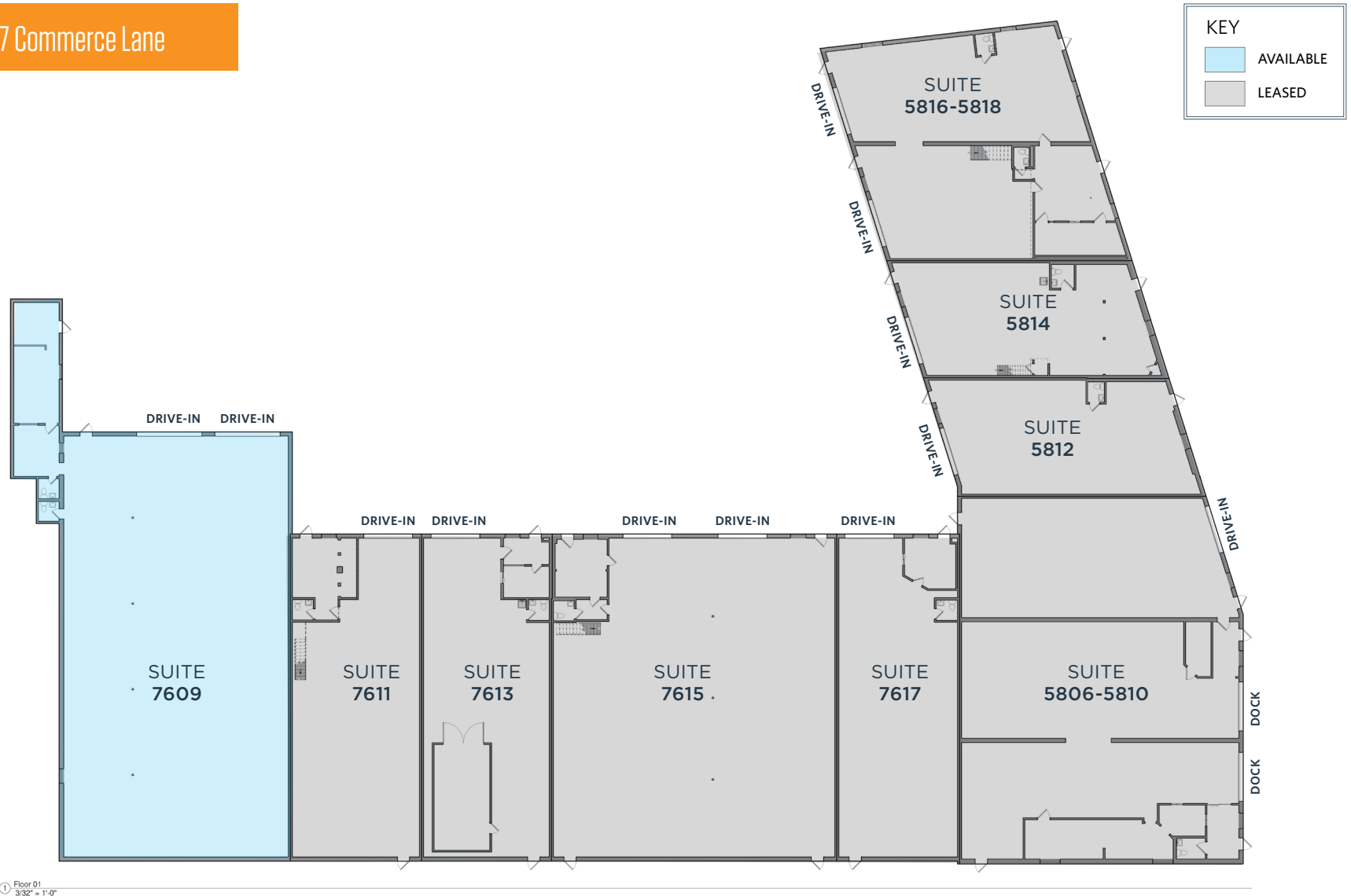
② Basement
1/8" = 1'-0"



① Floor 01
1/8" = 1'-0"

FLOOR PLAN

7609 - 7617 Commerce Lane



① Floor 01
3/32" = 1'-0"

PHOTOS

5808 - 5812 Kirby Road



PHOTOS

5822 - 5838 Kirby Road



PHOTOS

5840 - 5844 Kirby Road



5806 - 5830 KIRBY ROAD
5840 - 5844 KIRBY ROAD
7609 - 7617 COMMERCE LANE

Clinton, Maryland 20735
Prince George's County



For More Information, Please Contact:

AARON CARROLL
acarroll@klnb.com
202-652-2333

9881 Broken Land Parkway, Suite 300 | Columbia, MD 21046

klnb.com

CLICK TO VIEW PROPERTY WEBSITE



While we have no reason to doubt the accuracy of any of the information supplied, we cannot, and do not, guarantee its accuracy. All information should be independently verified prior to a purchase or lease of the property. We are not responsible for errors, omissions, misuse, or misinterpretation of information contained herein and make no warranty of any kind, express or implied, with respect to the property or any other matters.