



AVAILABILITY

- 7412 Gallerher Rd (Building D)
 - Suite D-1
 - 17,000 SF
 - Clear Height: 24 FT
 - 3 - Drive-ins (Drive through)
 - Small office
 - Available 7/1/26
 - \$16.75 NNN

PROPERTY HIGHLIGHTS

- Zoned M-1 - Heavy Industrial
- Great location off I-66, on the corner of Route 50 and Route 29
- Uses include but not limited to:
 - Warehousing
 - Assembly and Production
 - Distribution
 - Research and Development
 - Manufacturing

SITE PLAN

GAINESVILLE BUSINESS PARK

14235 JOHN MARSHALL HWY, GAINESVILLE, VA 20155, PRINCE WILLIAM COUNTY



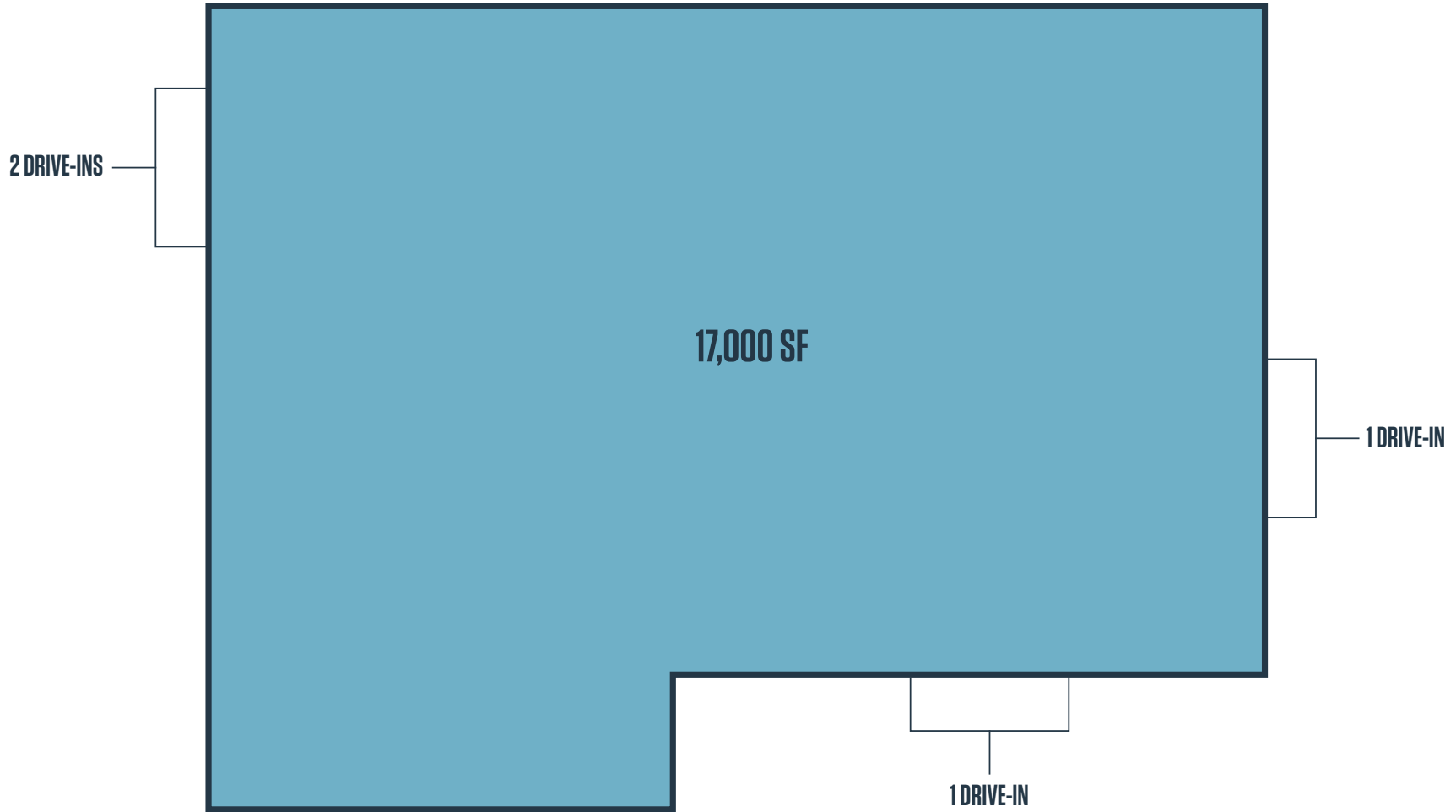
RYAN GOELLER, CCIM
rgoeller@klnb.com
703-268-2731

CHASE STEWART, CCIM
cstewart@klnb.com
703-268-2732

JEFF TARAE
jtarae@klnb.com
703-268-2741



BUILDING D - SUITE D-1 17,000 SF



RYAN GOELLER, CCIM
rgoeller@klnb.com
703-268-2731

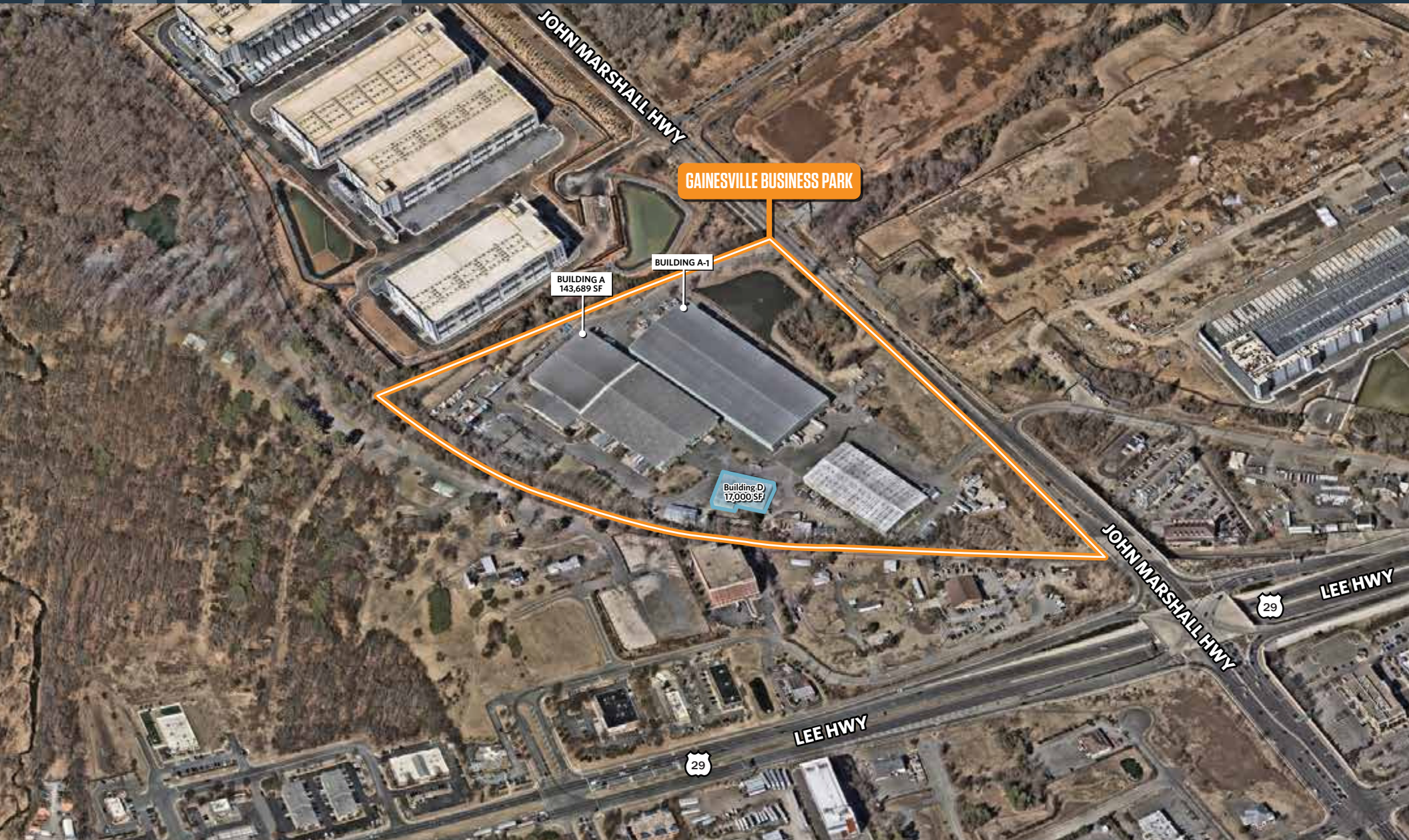
CHASE STEWART, CCIM
cstewart@klnb.com
703-268-2732

JEFF TARAE
jtarae@klnb.com
703-268-2741

AERIAL

GAINESVILLE BUSINESS PARK

14235 JOHN MARSHALL HWY, GAINESVILLE, VA 20155, PRINCE WILLIAM COUNTY



RYAN GOELLER, CCIM
rgoeller@klnb.com
703-268-2731

CHASE STEWART, CCIM
cstewart@klnb.com
703-268-2732

JEFF TARAE
jtarae@klnb.com
703-268-2741



FOR MORE INFORMATION, PLEASE CONTACT:

RYAN GOELLER, CCIM
rgoeller@klnb.com
703-268-2731

CHASE STEWART, CCIM
cstewart@klnb.com
703-268-2732

JEFF TARAE
jtarae@klnb.com
703-268-2741

8065 Leesburg Pike, Suite 700, Tysons, VA 22182

.....

klnb.com

 [instagram.com/klnbcre](https://www.instagram.com/klnbcre)

 [linkedin.com/company/klnb](https://www.linkedin.com/company/klnb)

 [facebook.com/KLNBCRE](https://www.facebook.com/KLNBCRE)

CLICK TO VIEW PROPERTY WEBSITE