



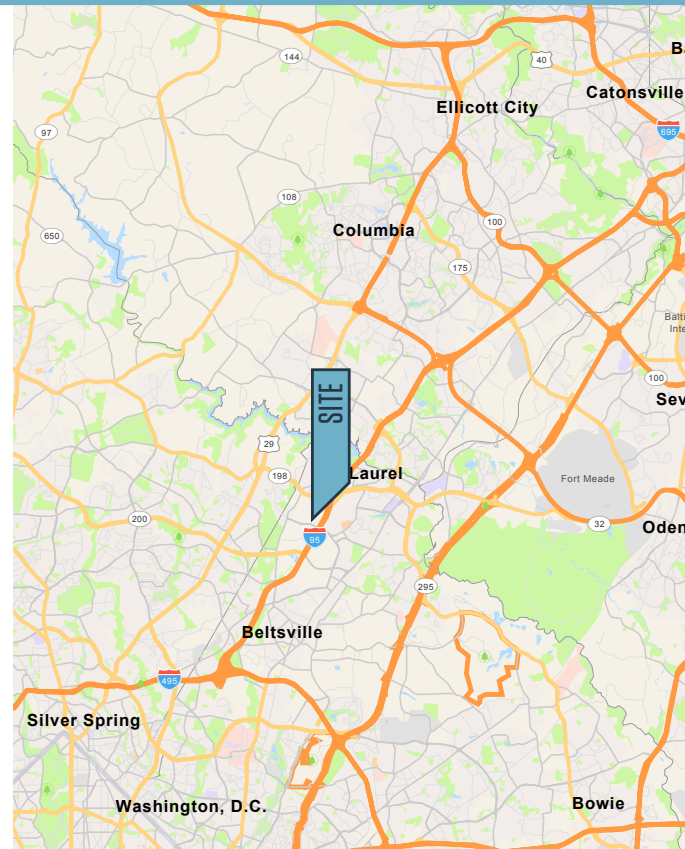
# OFFICE FOR LEASE

## AVAILABLE SUITE:

- **Suite 102:** 3,210 square feet

## PROPERTY HIGHLIGHTS:

- Well maintained, two-story office building
- **Rental Rate:** \$20.00/SF + utilities & cleaning
- **Parking:** Ample free surface parking
- **Access:** Two minutes from I-95; easy access to Routes 198, 29 and 1

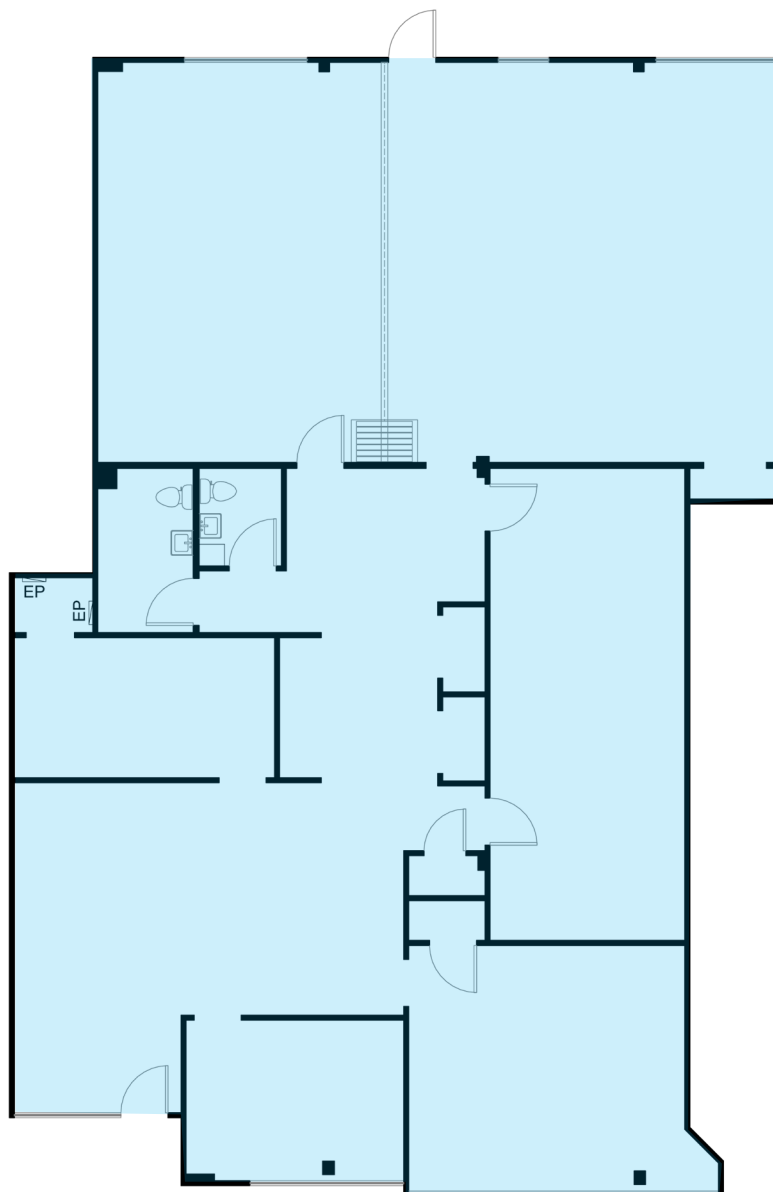


# 14900 SWEITZER LANE

Laurel, MD 20707 | Prince George's County

## FLOOR PLAN

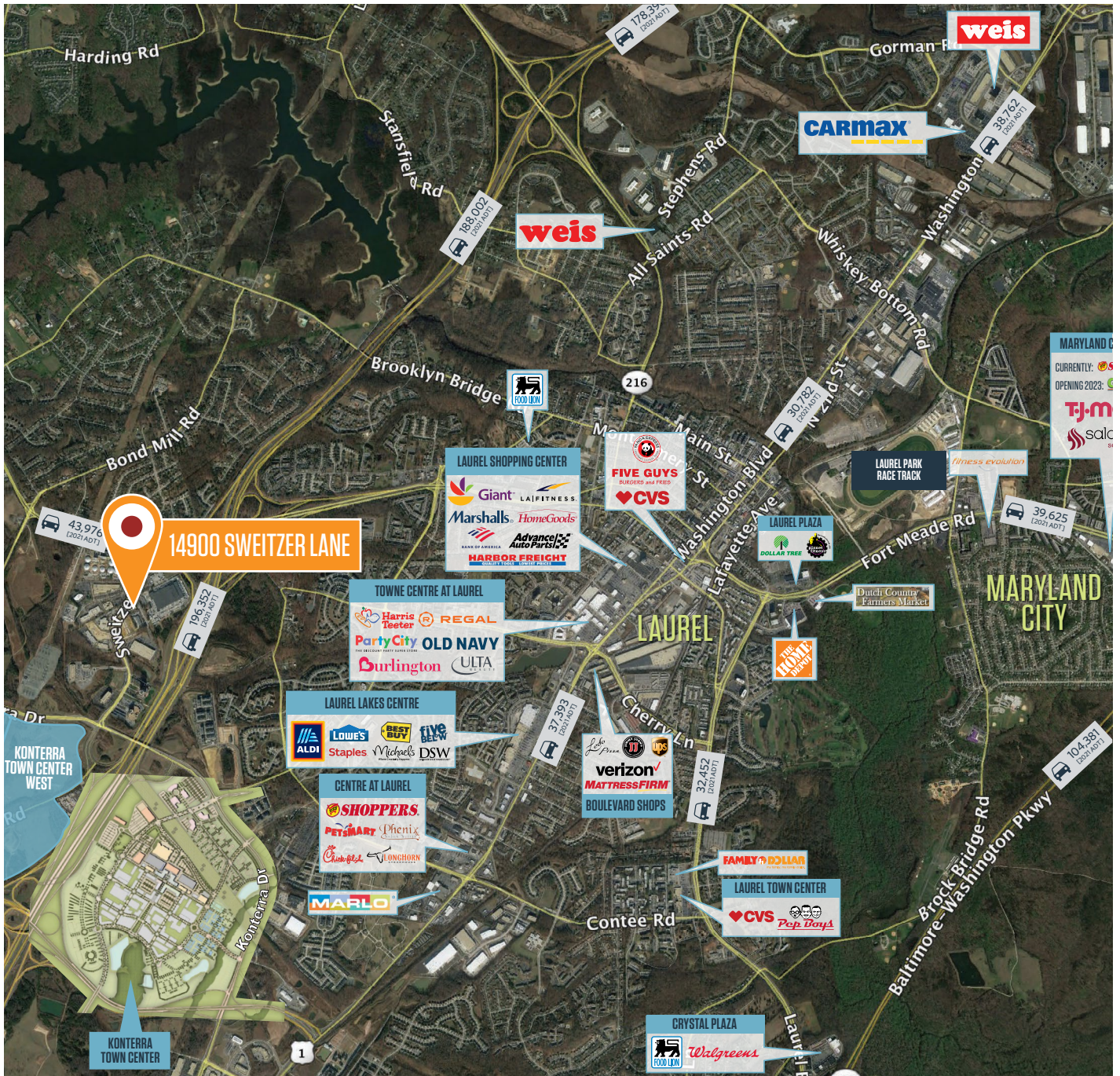
### SUITE 102 3,210 SF



**Chuck Breitenother**  
cbreitenother@klnb.com  
443-574-1422

**Abby Glassberg**  
aglassberg@klnb.com  
443-574-1433

## MARKET AERIAL



While we have no reason to doubt the accuracy of any of the information supplied, we cannot, and do not, guarantee its accuracy. All information should be independently verified prior to a purchase or lease of the property. We are not responsible for errors, omissions, misuse, or misinterpretation of information contained herein and make no warranty of any kind, express or implied, with respect to the property or any other matters.

14900 SWEITZER LANE  
Laurel, MD 20707 | Prince George's County



CLICK TO VIEW PROPERTY WEBSITE

For More Information, Please Contact:

**Chuck Breitenother**

[cbreitenother@klnb.com](mailto:cbreitenother@klnb.com)

443-574-1422

**Abby Glassberg**

[aglassberg@klnb.com](mailto:aglassberg@klnb.com)

443-574-1433

9881 Broken Land Parkway, Suite 300  
Columbia, MD 21046

[klnb.com](http://klnb.com)



[instagram.com/klnbcre](https://www.instagram.com/klnbcre)



[linkedin.com/company/klnb](https://www.linkedin.com/company/klnb)



[facebook.com/KLNBCRE](https://www.facebook.com/KLNBCRE)

While we have no reason to doubt the accuracy of any of the information supplied, we cannot, and do not, guarantee its accuracy. All information should be independently verified prior to a purchase or lease of the property. We are not responsible for errors, omissions, misuse, or misinterpretation of information contained herein and make no warranty of any kind, express or implied, with respect to the property or any other matters.

