



FOR LEASE

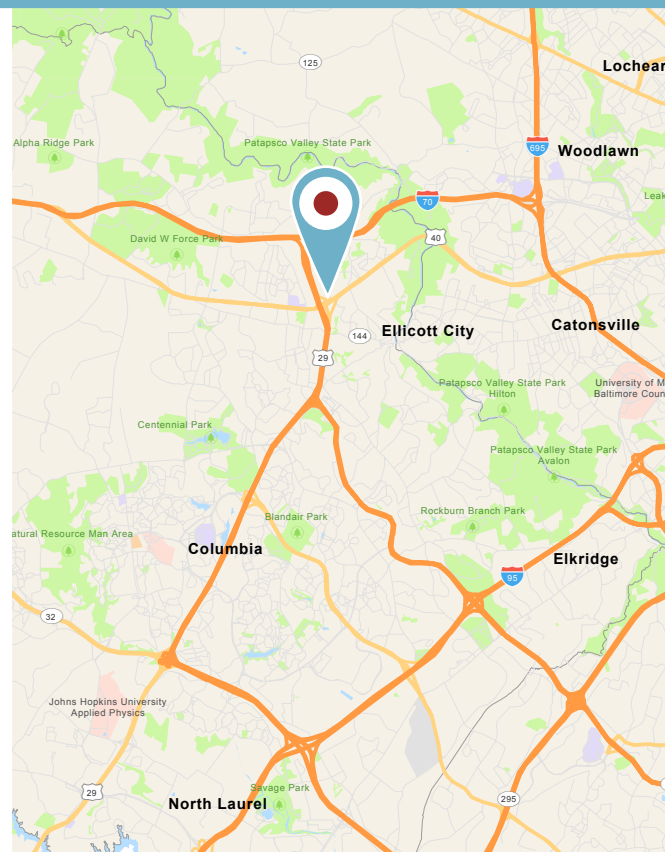
PROPERTY HIGHLIGHTS:

Available Suite

- **Suite 315:** » 1,506 square feet; Corner suite; \$27.00 per square foot, Full Service

Building Highlights

- 3 story Class "A" office building with on-site deli
- 4 parking spaces per 1,000 square foot
- Reserved underground parking at ratio of 1/2,000 square feet
- Strategically located at the intersection of Route 29 and Route 40 easily accessible to banking, shopping, restaurants and Columbia Town Center



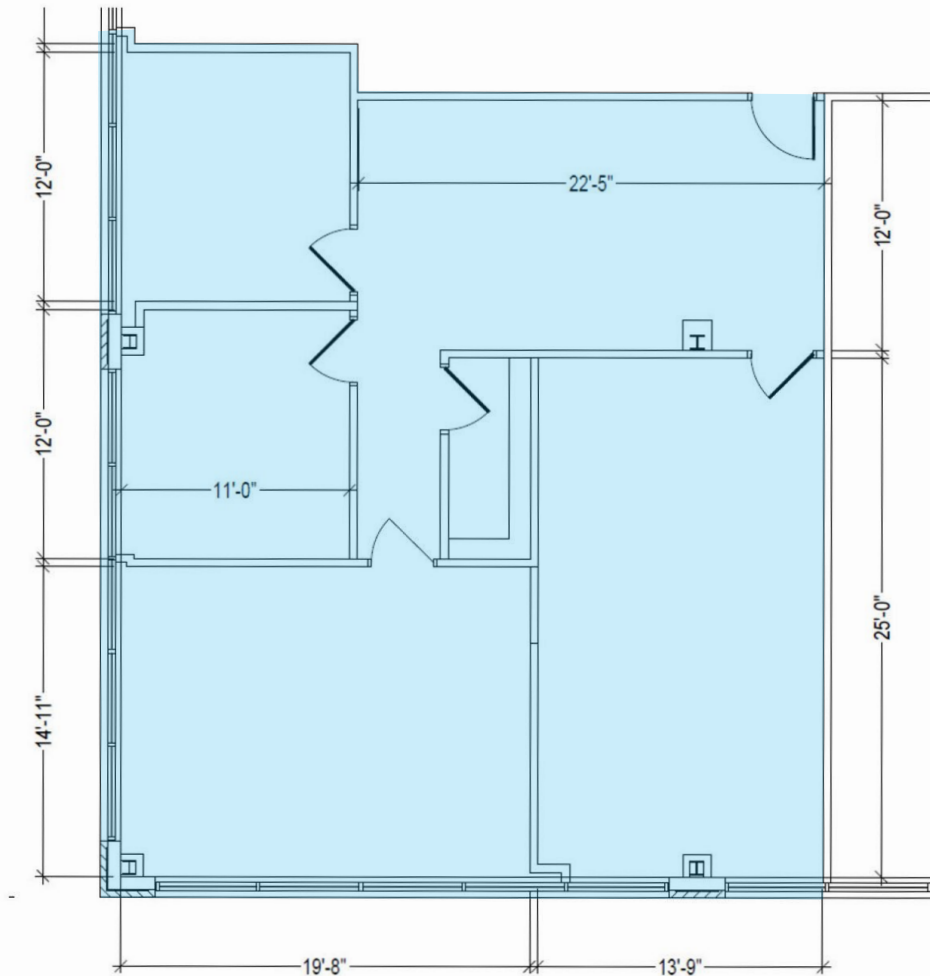
3290 N. RIDGE ROAD

Ellicott City, MD 21043 | Howard County

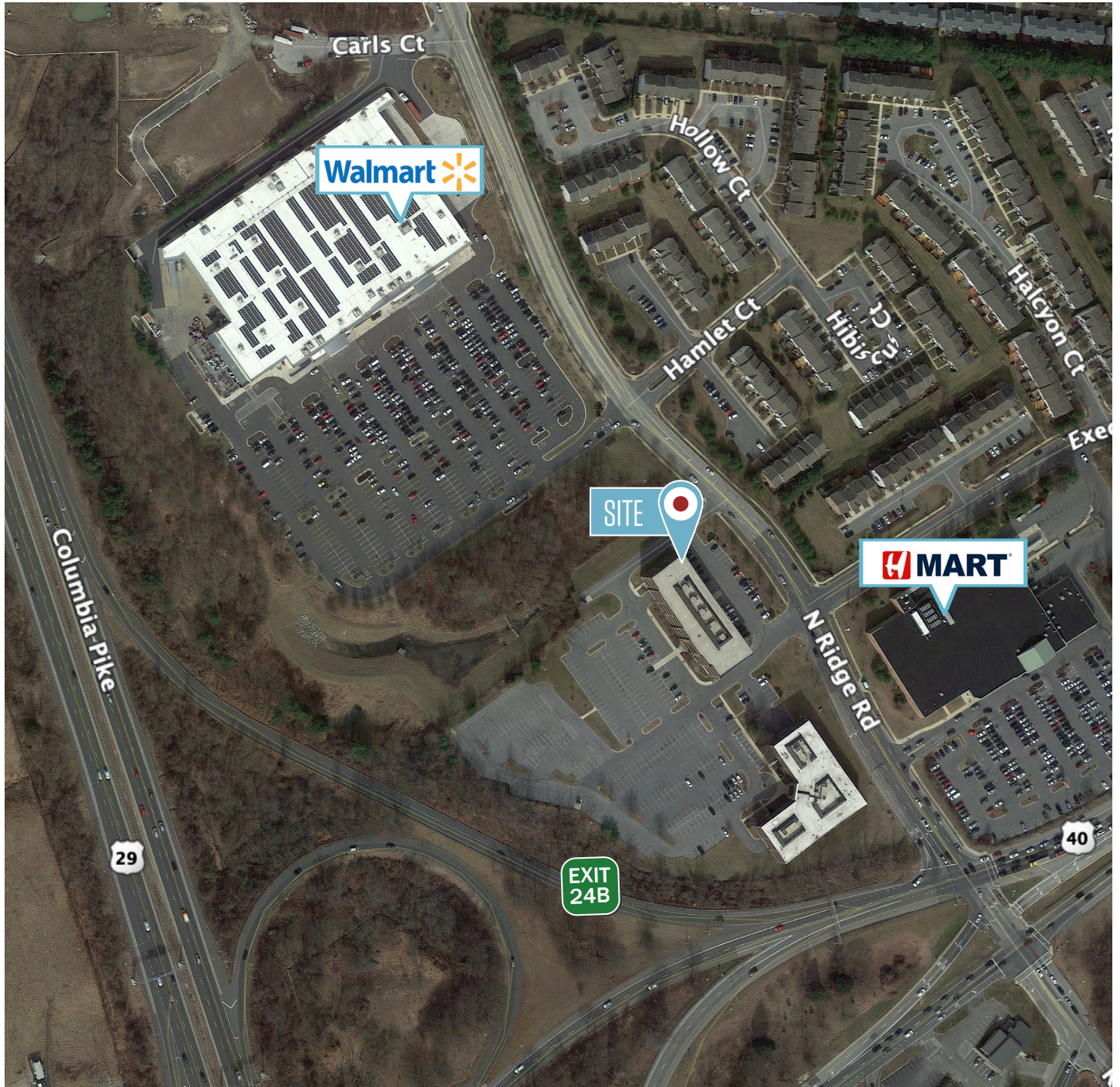
FLOOR PLAN | SUITE 315

Suite 315

1,506 RSF



AERIAL VIEW



While we have no reason to doubt the accuracy of any of the information supplied, we cannot, and do not, guarantee its accuracy. All information should be independently verified prior to a purchase or lease of the property. We are not responsible for errors, omissions, misuse, or misinterpretation of information contained herein and make no warranty of any kind, express or implied, with respect to the property or any other matters.

9881 Broken Land Pkwy, Suite 300
Columbia, MD 21046
klnb.com

3290 N. RIDGE ROAD

Ellicott City, MD 21043 | Howard County

[CLICK TO VIEW PROPERTY WEBSITE](#)

For More Information, Please Contact:

Chuck Breitenother

cbreitenother@klnb.com

443-574-1422

David J. Fritz, CCIM, SIOR

dfritz@klnb.com

443-574-1410

9881 Broken Land Parkway, Suite 300
Columbia, MD 21046

klnb.com



[instagram.com/klnbcre](https://www.instagram.com/klnbcre)



[linkedin.com/company/klnb](https://www.linkedin.com/company/klnb)



[facebook.com/KLNBCRE](https://www.facebook.com/KLNBCRE)

While we have no reason to doubt the accuracy of any of the information supplied, we cannot, and do not, guarantee its accuracy. All information should be independently verified prior to a purchase or lease of the property. We are not responsible for errors, omissions, misuse, or misinterpretation of information contained herein and make no warranty of any kind, express or implied, with respect to the property or any other matters.

