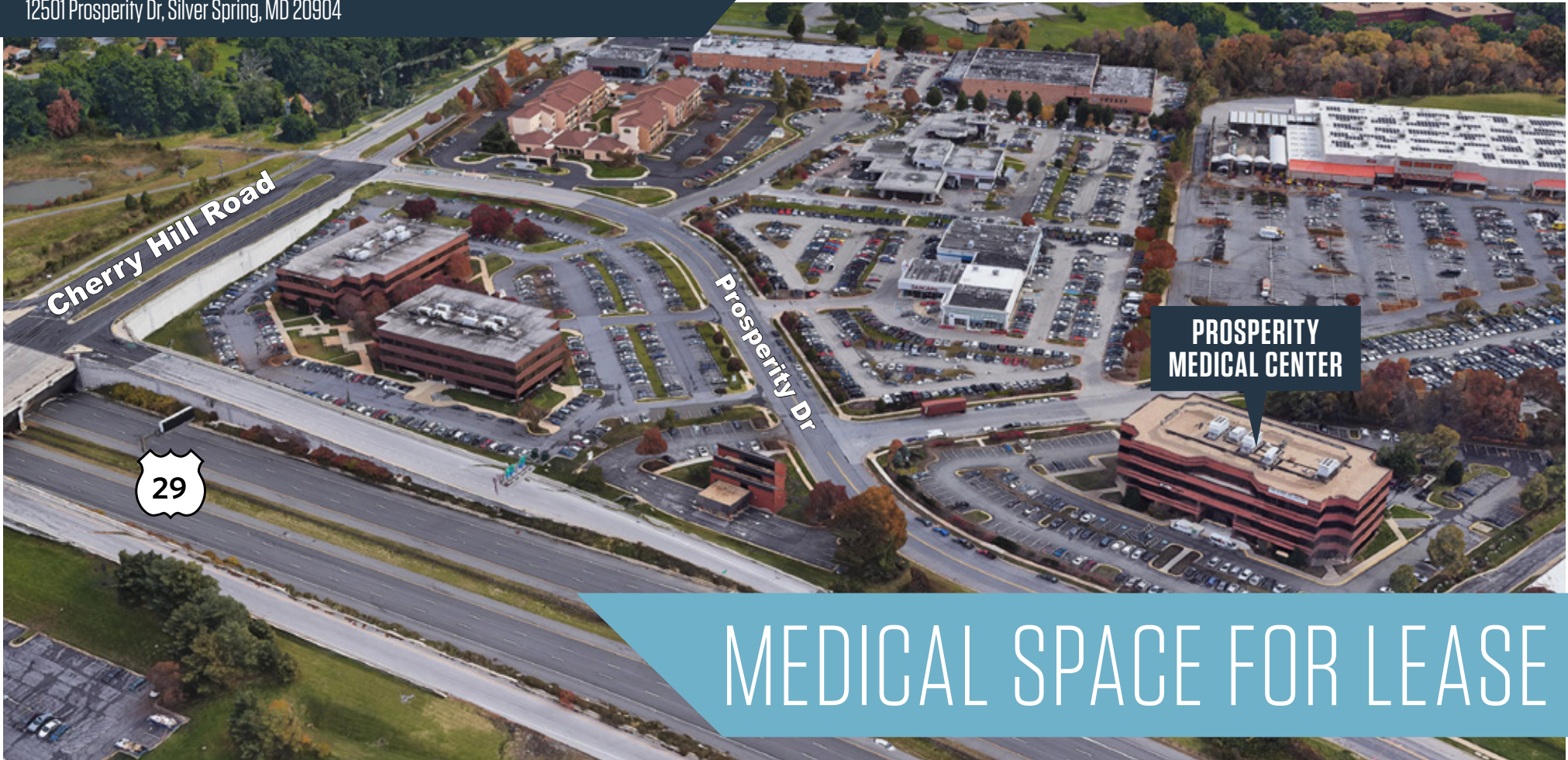


PROSPERITY MEDICAL CENTER

12501 Prosperity Dr, Silver Spring, MD 20904



MEDICAL SPACE FOR LEASE

HIGHLIGHTS:

- Ideally located near Route 29, ICC, I-95 and I-495 with convenient access to Baltimore-Washington International airport.
- 6 minutes (1.6 mi.) to ICC | 7 minutes (2.6 mi.) to I-95 | 10 minutes (4.2 mi) to I-495
- Free surface parking.
- Adjacent retail centers, hotels and restaurants.
- Responsive local ownership and management.

OWNED BY:

DSC Partners
A Donatelli | Smith Capital Company

Kenneth Fellows
kfellows@klnb.com
301-222-0210

Robert Pugh
rpugh@klnb.com
301-222-0211

Keiry Martinez
kmartinez@klnb.com
703-334-5629

klnb

PROSPERITY MEDICAL CENTER



Kenneth Fellows
kfellows@klnb.com
301-222-0210

Robert Pugh
rpugh@klnb.com
301-222-0211

Keiry Martinez
kmartinez@klnb.com
703-334-5629



PROSPERITY MEDICAL CENTER

12501 Prosperity Dr, Silver Spring, MD 20904



- Suite 200 | 1,116 SF
- Suite 205 | 2,118 SF
- Suite 215 | 2,131 SF
- Suite 235 | 3,427 SF
- Suite 250 | 2,827 SF
- Total Contiguous | 6,254 SF

FLOOR PLAN

Kenneth Fellows
kfellows@klnb.com
301-222-0210

Robert Pugh
rpugh@klnb.com
301-222-0211

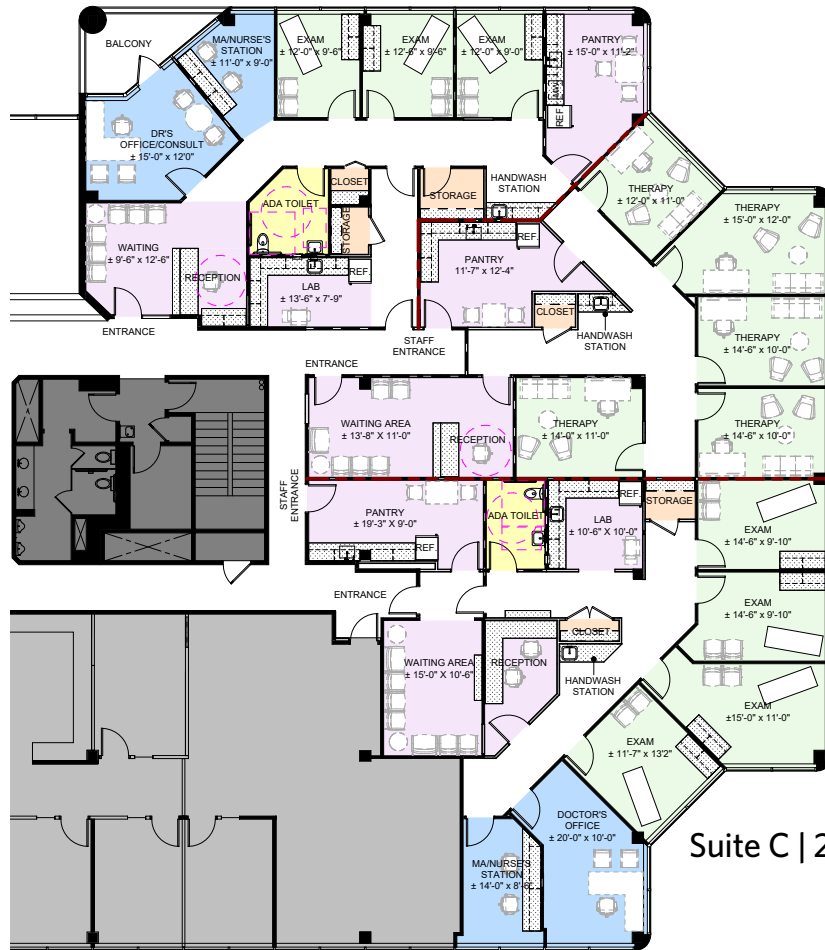
Keiry Martinez
kmartinez@klnb.com
703-334-5629

klnb

PROSPERITY MEDICAL CENTER

12501 Prosperity Dr, Silver Spring, MD 20904

Suite A | 2,084 SF



Suite B | 1,822 SF

Suite C | 2,348 SF



HYPOTHETICAL FLOOR PLAN

HYPOTHETICAL FLOOR PLAN

Kenneth Fellows
kfellows@klnb.com
301-222-0210

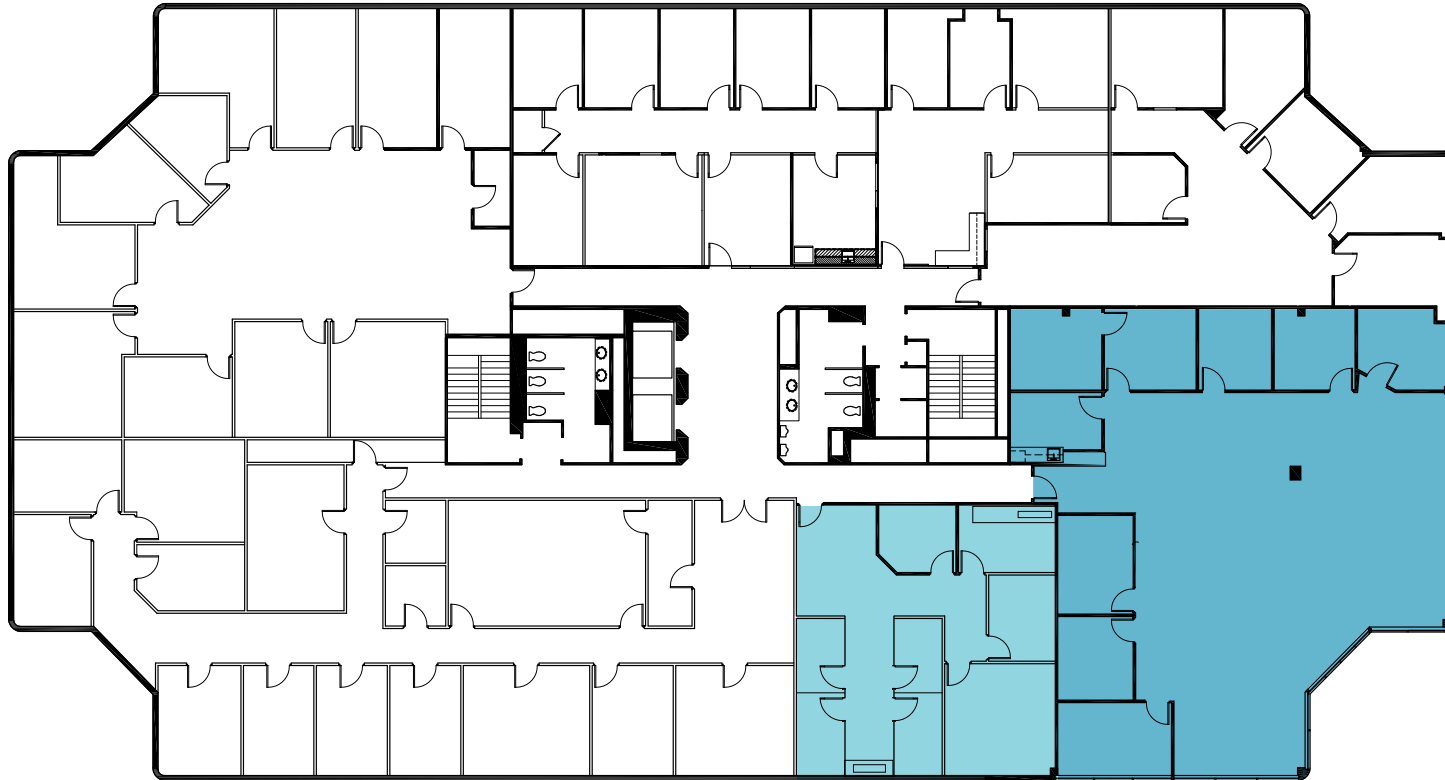
Robert Pugh
rpugh@klnb.com
301-222-0211

Keiry Martinez
kmartinez@klnb.com
703-334-5629



PROSPERITY MEDICAL CENTER

12501 Prosperity Dr, Silver Spring, MD 20904



- Suite 330 | 1,500 SF
- Suite 350 | 3,507 SF
- Total Contiguous | 5,007 SF

FLOOR PLAN

Kenneth Fellows
kfellows@klnb.com
301-222-0210

Robert Pugh
rpugh@klnb.com
301-222-0211

Keiry Martinez
kmartinez@klnb.com
703-334-5629



PROSPERITY MEDICAL CENTER

12501 Prosperity Dr, Silver Spring, MD 20904



- Suite 400 | 3,452 SF
- Suite 455 | 1,103 SF
- Total Contiguous | 4,555 SF
- Suite 401/410 | 3,689 SF

FLOOR PLAN

Kenneth Fellows
kfellows@klnb.com
301-222-0210

Robert Pugh
rpugh@klnb.com
301-222-0211

Keiry Martinez
kmartinez@klnb.com
703-334-5629

klnb

PROSPERITY MEDICAL CENTER

12501 Prosperity Dr, Silver Spring, MD 20904



MEADOWS III - 12501 PROSPERITY DR

Kenneth Fellows
kfellows@klnb.com
301-222-0210

Robert Pugh
rpugh@klnb.com
301-222-0211

Keiry Martinez
kmartinez@klnb.com
703-334-5629

klnb

PROSPERITY MEDICAL CENTER

12501 Prosperity Dr, Silver Spring, MD 20904

For More Information, Please Contact:

Kenneth Fellows

kfellows@klnb.com

301-222-0210

Robert Pugh

rpugh@klnb.com

301-222-0211

Keiry Martinez

kmartinez@klnb.com

703-334-5629

12435 Park Potomac Ave, Suite 250
Rockville, MD 20854

klnb.com



[instagram.com/klnbcre](https://www.instagram.com/klnbcre)



[linkedin.com/company/klnb](https://www.linkedin.com/company/klnb)



[facebook.com/KLNBCRE](https://www.facebook.com/KLNBCRE)

While we have no reason to doubt the accuracy of any of the information supplied, we cannot, and do not, guarantee its accuracy. All information should be independently verified prior to a purchase or lease of the property. We are not responsible for errors, omissions, misuse, or misinterpretation of information contained herein and make no warranty of any kind, express or implied, with respect to the property or any other matters.

