

# 603 SAINT AGNES LANE

Baltimore, Maryland 21229 | Baltimore County

SAINT AGNES CATHOLIC SCHOOL

FOR LEASE



## FEATURES

- **Total Square Feet:** 30,876 square feet
- **Lease Rate:** \$10.00 per square foot, NNN
- **Year Built:** 1954
- Basement has 2,000 square feet; Gym has 960 square feet
- Main floor serves grades 1,4 and 5 in six (six) classrooms with administrative office
- Top floor serves grades 6, 7, and 8 in six (six) classrooms with faculty room
- Classrooms average 25 students

**NAI**klnb

**David J. Fritz, CCIM, SIOR**  
dfritz@klnb.com  
443-574-1410

**Austin Eber**  
aeber@klnb.com  
443-574-1414

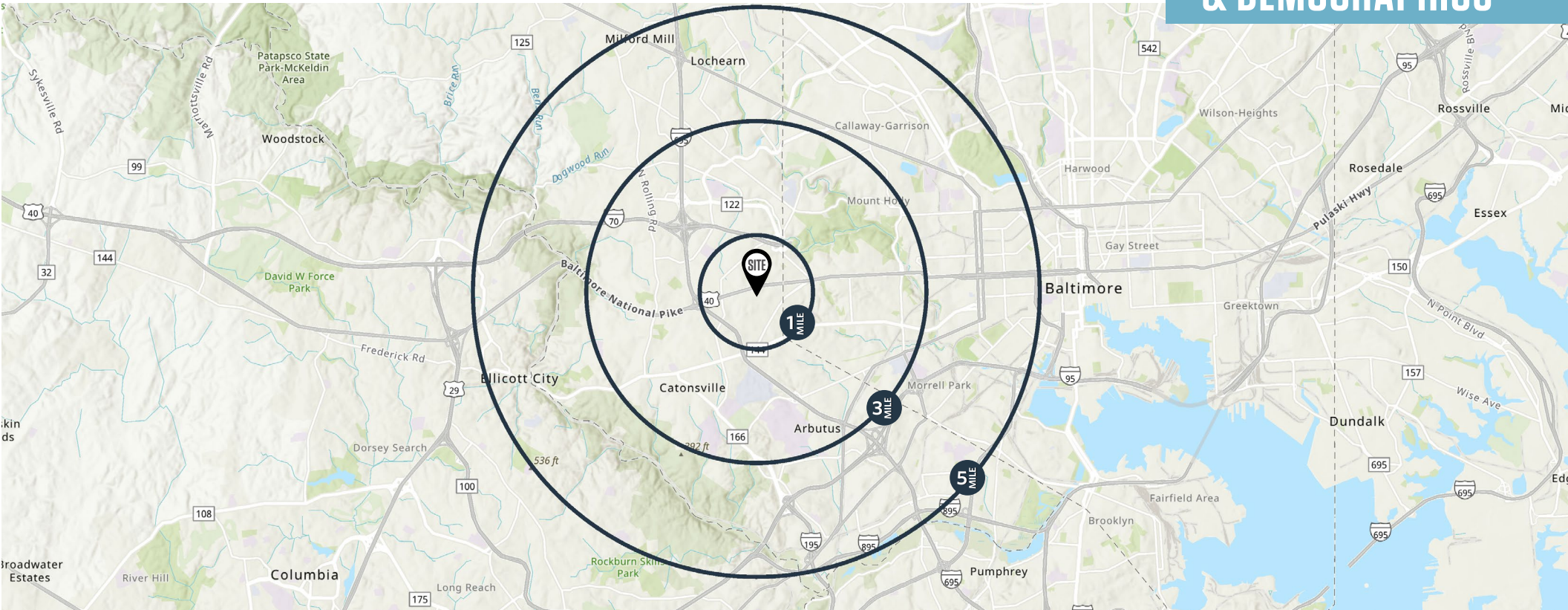
9881 Broken Land Pkwy, Suite 300  
Columbia, MD 21046

# 603 SAINT AGNES LANE

Baltimore, Maryland 21229 | Baltimore County

LOCATION

& DEMOGRAPHICS



## TRAFFIC COUNTS | 2025

Old Frederick Road	2,026 ADT
Baltimore National Pike [Route 40]	23,081 ADT

	1-MILE	3-MILES	5-MILES	1-MILE	3-MILES	5-MILES	
Population	22,856	140,732	341,742	Households	9,329	55,850	138,102
Daytime Population	16,799	96,127	329,857	Median Household Income	\$75,007	\$70,394	\$63,670

David J. Fritz, CCIM, SIO  
dfritz@klnb.com  
443-574-1410

Austin Eber  
aeber@klnb.com  
443-574-1414

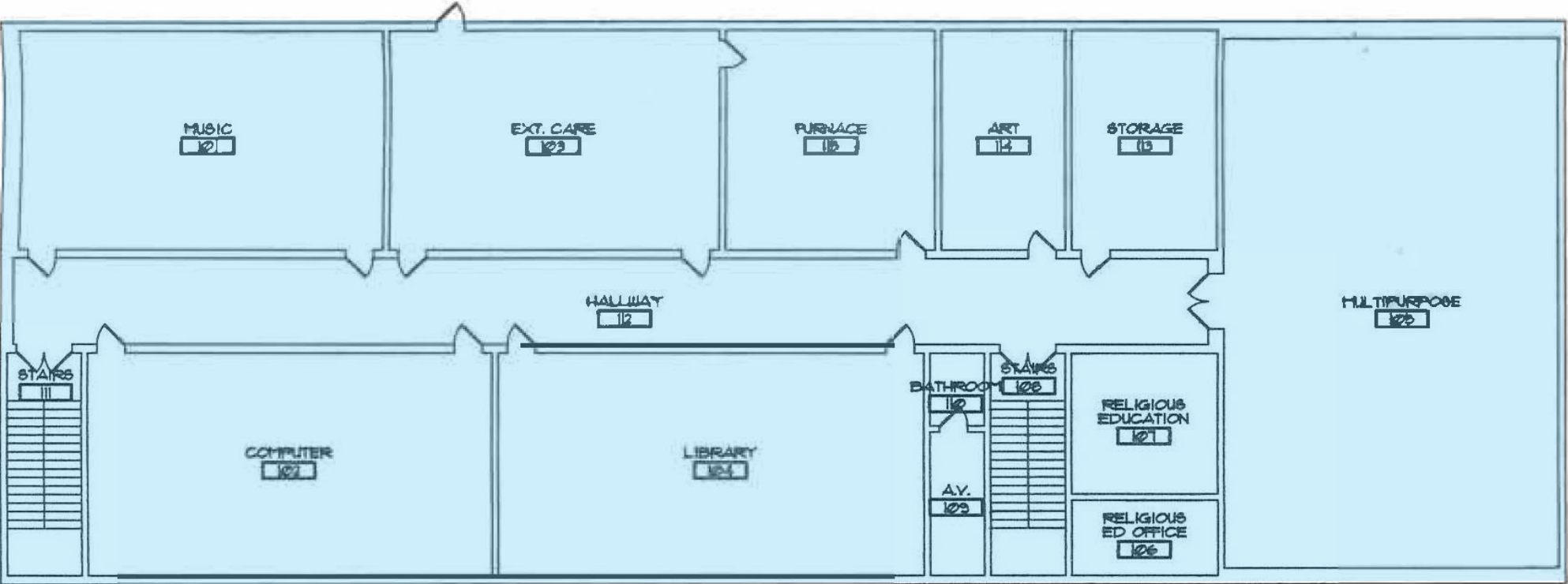
9881 Broken Land Pkwy, Suite 300  
Columbia, MD 21046  
klnb.com



# 603 SAINT AGNES LANE

Baltimore, Maryland 21229 | Baltimore County

## 1<sup>ST</sup> FLOOR PLAN



David J. Fritz, CCIM, SIO  
dfritz@klnb.com  
443-574-1410

Austin Eber  
aeber@klnb.com  
443-574-1414

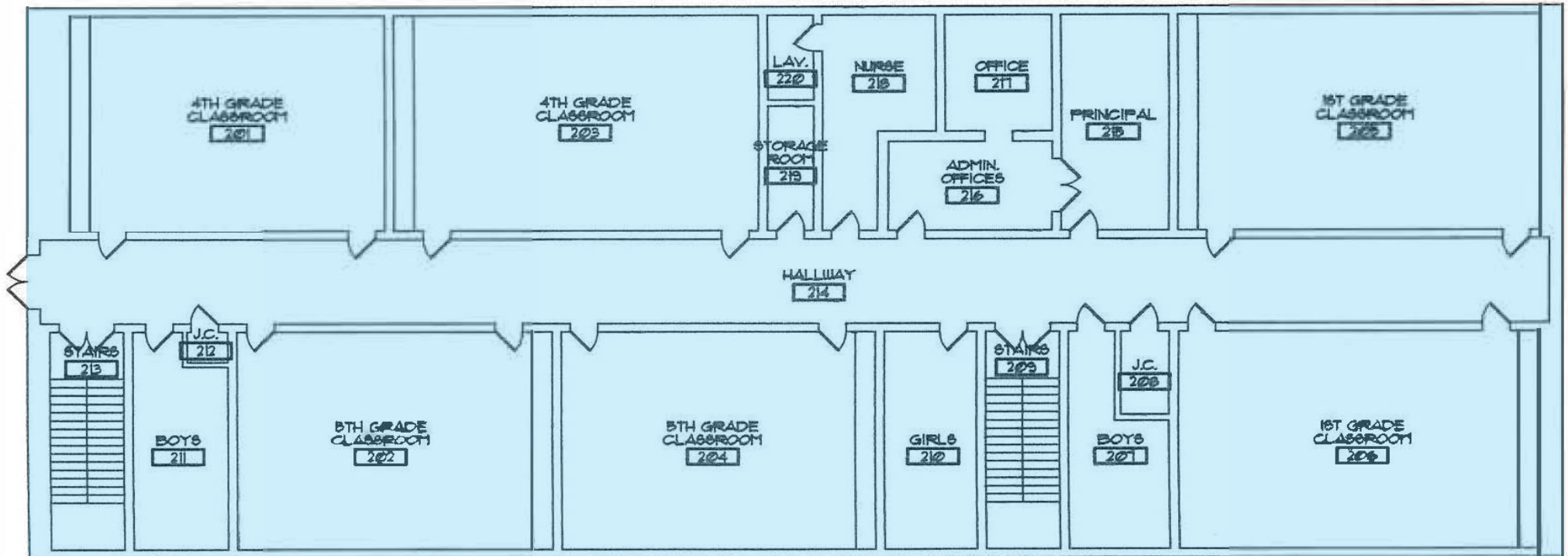
9881 Broken Land Pkwy, Suite 300  
Columbia, MD 21046  
klnb.com



# 603 SAINT AGNES LANE

Baltimore, Maryland 21229 | Baltimore County

## 2<sup>ND</sup> FLOOR PLAN



David J. Fritz, CCIM, SIO  
dfritz@klnb.com  
443-574-1410

Austin Eber  
aeber@klnb.com  
443-574-1414

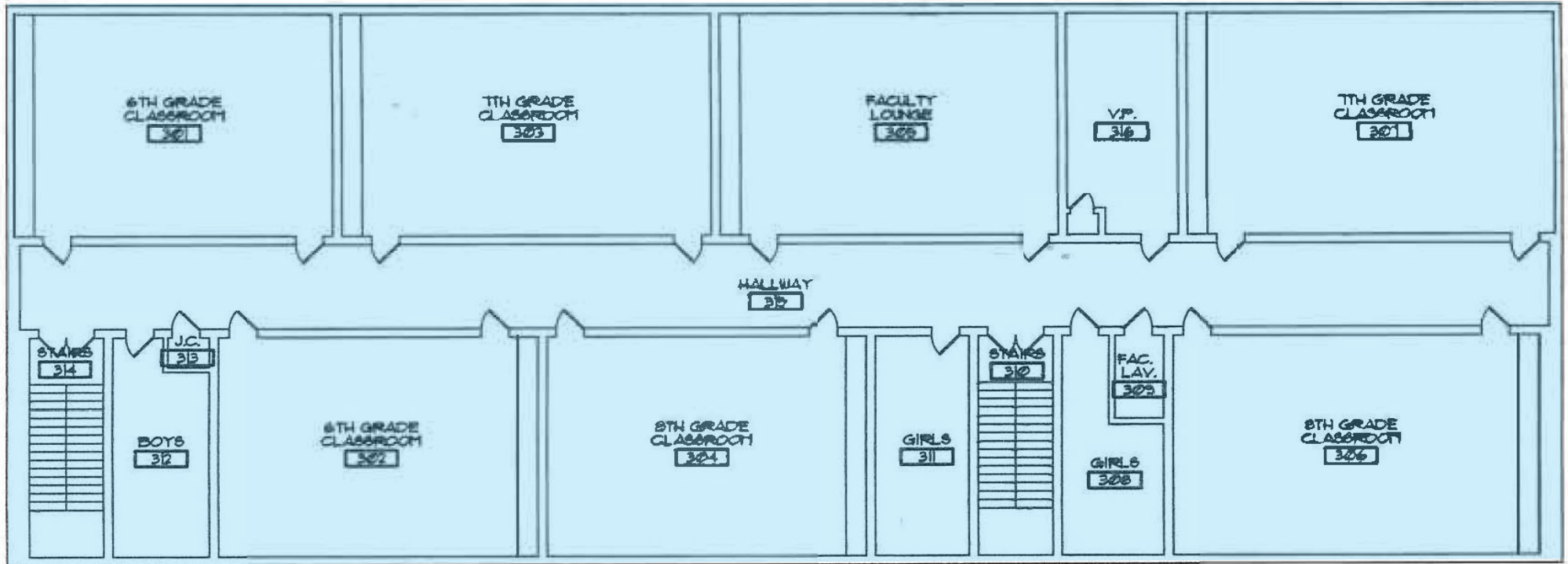
9881 Broken Land Pkwy, Suite 300  
Columbia, MD 21046  
klnb.com



# 603 SAINT AGNES LANE

Baltimore, Maryland 21229 | Baltimore County

## 3<sup>RD</sup> FLOOR PLAN



David J. Fritz, CCIM, SIO  
dfritz@klnb.com  
443-574-1410

Austin Eber  
aeber@klnb.com  
443-574-1414

9881 Broken Land Pkwy, Suite 300  
Columbia, MD 21046  
klnb.com



# 603 SAINT AGNES LANE

Baltimore, Maryland 21229 | Baltimore County

AERIAL VIEW



David J. Fritz, CCIM, SIO  
dfritz@klnb.com  
443-574-1410

Austin Eber  
aeber@klnb.com  
443-574-1414

9881 Broken Land Pkwy, Suite 300  
Columbia, MD 21046  
klnb.com



# 603 SAINT AGNES LANE

Baltimore, Maryland 21229 | Baltimore County

PHOTOS



David J. Fritz, CCIM, SIO  
dfritz@klnb.com  
443-574-1410

Austin Eber  
aeber@klnb.com  
443-574-1414

9881 Broken Land Pkwy, Suite 300  
Columbia, MD 21046  
klnb.com



# 603 SAINT AGNES LANE

Baltimore, Maryland 21229

Baltimore County

[CLICK TO VIEW PROPERTY WEBSITE](#)

**For More Information, Please Contact:**

**David J. Fritz, CCIM, SIOR**

dfritz@klnb.com

443-574-1410

**Austin Eber**

aeber@klnb.com

443-574-1414



While we have no reason to doubt the accuracy of any of the information supplied, we cannot, and do not, guarantee its accuracy. All information should be independently verified prior to a purchase or lease of the property. We are not responsible for errors, omissions, misuse, or misinterpretation of information contained herein and make no warranty of any kind, express or implied, with respect to the property or any other matters.

9881 Broken Land Pkwy, Suite 300  
Columbia, MD 21046  
[klnb.com](http://klnb.com)

