



Designated HUBZone

## AVAILABILITY:

108 South Street SE

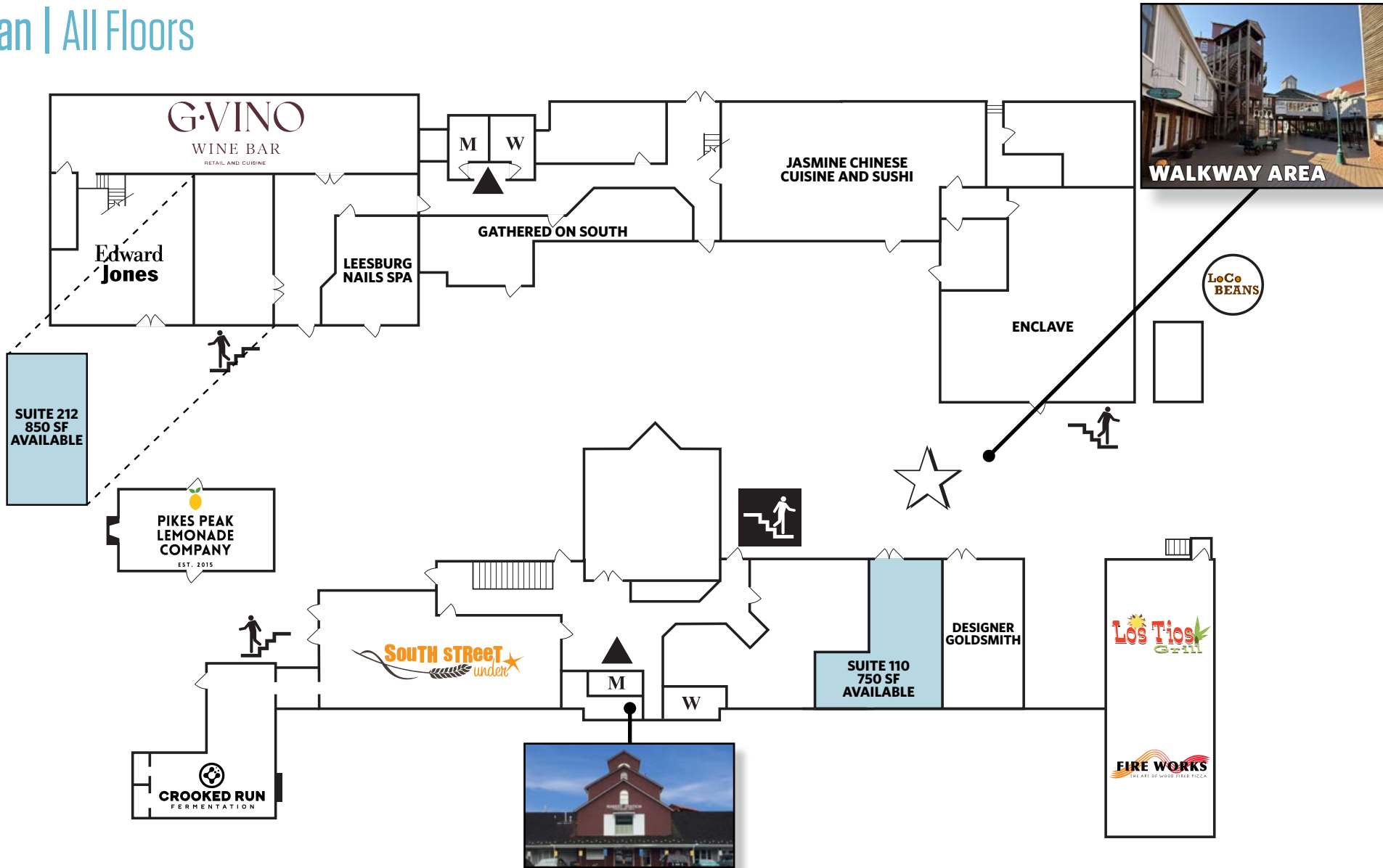
- Suite 212 - 850 SF

- Office - 2<sup>nd</sup> floor available

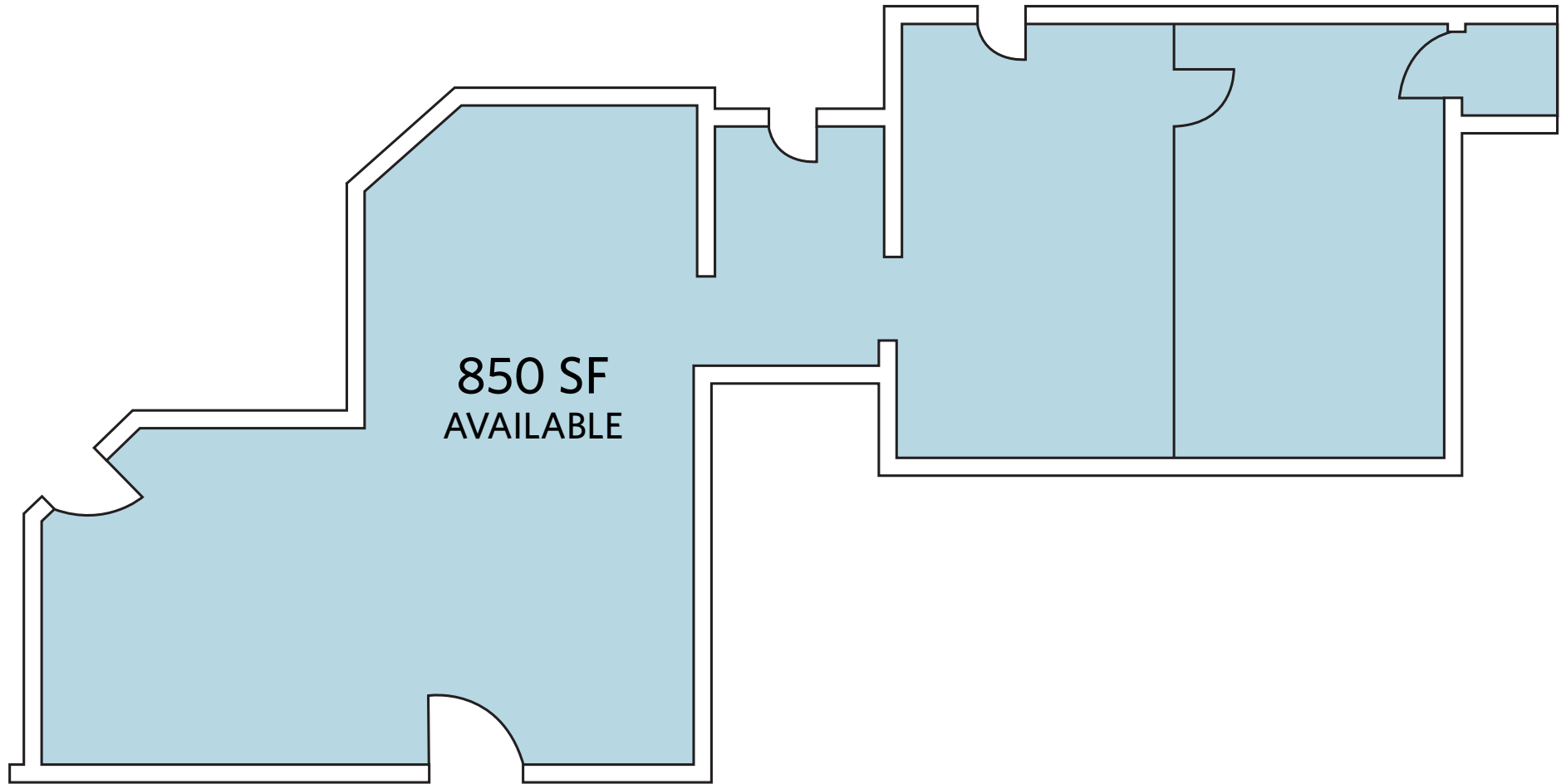
## PROPERTY FEATURES:

- Located within HUBZone
- Downtown Leesburg across from the Government Center
- One block from the County Court System
- Highly sought after location next to Tuscarora Mill
- Deli/Restaurants On-Site
- Loft Style Office Suites
- High Visibility
- On-Site Management
- Parking On-Site
- Signage Available

## Site Plan | All Floors



108 South St SE, Suite 212 | 850 SF



# PHOTOS

# MARKET STATION

203 HARRISON STREET SE; 110 SOUTH STREET SE; 112 SOUTH STREET SE | LEESBURG, VA 20175



**JEFF TARAE**

[jtarae@klnb.com](mailto:jtarae@klnb.com) | 703-268-2741

**BILLY KELLY**

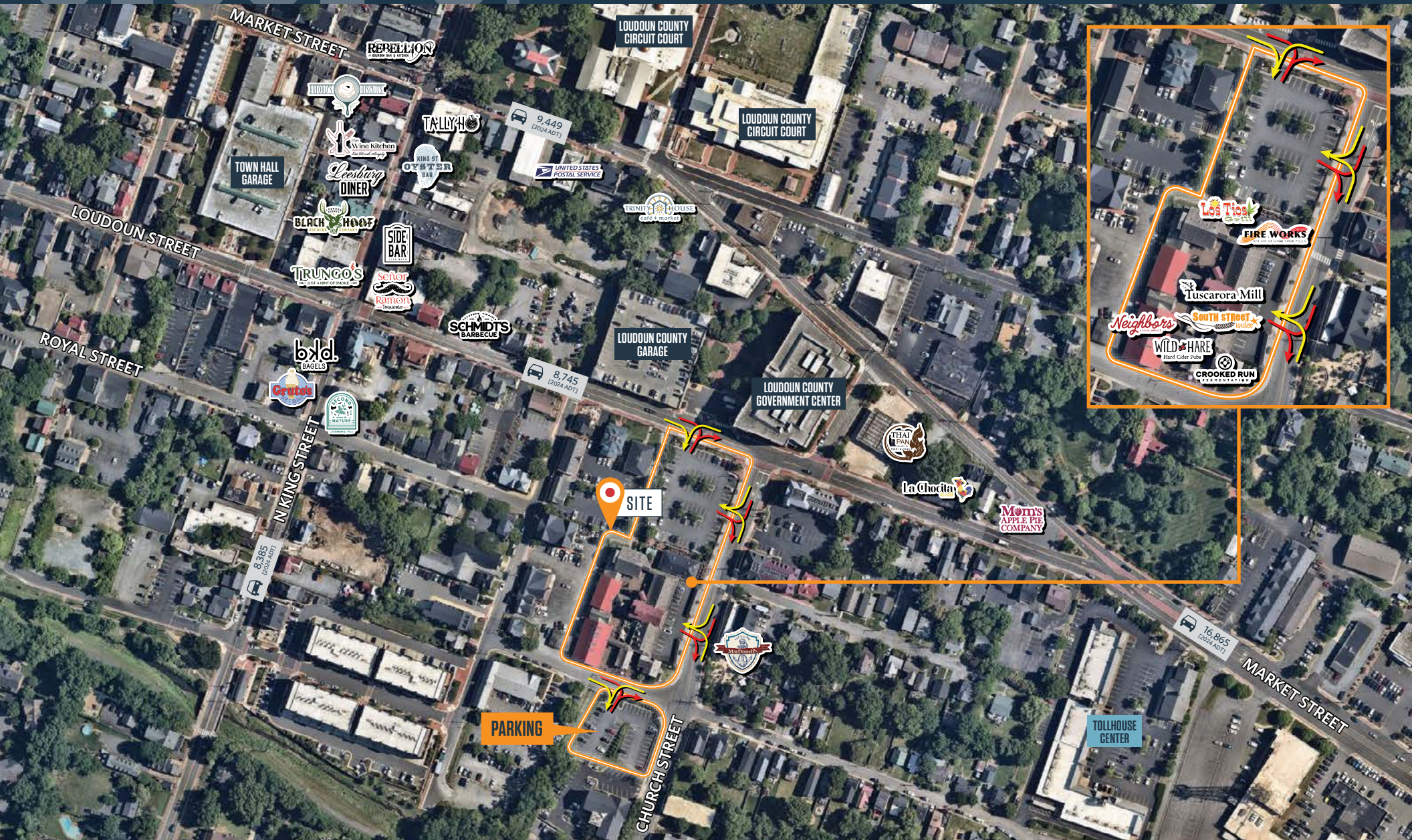
[bkelly@klnb.com](mailto:bkelly@klnb.com) | 703-268-2706



# CLOSE-UP

# MARKET STATION

203 HARRISON STREET SE; 110 SOUTH STREET SE; 112 SOUTH STREET SE | LEESBURG, VA 20175



JEFF TARAE  
jtarae@klnb.com | 703-268-2741

BILLY KELLY  
bkelly@klnb.com | 703-268-2706



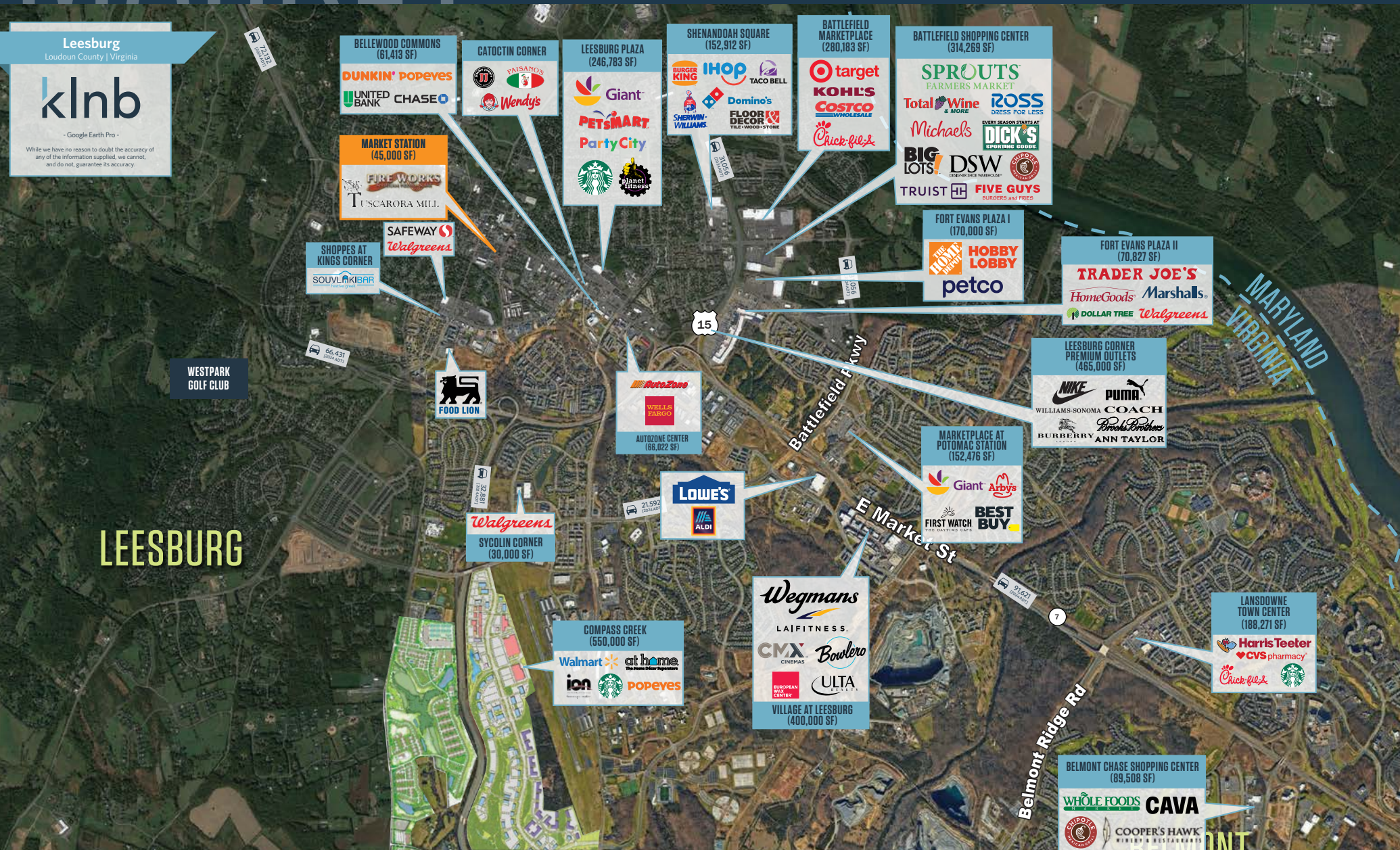
# MARKET

# MARKET STATION

203 HARRISON STREET SE; 110 SOUTH STREET SE; 112 SOUTH STREET SE | LEESBURG, VA 20175

**Leesburg**  
Loudoun County | Virginia

- Google Earth Pro -  
While we have no reason to doubt the accuracy of any of the information supplied, we cannot, and do not, guarantee its accuracy.



**JEFF TARAE**  
jtarae@klnb.com | 703-268-2741

**BILLY KELLY**  
bkelly@klnb.com | 703-268-2706



## FOR MORE INFORMATION, PLEASE CONTACT:

### OFFICE

#### JEFF TARAE

[jtarae@kInb.com](mailto:jtarae@kInb.com)  
703-268-2741

### RETAIL

#### BILLY KELLY

[bkelly@kInb.com](mailto:bkelly@kInb.com)  
703-268-2706

8065 Leesburg Pike, Suite 700, Tysons, VA 22182

.....

**kInb.com**



[instagram.com/kInbcre](https://www.instagram.com/kInbcre)



[linkedin.com/company/kInb](https://www.linkedin.com/company/kInb)



[facebook.com/KLNBCRE](https://www.facebook.com/KLNBCRE)

**CLICK TO VIEW PROPERTY WEBSITE**



**SCAN TO VIEW  
PROPERTY WEBSITE**