

# MEADOWS CORPORATE PARK

Meadows I  
12510 Prosperity Dr, Silver Spring, MD 20904



## OFFICE SPACE FOR LEASE

### HIGHLIGHTS:

- Ideally located near Route 29, ICC, I-95 and I-495 with convenient access to Baltimore-Washington International airport.
- 6 minutes (1.6 mi.) to ICC | 7 minutes (2.6 mi.) to I-95 | 10 minutes (4.2 mi) to I-495
- Free surface parking.
- Adjacent retail centers, hotels and restaurants.
- Responsive local ownership and management.

OWNED BY:

**DSC Partners**  
A Donatelli | Smith Capital Company

**Kenneth Fellows**  
kfellows@klnb.com  
301-222-0210

**Robert Pugh**  
rpugh@klnb.com  
301-222-0211

**Keiry Martinez**  
kmartinez@klnb.com  
703-334-5629

**klnb**

# MEADOWS CORPORATE PARK

Meadows I  
12510 Prosperity Dr, Silver Spring, MD 20904



SITE AERIAL

Kenneth Fellows  
kfellows@klnb.com  
301-222-0210

Robert Pugh  
rpugh@klnb.com  
301-222-0211

Keiry Martinez  
kmartinez@klnb.com  
703-334-5629

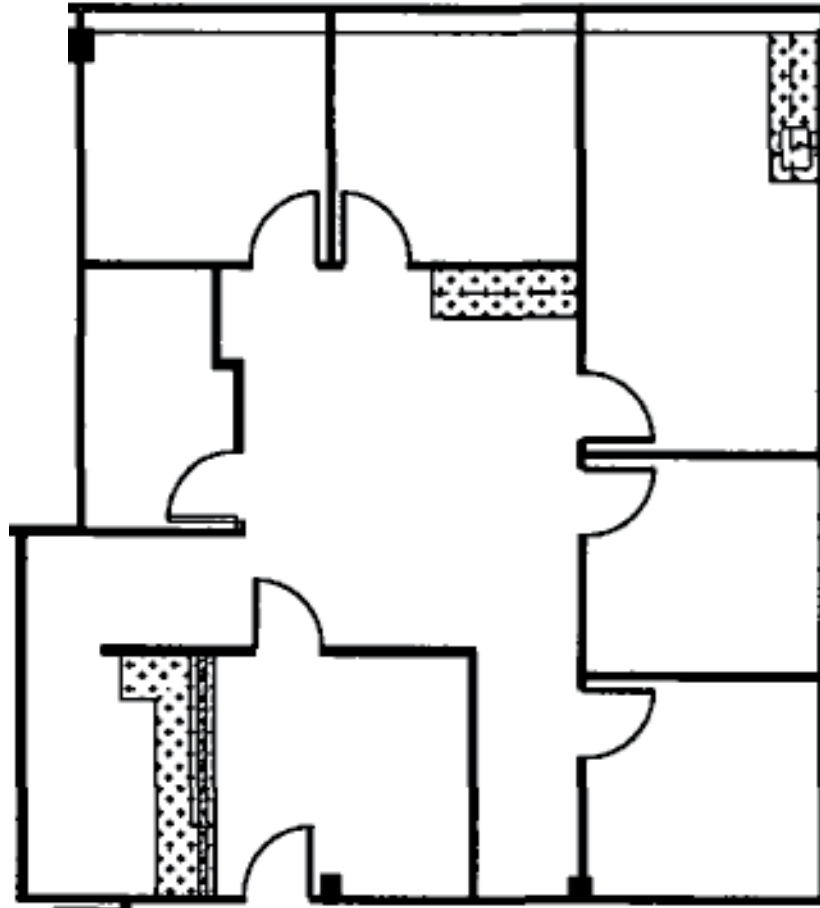


# MEADOWS CORPORATE PARK

Meadows I  
12510 Prosperity Dr, Silver Spring, MD 20904

## SECOND FLOOR

Suite 260 | 1,499 SF



FLOOR PLAN

**Kenneth Fellows**  
kfellows@klnb.com  
301-222-0210

**Robert Pugh**  
rpugh@klnb.com  
301-222-0211

**Keiry Martinez**  
kmartinez@klnb.com  
703-334-5629

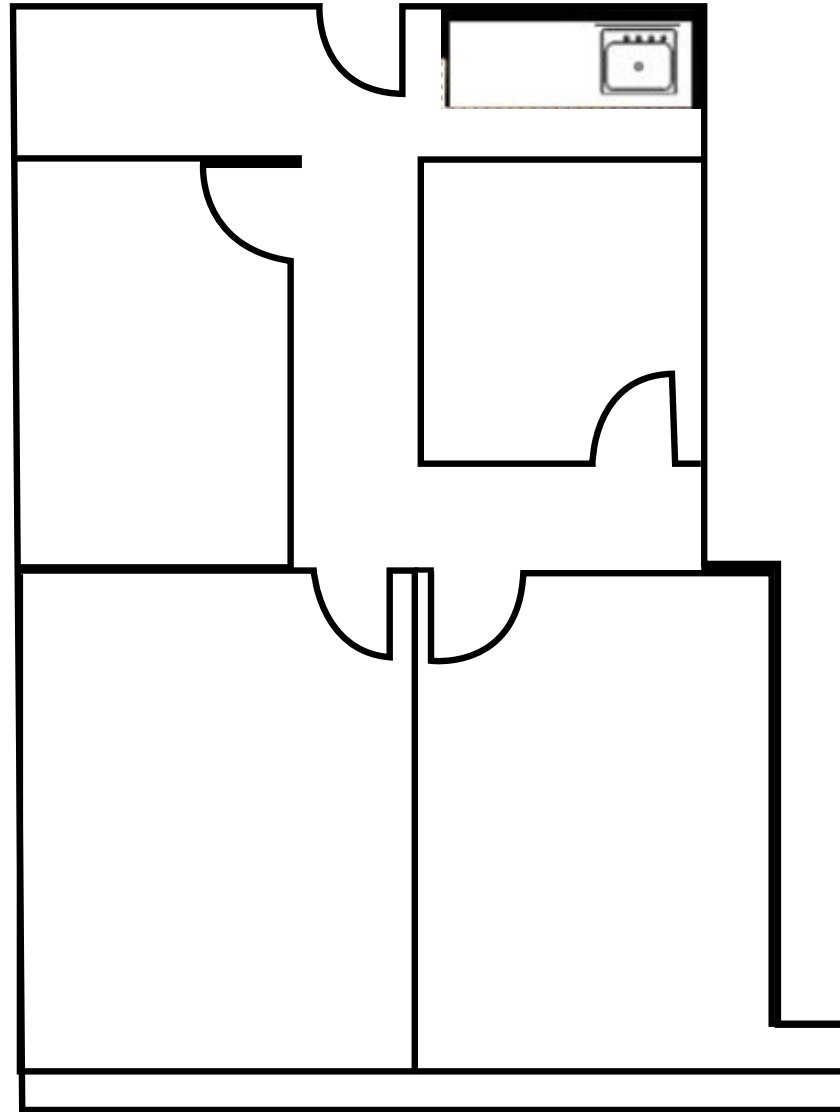


# MEADOWS CORPORATE PARK

Meadows I  
12510 Prosperity Dr, Silver Spring, MD 20904

## THIRD FLOOR

Suite 320 | 1,114 SF



FLOOR PLAN

**Kenneth Fellows**  
kfellows@klnb.com  
301-222-0210

**Robert Pugh**  
rpugh@klnb.com  
301-222-0211

**Keiry Martinez**  
kmartinez@klnb.com  
703-334-5629



# MEADOWS CORPORATE PARK

Meadows I  
12510 Prosperity Dr, Silver Spring, MD 20904

For More Information, Please Contact:

**Kenneth Fellows**

kfellows@klnb.com  
301-222-0210

**Robert Pugh**

rpugh@klnb.com  
301-222-0211

**Keiry Martinez**

kmartinez@klnb.com  
703-334-5629

12435 Park Potomac Ave, Suite 250  
Rockville, MD 20854

[klnb.com](http://klnb.com)



[instagram.com/klnbcre](https://www.instagram.com/klnbcre)



[linkedin.com/company/klnb](https://www.linkedin.com/company/klnb)



[facebook.com/KLNBCRE](https://www.facebook.com/KLNBCRE)

While we have no reason to doubt the accuracy of any of the information supplied, we cannot, and do not, guarantee its accuracy. All information should be independently verified prior to a purchase or lease of the property. We are not responsible for errors, omissions, misuse, or misinterpretation of information contained herein and make no warranty of any kind, express or implied, with respect to the property or any other matters.

