

Flagship High Profile Corner

7th St & H St NW

Up to **30,000 SF Available**
in the heart of the **East End** at
Gallery Pl-Chinatown Metro



CONCEPTUAL RENDERING FOR VISUALIZATION PURPOSES ONLY.

05
H ST NW

Kim Stein
kstein@klnb.com | 202.652.2338

Jennifer Price
jprice@klnb.com | 202.420.7768

Matt Skalet
mskalet@klnb.com | 202.420.7775

klnb



WALK TIME DISTANCE

10 MIN 15 MIN

RADIUS

0.5 MI 1.0 MI

Daytime Population

89,995 179,793 106,806 285,869

Population

17,309 30,244 18,889 53,642

Households

11,095 18,539 12,117 32,107

Average Household Income

\$176,328 \$169,201 \$173,444 \$171,829

TRAFFIC COUNTS

AVERAGE DAILY VOLUME

7th St NW H St NW
12,021 11,905

WALK SCORE Walker's Paradise
99

BIKE SCORE Biker's Paradise
97

NEARBY METRO STATIONS

WITHIN 10 MINUTE WALK TIME (DAILY RIDERSHIP)

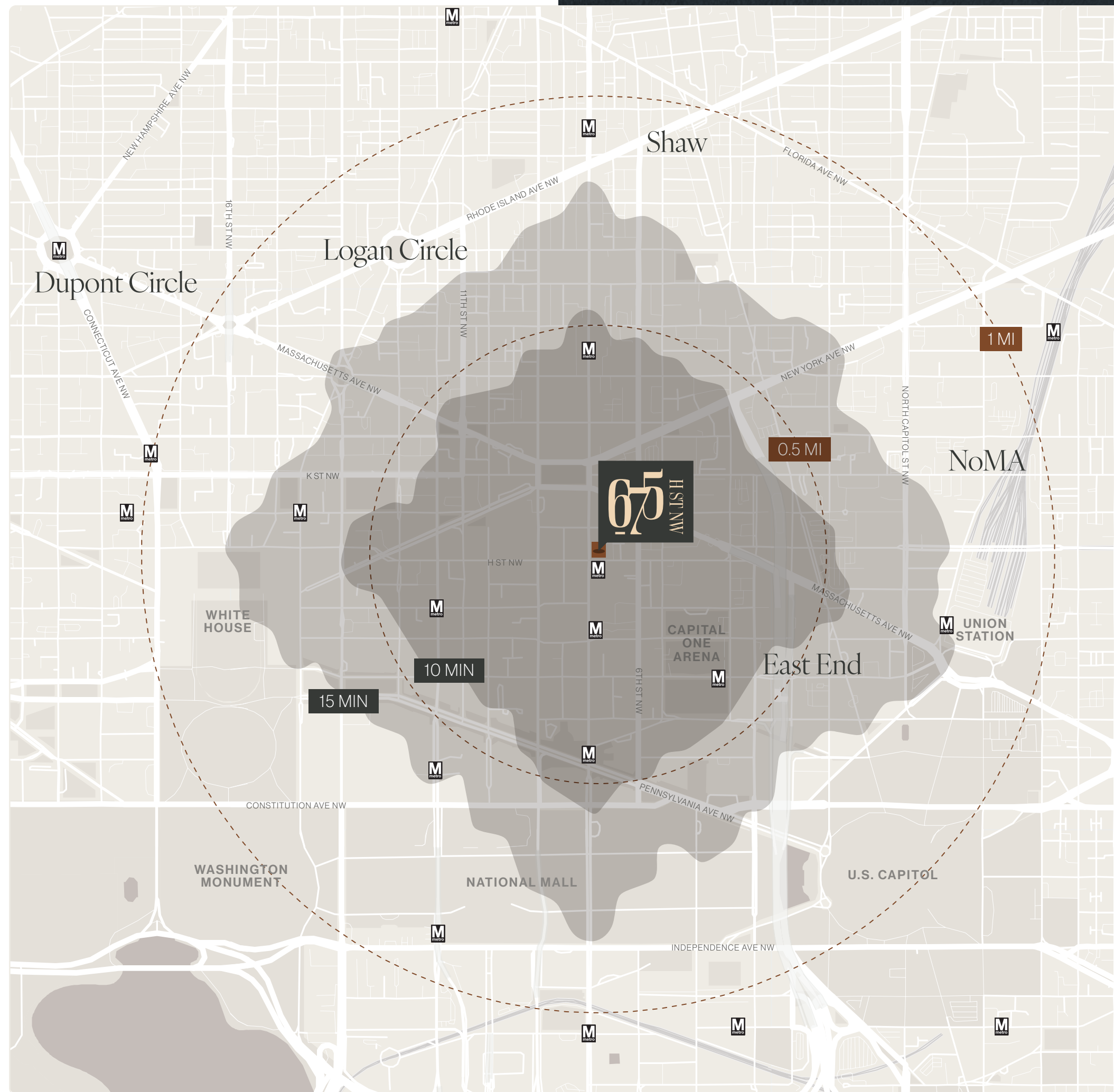
Gallery Pl-Chinatown ●●● 12,138

Judiciary Square ● 2,575

Archives-Navy Memorial-Penn Quarter ●● 4,891

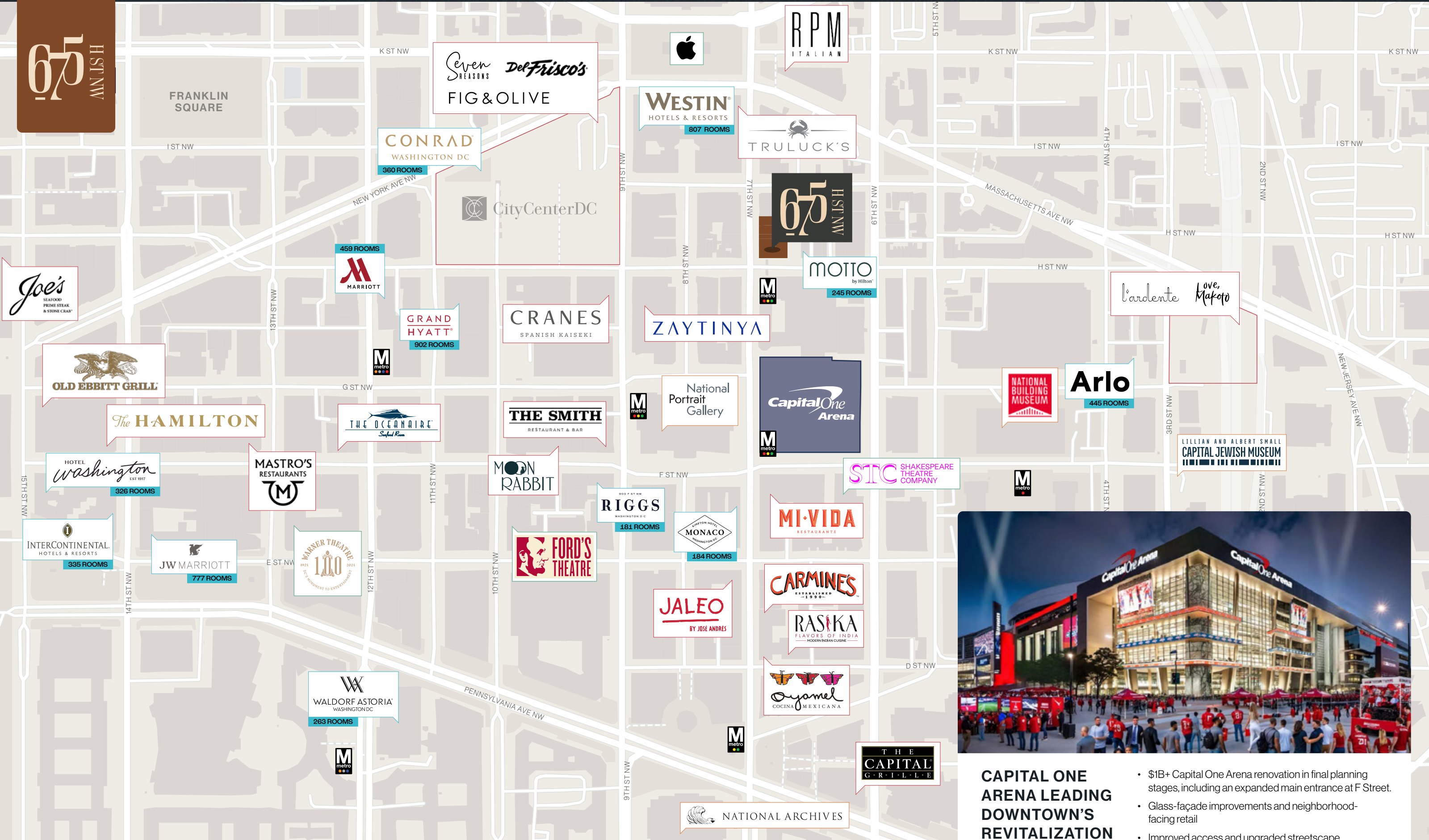
Metro Center ●●●● 11,736

Mt Vernon Sq 7th St-Convention Center ●● 2,708



Demographics & Transit

675 H ST NW



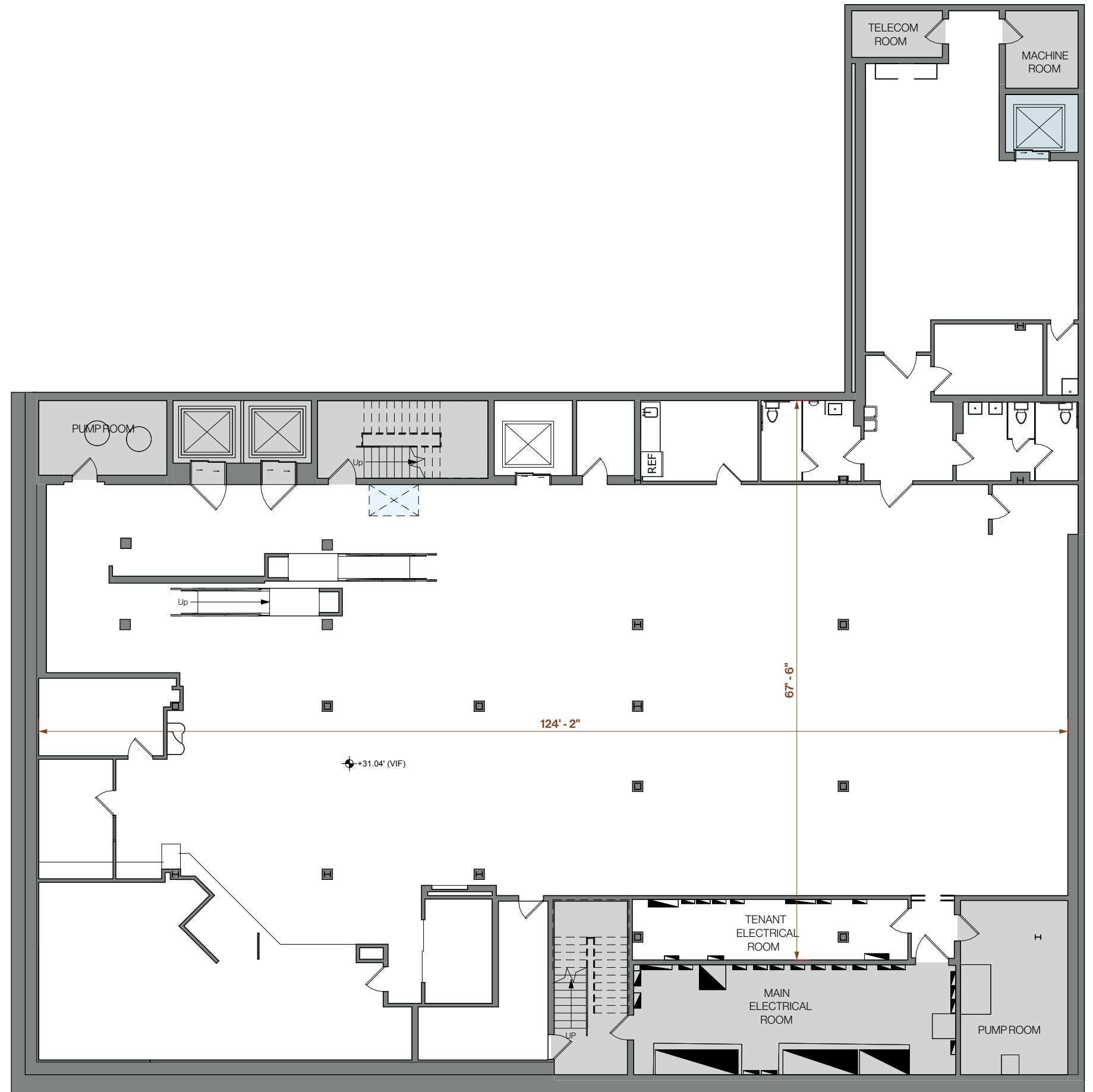
CAPITAL ONE ARENA LEADING DOWNTOWN'S REVITALIZATION

- \$1B+ Capital One Arena renovation in final planning stages, including an expanded main entrance at F Street.
- Glass-façade improvements and neighborhood-facing retail
- Improved access and upgraded streetscape along 6th Street
- Increased security focus surrounding 7th and H Streets intersection

BASEMENT LEVEL

9,449 SF

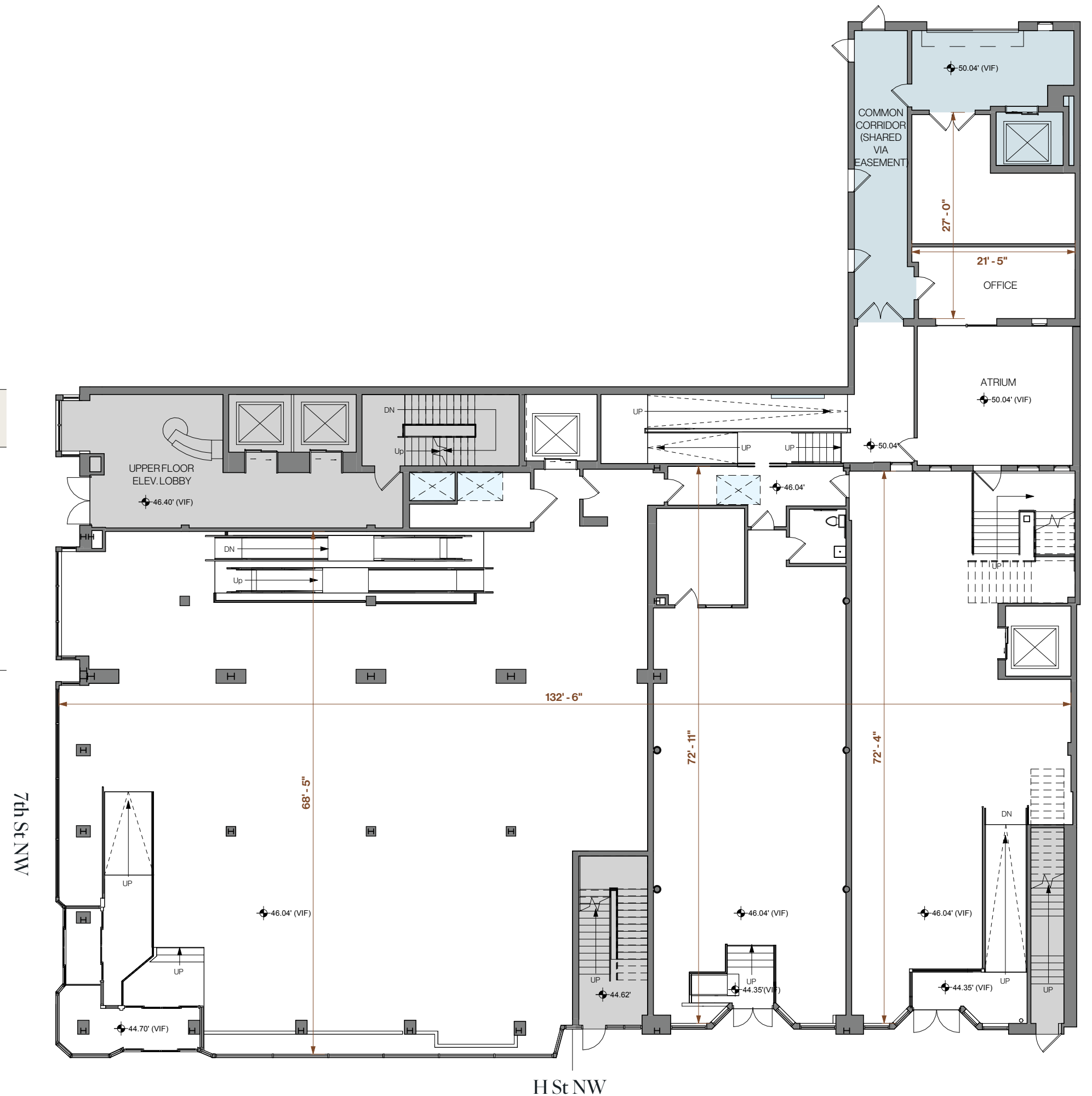
	Area (SF)	Street Frontage	Underside of Slab (Clear)	Slab Req'd	Ventilation Shaft
Basement	9,449	N/A	13'-2" (VARIES)	No	Yes
Ground Floor	10,663	184'-11"	13'-0" (VARIES)	N/A	Yes
Second Floor	10,669	194'-8"	10'-2" - 12'-7" (VARIES)	N/A	Yes
Total	30,781				



GROUND FLOOR

10,663 SF

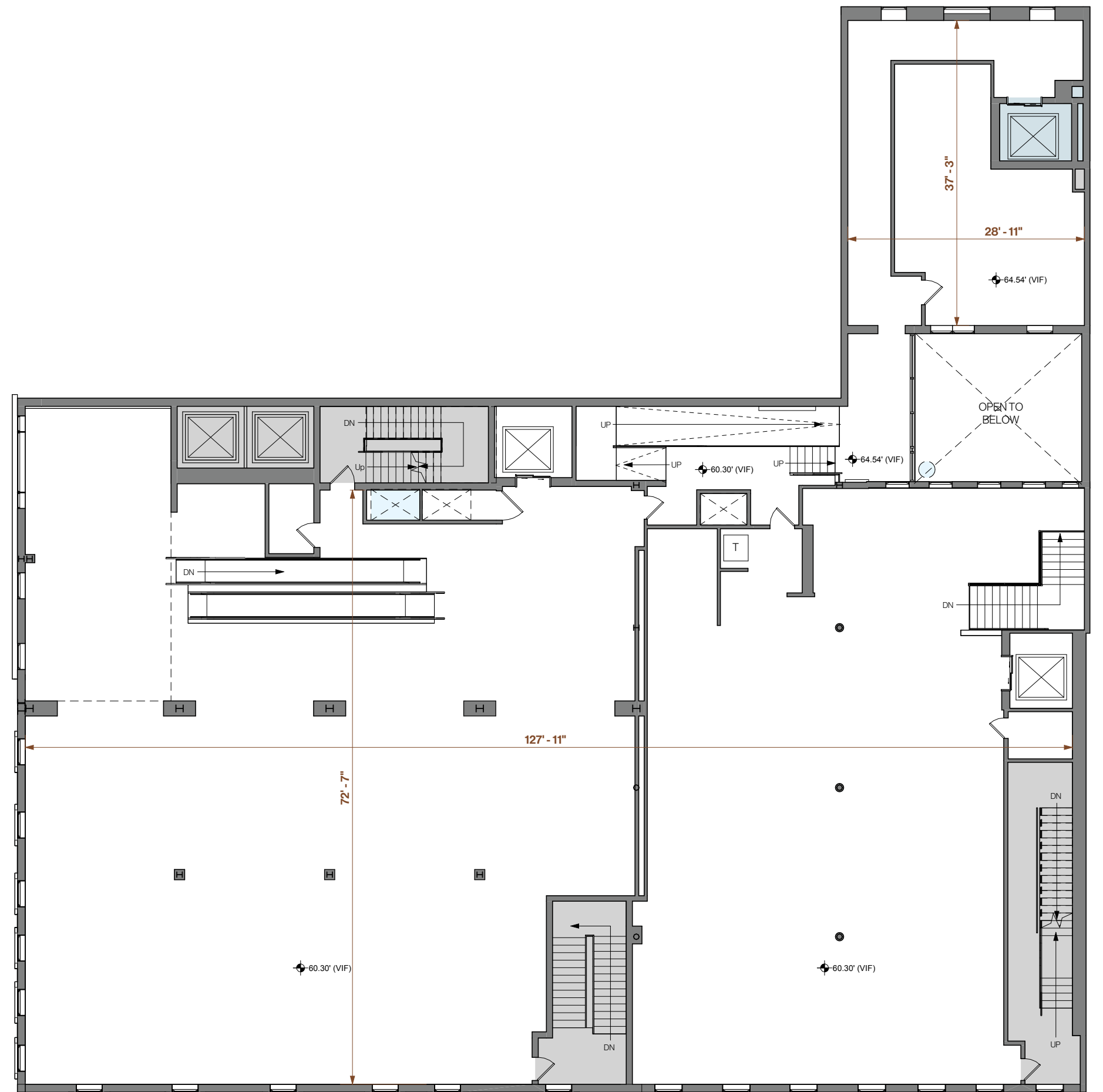
	Area (SF)	Street Frontage	Underside of Slab (Clear)	Slab Req'd	Ventilation Shaft
Basement	9,449	N/A	13'-2" (VARIES)	No	Yes
Ground Floor	10,663	184'-11"	13'-0" (VARIES)	N/A	Yes
Second Floor	10,669	194'-8"	10'-2" - 12'-7" (VARIES)	N/A	Yes
Total	30,781				



SECOND FLOOR

10,669 SF

	Area (SF)	Street Frontage	Underside of Slab (Clear)	Slab Req'd	Ventilation Shaft
Basement	9,449	N/A	13'-2" (VARIES)	No	Yes
Ground Floor	10,663	184'-11"	13'-0" (VARIES)	N/A	Yes
Second Floor	10,669	194'-8"	10'-2" - 12'-7" (VARIES)	N/A	Yes
Total	30,781				



075 H ST NW

FOR LEASING INQUIRIES:

Kim Stein

kstein@klnb.com
202.652.2338

Jennifer Price

jprice@klnb.com
202.420.7768

Matt Skalet

mskalet@klnb.com
202.420.7775

While we have no reason to doubt the accuracy of any of the information supplied, we cannot, and do not, guarantee its accuracy. All information should be independently verified prior to a purchase or lease of the property. We are not responsible for errors, omissions, misuse, or misinterpretation of information contained herein and make no warranty of any kind, express or implied, with respect to the property or any other matters.

[CLICK HERE TO VIEW PROPERTY WEBSITE](#)

1130 Connecticut Ave NW, Suite 600 | Washington, DC 20036

202.375.7500

[klnb.com](#)

[@klnbcre](#)

klnb