



Forbes Center



Industrial/Flex Space for Lease

Lanham, MD 20706

Kenneth Fellows
kfellows@klnb.com
301.222.0210

Robert Pugh
rpugh@klnb.com
301.222.0211

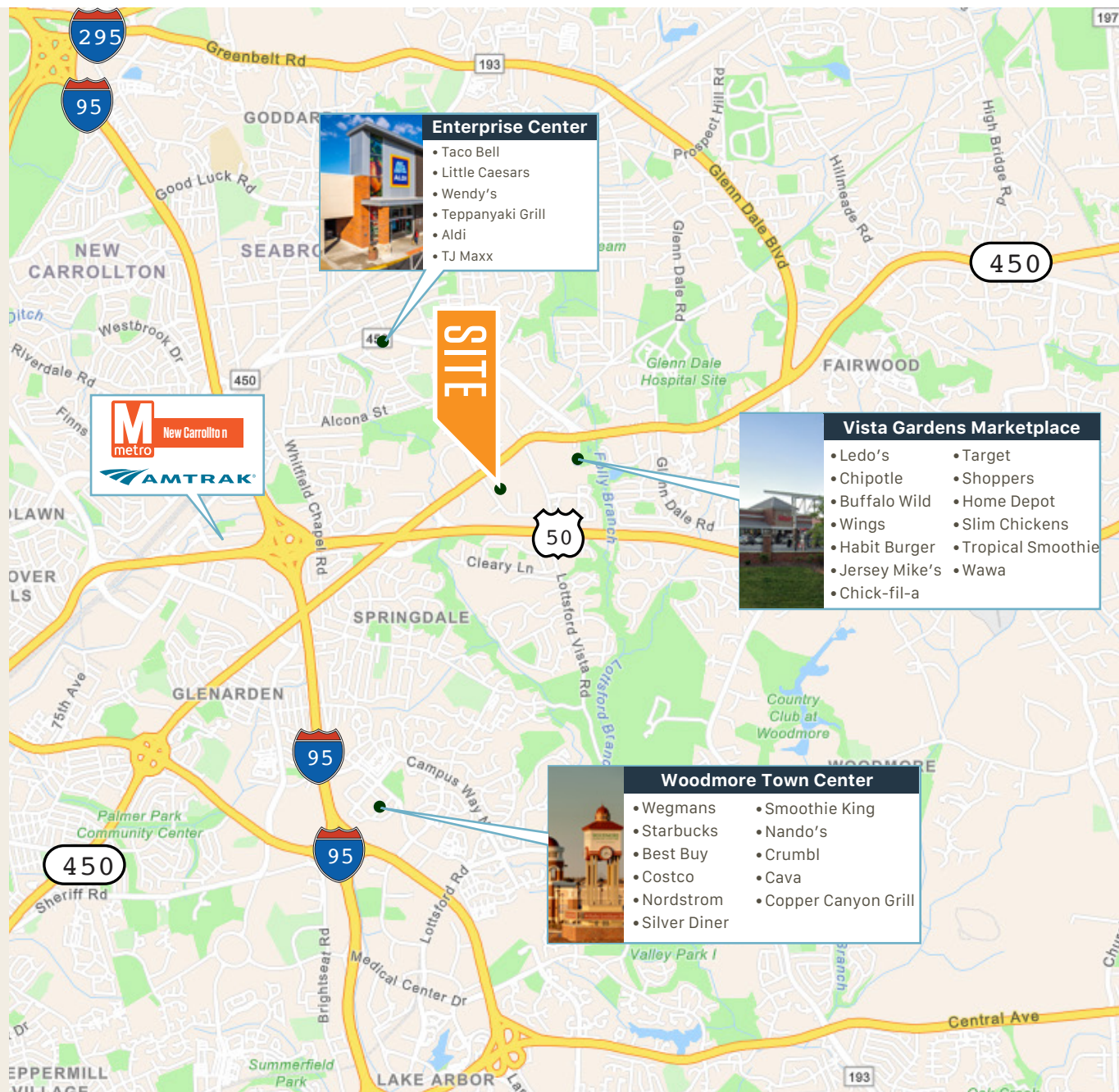
Keiry Martinez
kmartinez@klnb.com
703.334.5629

klnb

Accessibility

Driving Distance

- 2.5 miles to US Route 50
- 3.9 miles to I-495
- 12.8 miles to DC
- 21.5 miles to Annapolis
- 1.2 miles to MD - Route 450
- 2.8 miles to New Carrollton Metro Station
- 5.1 miles to UM Capital Region Medical Center
- 32 miles to Baltimore



4601

Presidents Dr
Lanham, MD 20706

Kenneth Fellows
kfellows@klnb.com
301-222-0210

Robert Pugh
rpugh@klnb.com
301-222-0211

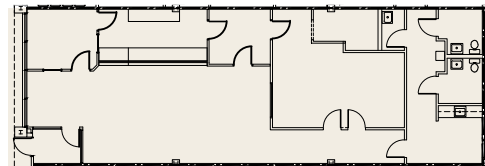
Keiry Martinez
kmartinez@klnb.com
703-334-5629

klnb

4451 Parliament Place

Suite C

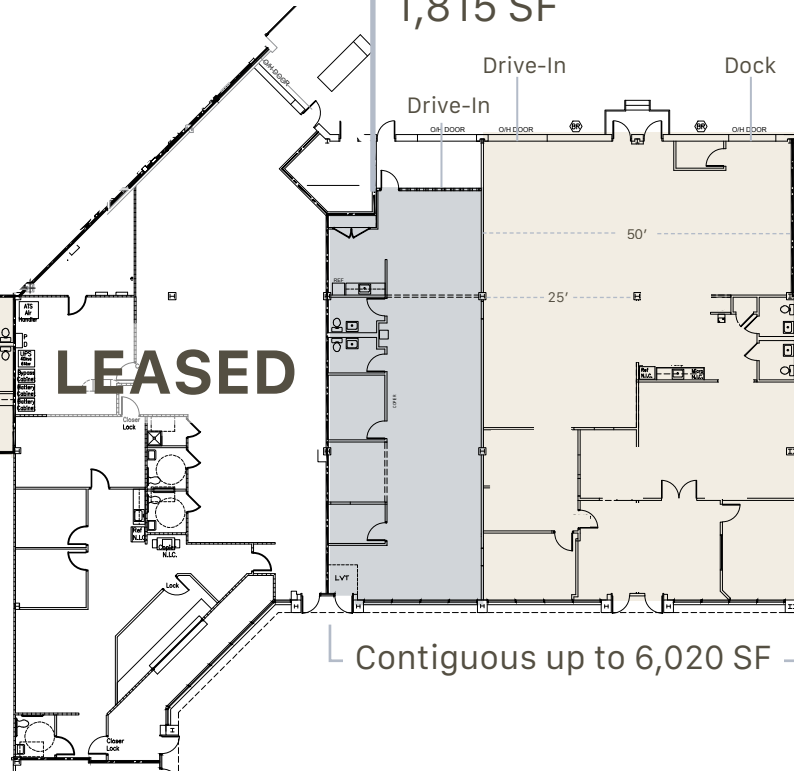
2,100 SF
100% Office Space



Suite J

1,815 SF

Drive-In Drive-In Dock



Suite L

4,205 SF

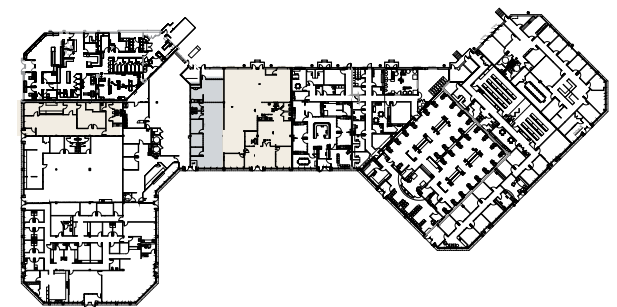
[Click Here for Suite L Video](#)

LEASED

Contiguous up to 6,020 SF

Highlights

- Deck to Bottom Joist: 16'
- Deck to Deck: 18'
- Sprinkler System: Yes
- # of Docks: 1 (Suite L)
- # of Drive-Ins: 2 | Suite J (1) Suite L (1)
- Colum Spacing: 25 feet
- HVAC: Fully Conditioned
- Power:



4451

Parliament Place
Lanham, MD 20706

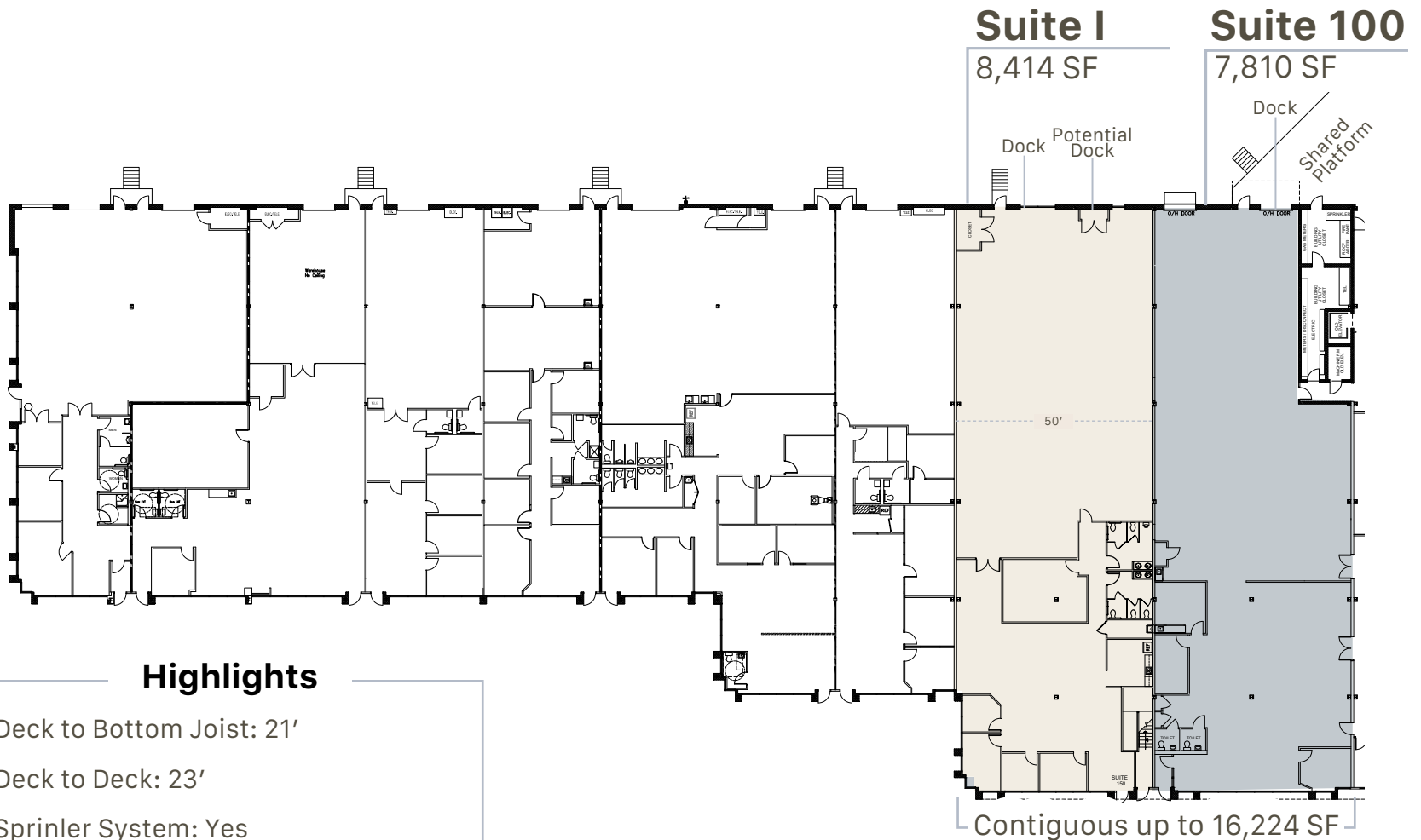
Kenneth Fellows
kfellows@klnb.com
301-222-0210

Robert Pugh
rpugh@klnb.com
301-222-0211

Keiry Martinez
kmartinez@klnb.com
703-334-5629

klnb

4501 Forbes Blvd



Highlights

- Deck to Bottom Joist: 21'
- Deck to Deck: 23'
- Sprinkler System: Yes
- # of Docks: 3 | Suite I (1) Suite 100 (2)
- # of Potential Docks: 1 | Suite I
- Colum Spacing: 25 feet
- HVAC: Fully Conditioned

[Click Here for Suite 100 Video](#)

4501
Forbes Blvd
Lanham, MD 20706

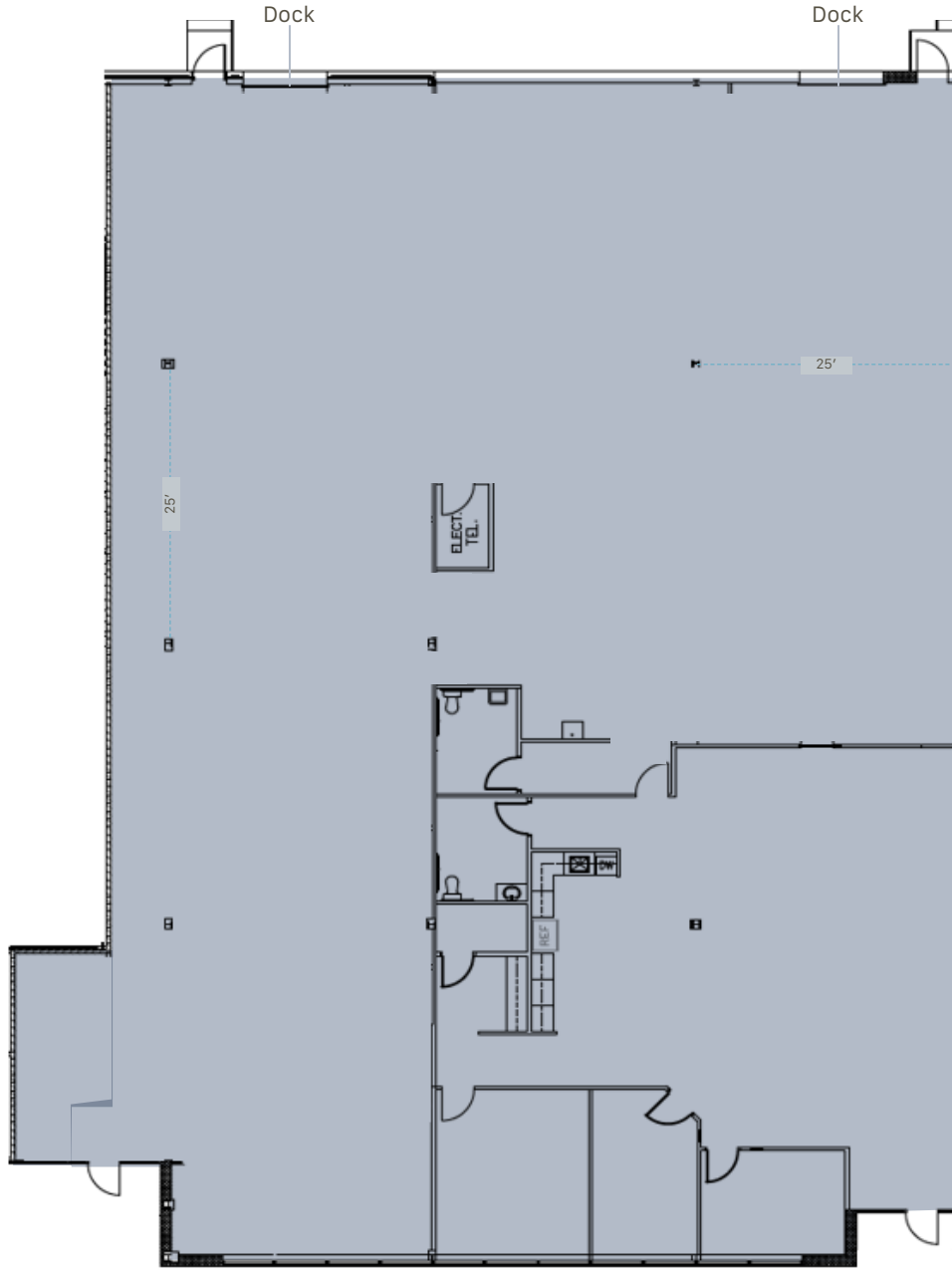
Kenneth Fellows
kfellows@klnb.com
301-222-0210

Robert Pugh
rpugh@klnb.com
301-222-0211

Keiry Martinez
kmartinez@klnb.com
703-334-5629

klnb

4385 Nicole Drive

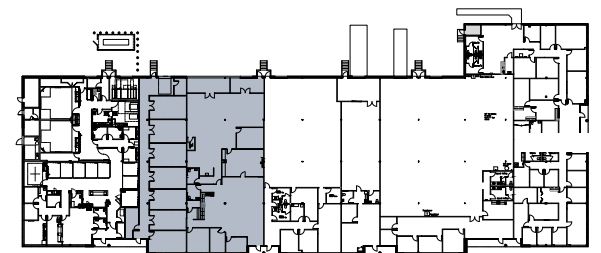


Demo Plan

Suite 4385
9,383 SF

Highlights

- Deck to Bottom Joist: 14'
- Deck to Deck: 16'
- Sprinkler System: Yes
- # of Docks: 2
- Column Spacing: 25 feet
- HVAC: Fully Conditioned
- Power:



4451-
4485

Nicole Drive
Lanham, MD 20706

Kenneth Fellows
kfellows@klnb.com
301-222-0210

Robert Pugh
rpugh@klnb.com
301-222-0211

Keiry Martinez
kmartinez@klnb.com
703-334-5629

klnb

4451-4485 Nicole Drive

Contiguous up to 13,296 SF

Suite 4485
5,804 SF

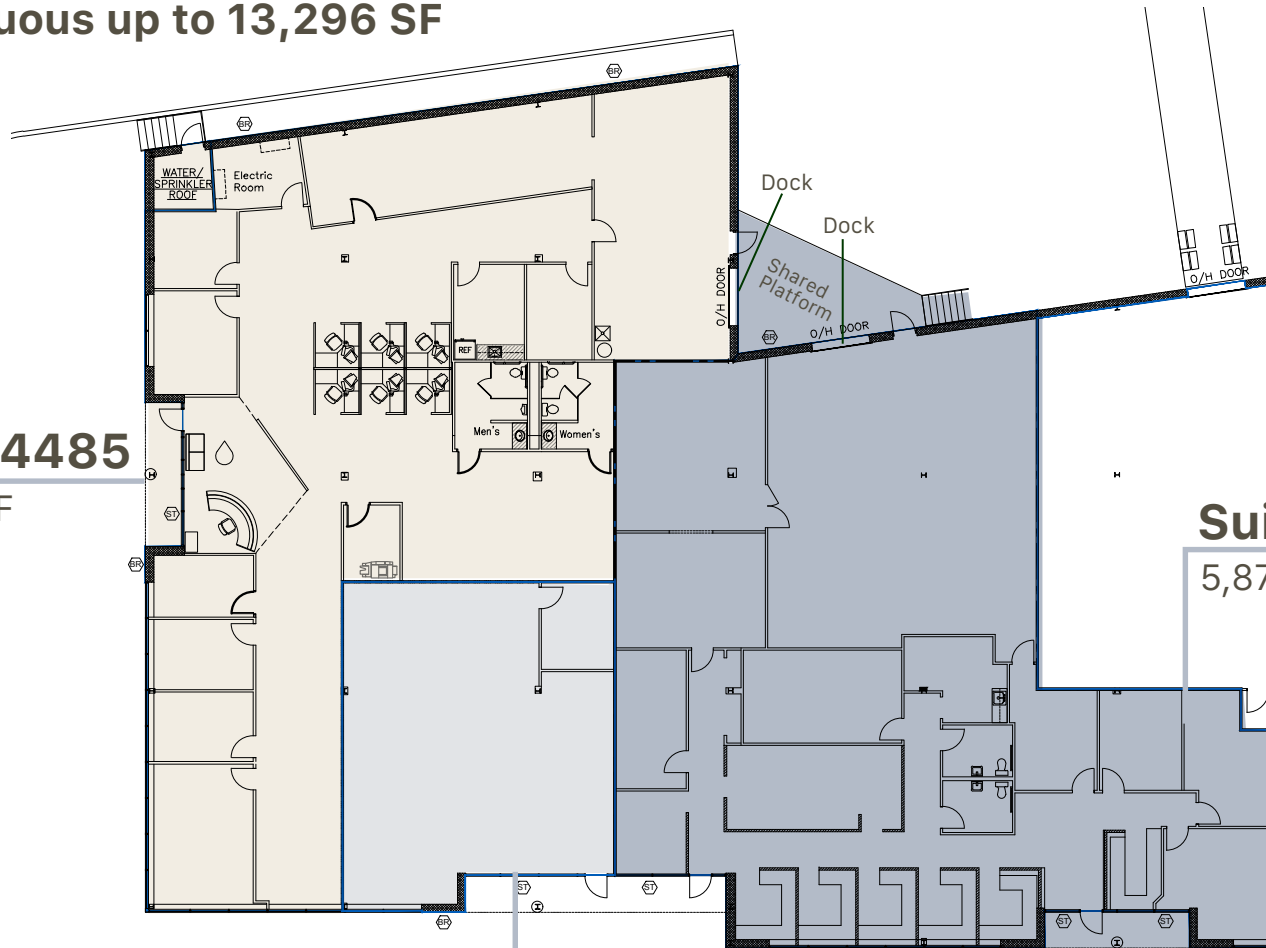
Suite 4481
5,873 SF

Suite 4484
1,619 SF

Highlights

Sprinkler System: Yes

of Docks: 2 | Suite 4485 (1) Suite 4481 (1)



4451-
4485

Nicole Drive
Lanham, MD 20706

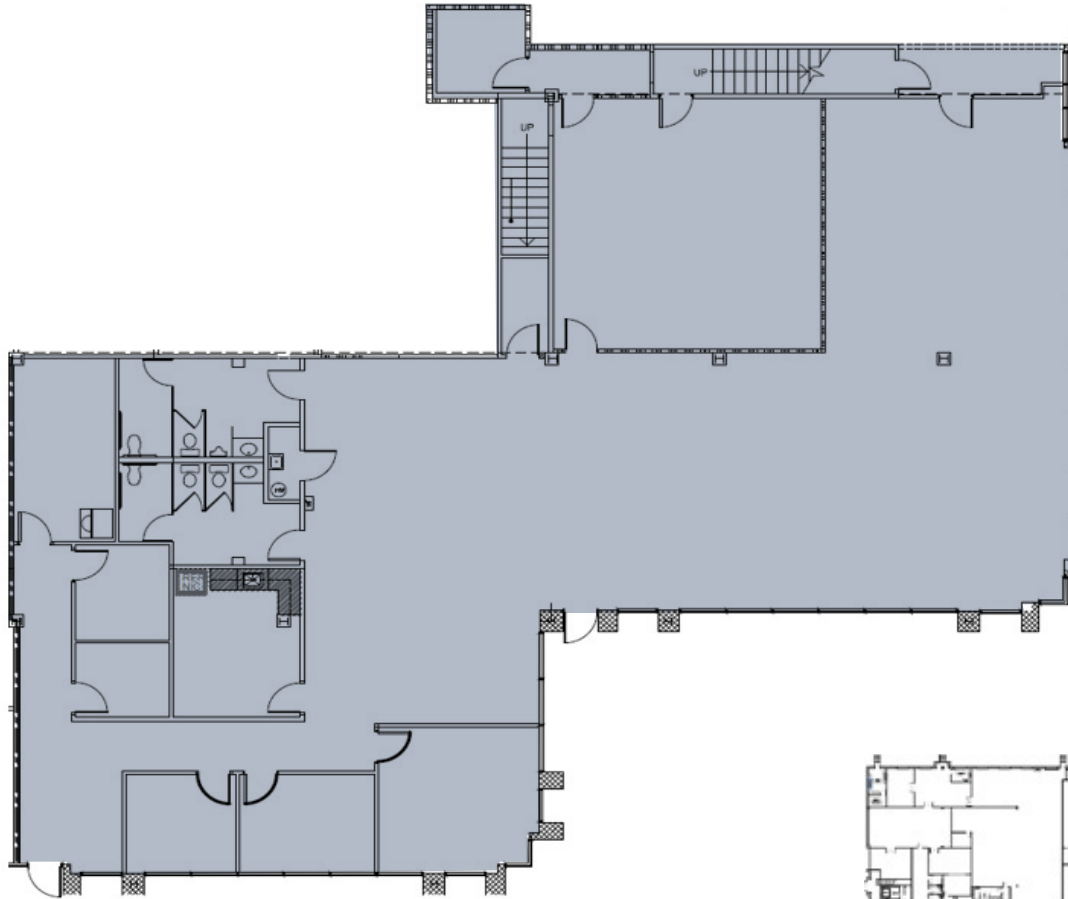
Kenneth Fellows
kfellows@klnb.com
301-222-0210

Robert Pugh
rpugh@klnb.com
301-222-0211

Keiry Martinez
kmartinez@klnb.com
703-334-5629

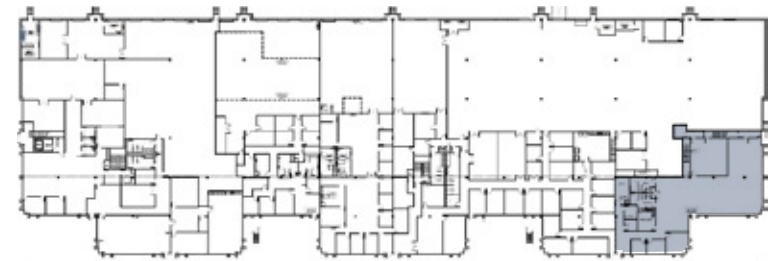
klnb

10123 Senate Drive



Suite 10123
5,579 SF

[Click Here for Suite 10123 Video](#)



10123

Senate Drive
Lanham, MD 20706

Kenneth Fellows
kfellows@klnb.com
301-222-0210

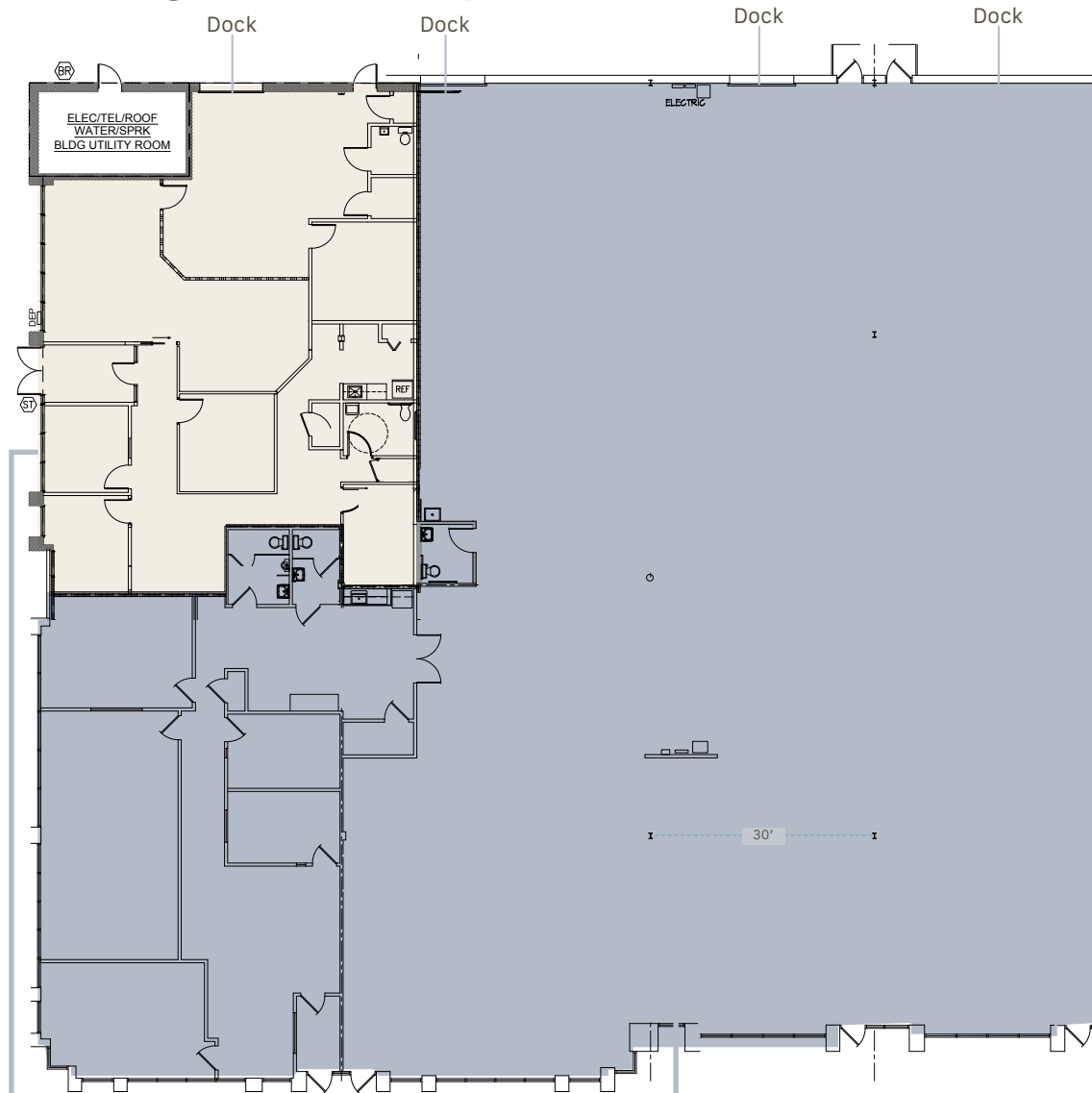
Robert Pugh
rpugh@klnb.com
301-222-0211

Keiry Martinez
kmartinez@klnb.com
703-334-5629

klnb

4611 Assembly Drive

Contiguous up to 16,183 SF



Suite A

2,866 SF

Suite D

13,317 SF

Highlights

Deck to Bottom Joist: 16'

Deck to Deck: 18'

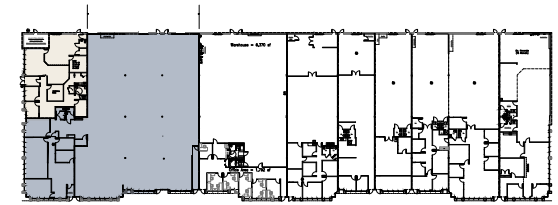
Sprinkler System: Yes

of Docks: 4 | Suite A (1) Suite D (3)

of Potential Docks: 1 | Suite I

Column Spacing: 30 feet

HVAC: Fully Conditioned



4611

Assembly Drive
Lanham, MD 20706

Kenneth Fellows
kfellows@klnb.com
301-222-0210

Robert Pugh
rpugh@klnb.com
301-222-0211

Keiry Martinez
kmartinez@klnb.com
703-334-5629

klnb



Forbes Center

Kenneth Fellows
kfellows@klnb.com
301.222.0210

Robert Pugh
rpugh@klnb.com
301.222.0211

Keiry Martinez
kmartinez@klnb.com
703.334.5629

klnb

12435 Park Potomac Ave
Suite 250
Rockville, MD 20854

301-222-0200
klnb.com

[f](#) [in](#) [@](#) /klnbcre

While we have no reason to doubt the accuracy of any of the information supplied, we cannot, and do not, guarantee its accuracy. All information should be independently verified prior to a purchase or lease of the property. We are not responsible for errors, omissions, misuse, or misinterpretation of information contained herein and make no warranty of any kind, express or implied, with respect to the property or any other matters.