

# RANDOLPH SHOPPING CENTER

12255 Nebel Street, Rockville, MD 20852  
Montgomery County



## PROPERTY INFORMATION

- Suite 12261 | 4,016 SF
- Suite 12271 | 1,650 SF
- Lower Level Industrial Available
- Parking: 3.1/1,000
- Ceiling Height: 13 foot clear (14 to deck)
- Randolph SC sits in a vibrant retail corridor with convenient access to Rockville Pike (Rt. 355)
- Georgetown Rd: 0.2 Miles
- Rockville Pike: 0.5 Miles
- I-270: 2 Miles

LEASED BY:

**klnb**

**Kenneth Fellows**  
301-222-0210  
kfellows@klnb.com

**Robert E. Pugh**  
301-222-0211  
rpugh@klnb.com

**Keiry Martinez**  
703-334-5629  
kmartinez@klnb.com

12435 Park Potomac Ave, Suite 250  
Rockville, MD 20854  
[klnb.com](http://klnb.com)

# RANDOLPH SHOPPING CENTER

12255 Nebel Street, Rockville, MD 20852  
Montgomery County

MARKET AERIAL



**Kenneth Fellows**  
kfellows@klnb.com  
301-222-0210

**Robert Pugh**  
rpugh@klnb.com  
301-222-0211

**Keiry Martinez**  
kmartinez@klnb.com  
703-334-5629

12435 Park Potomac Ave, Suite 250  
Rockville MD, 20854  
klnb.com

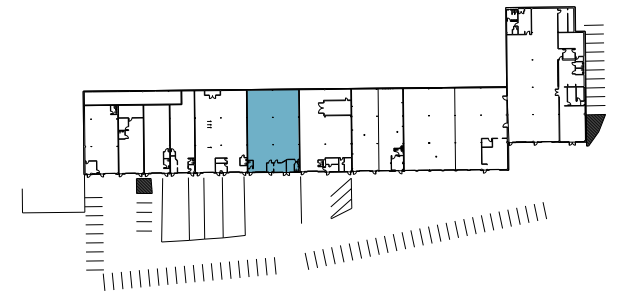
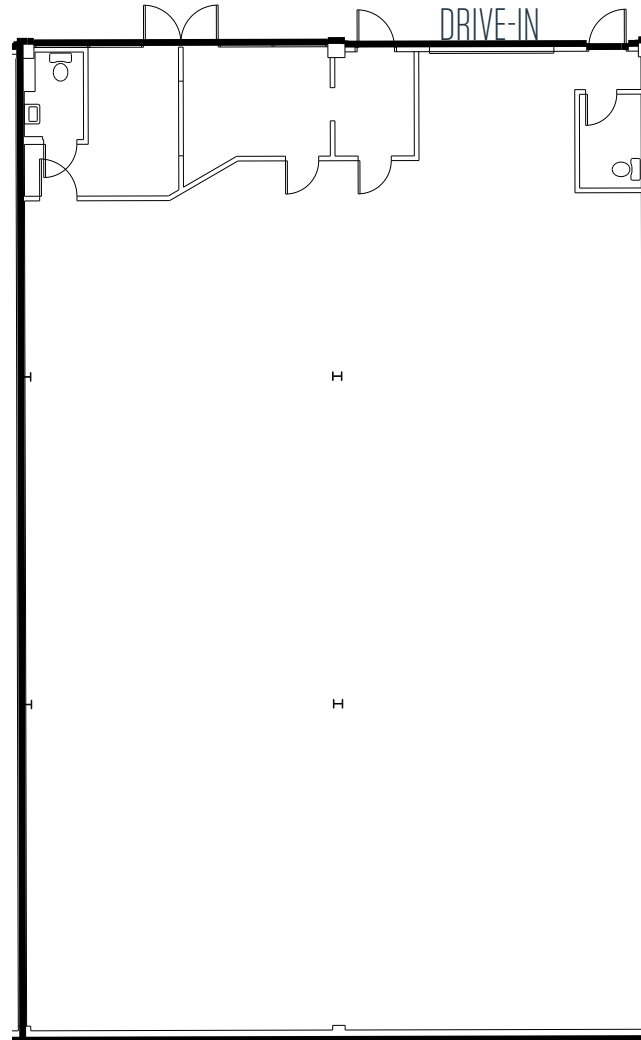


# RANDOLPH SHOPPING CENTER

12255 Nebel Street, Rockville, MD 20852  
Montgomery County

## FLOOR PLAN

**SUITE 12261**  
4,016 SF



**Kenneth Fellows**  
kfellows@klnb.com  
301-222-0210

**Robert Pugh**  
rpugh@klnb.com  
301-222-0211

**Keiry Martinez**  
kmartinez@klnb.com  
703-334-5629

12435 Park Potomac Ave, Suite 250  
Rockville MD, 20854  
klnb.com



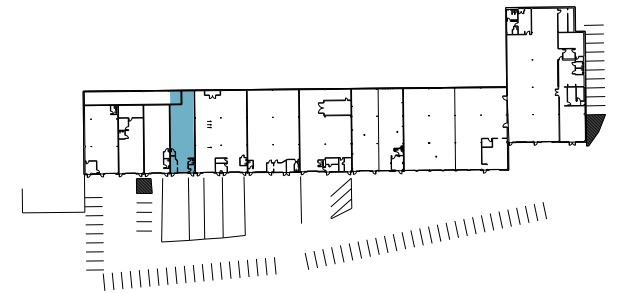
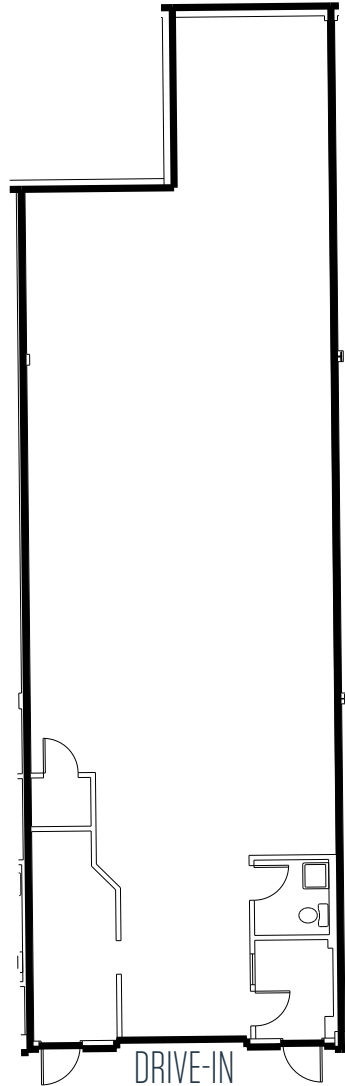
# RANDOLPH SHOPPING CENTER

12255 Nebel Street, Rockville, MD 20852  
Montgomery County

## FLOOR PLAN

**SUITE 12271**

1,650 SF



**Kenneth Fellows**  
kfellows@klnb.com  
301-222-0210

**Robert Pugh**  
rpugh@klnb.com  
301-222-0211

**Keiry Martinez**  
kmartinez@klnb.com  
703-334-5629

12435 Park Potomac Ave, Suite 250  
Rockville MD, 20854  
klnb.com



# RANDOLPH SHOPPING CENTER

12255 Nebel Street, Rockville, MD 20852

Montgomery County

[CLICK TO VIEW PROPERTY WEBSITE](#)

**For More Information, Please Contact:**

**Kenneth Fellows**  
kfellows@klnb.com  
301-222-0210

**Robert Pugh**  
rpugh@klnb.com  
301-222-0211

**Keiry Martinez**  
kmartinez@klnb.com  
703-334-5629



While we have no reason to doubt the accuracy of any of the information supplied, we cannot, and do not, guarantee its accuracy. All information should be independently verified prior to a purchase or lease of the property. We are not responsible for errors, omissions, misuse, or misinterpretation of information contained herein and make no warranty of any kind, express or implied, with respect to the property or any other matters.

12435 Park Potomac Ave, Suite 250  
Rockville MD, 20854  
klnb.com

