



AVAILABILITY

Suite 215: 4,534 SF

PROPERTY FACTS

- Year Built: 2004
- Building Height: 3 Stories
- Building Size: 27,800 SF
- Building Class: B
- Parking: 32 Surface

KENNETH FELLOWS

kfellows@klnb.com | 301-222-0210

ROBERT PUGH

rpugh@klnb.com | 301-222-0211

KEIRY MARTINEZ

kmartinez@klnb.com | 703-334-5629

MARKET

MARKET SQUARE CENTER

506 MAIN ST, GAITHERSBURG, MD 20878, MONTGOMERY COUNTY



NORTH POTOMAC

KENNETH FELLOWS

kfellows@klnb.com | 301-222-0210

ROBERT PUGH

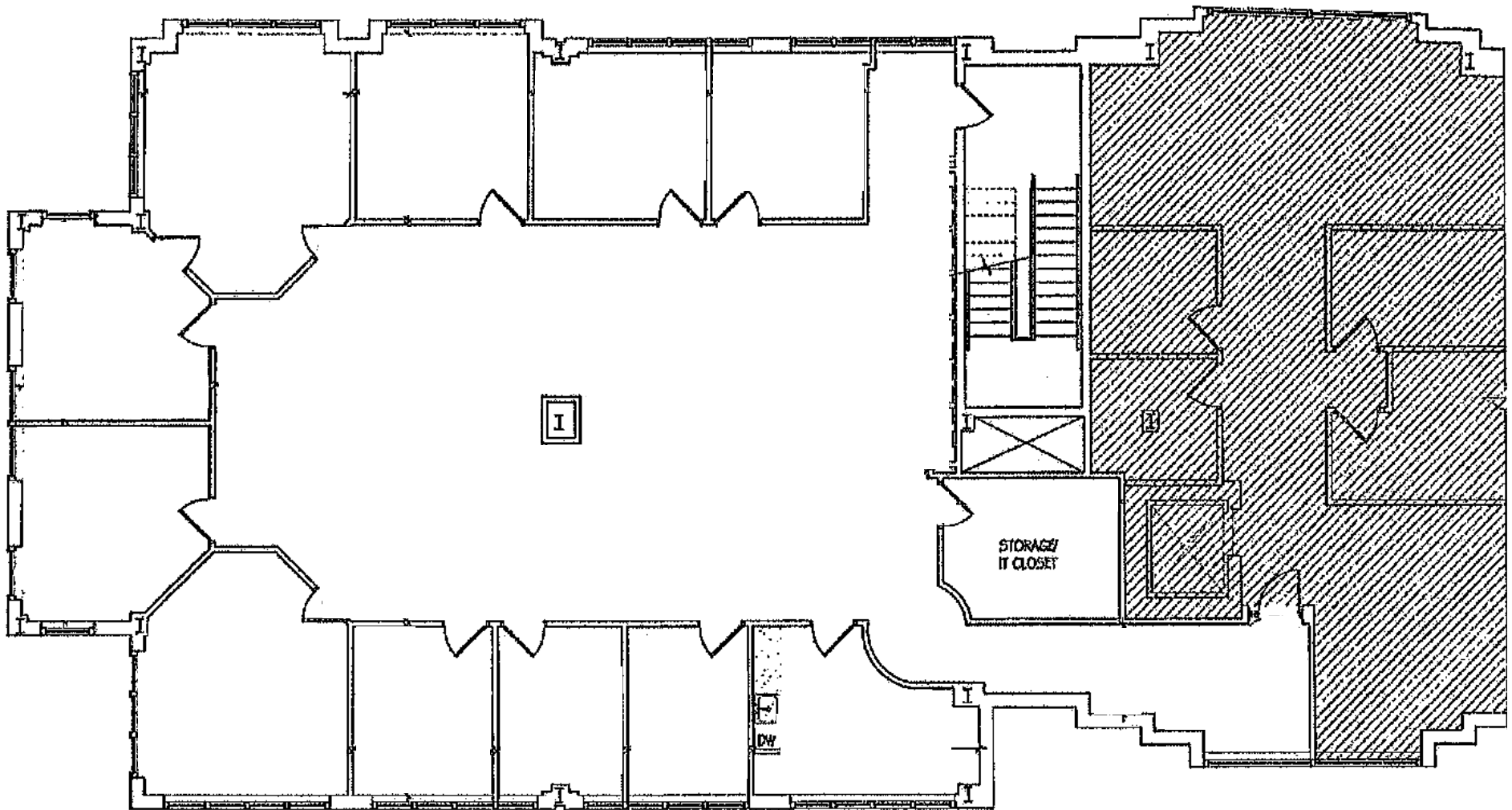
rpugh@klnb.com | 301-222-0211

KEIRY MARTINEZ

kmartinez@klnb.com | 703-334-5629



SUITE 215 | 4,534 SF



KENNETH FELLOWS

kfellows@klnb.com | 301-222-0210

ROBERT PUGH

rpugh@klnb.com | 301-222-0211

KEIRY MARTINEZ

kmartinez@klnb.com | 703-334-5629

SITE AERIAL

MARKET SQUARE CENTER

506 MAIN ST, GAITHERSBURG, MD 20878, MONTGOMERY COUNTY



KENNETH FELLOWS

kfellows@klnb.com | 301-222-0210

ROBERT PUGH

rpugh@klnb.com | 301-222-0211

KEIRY MARTINEZ

kmartinez@klnb.com | 703-334-5629





MARKET SQUARE CENTER

506 MAIN ST, GAITHERSBURG, MD 20878, MONTGOMERY COUNTY

FOR MORE INFORMATION, PLEASE CONTACT:

KENNETH FELLOWS

kfellows@klnb.com
301-222-0210

ROBERT PUGH

rpugh@klnb.com
301-222-0211

KEIRY MARTINEZ

kmartinez@klnb.com
703-334-5629

12435 Park Potomac Ave, Suite 250, Rockville, MD, 20854

.....

klnb.com



[instagram.com/klnbcre](https://www.instagram.com/klnbcre)



[linkedin.com/company/klnb](https://www.linkedin.com/company/klnb)



[facebook.com/KLNBCRE](https://www.facebook.com/KLNBCRE)

CLICK TO VIEW PROPERTY WEBSITE

While we have no reason to doubt the accuracy of any of the information supplied, we cannot, and do not, guarantee its accuracy. All information should be independently verified prior to a purchase or lease of the property. We are not responsible for errors, omissions, misuse, or misinterpretation of information contained herein and make no warranty of any kind, express or implied, with respect to the property or any other matters.