

CRANBERRY BUSINESS PARK

1003, 1009, 1007-1011, 1015 Old Philadelphia Road
Aberdeen, MD 21001 | Harford County



PROPERTY HIGHLIGHTS:

- **Total SF Available:** 6,000 - 130,250 SF
- **Max Contiguous:** 48,000 SF
- **Clear Height:** 19' - 24'
- **Loading:** Dock and drive-In loading
- **Sprinkler:** Wet
- **Lighting:** LED
- **Zoning:** M2 - Heavy Industrial
- **Access:** Easy access to all points via Route 40 and I-95

Christopher Wright
cwright@klnb.com
443-914-2600

Ben Brooks
bbrooks@klnb.com
443-632-2048

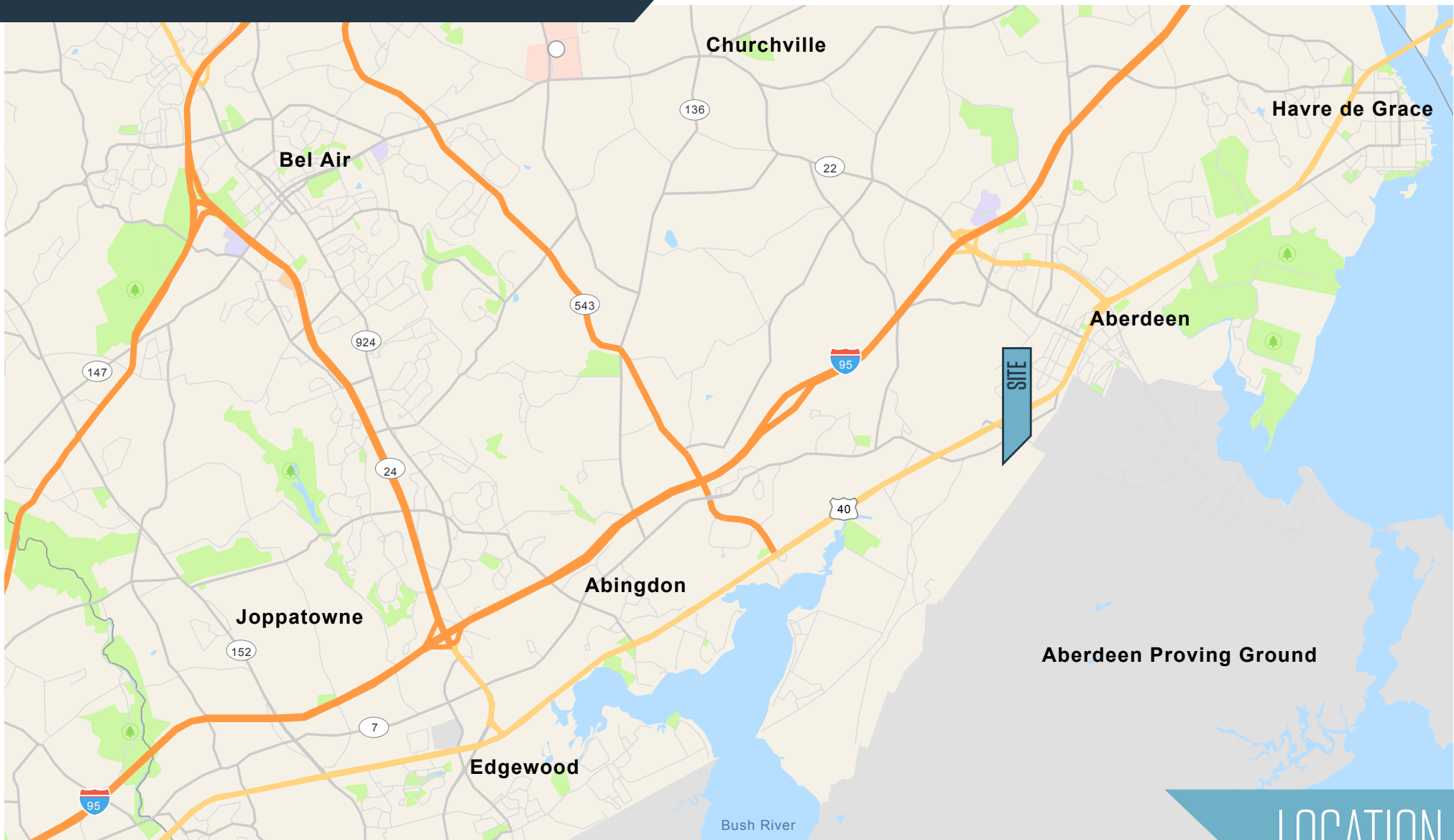
Peter Dudley
pdudley@klnb.com
443-632-2064

100 West Road, Suite 505
Baltimore, MD 21204
klnb.com

NAIklnb

CRANBERRY BUSINESS PARK

1003, 1009, 1007-1011, 1015 Old Philadelphia Road
Aberdeen, MD 21001 | Harford County



LOCATION

Christopher Wright
cwright@klnb.com
443-914-2600

Ben Brooks
bbrooks@klnb.com
443-632-2048

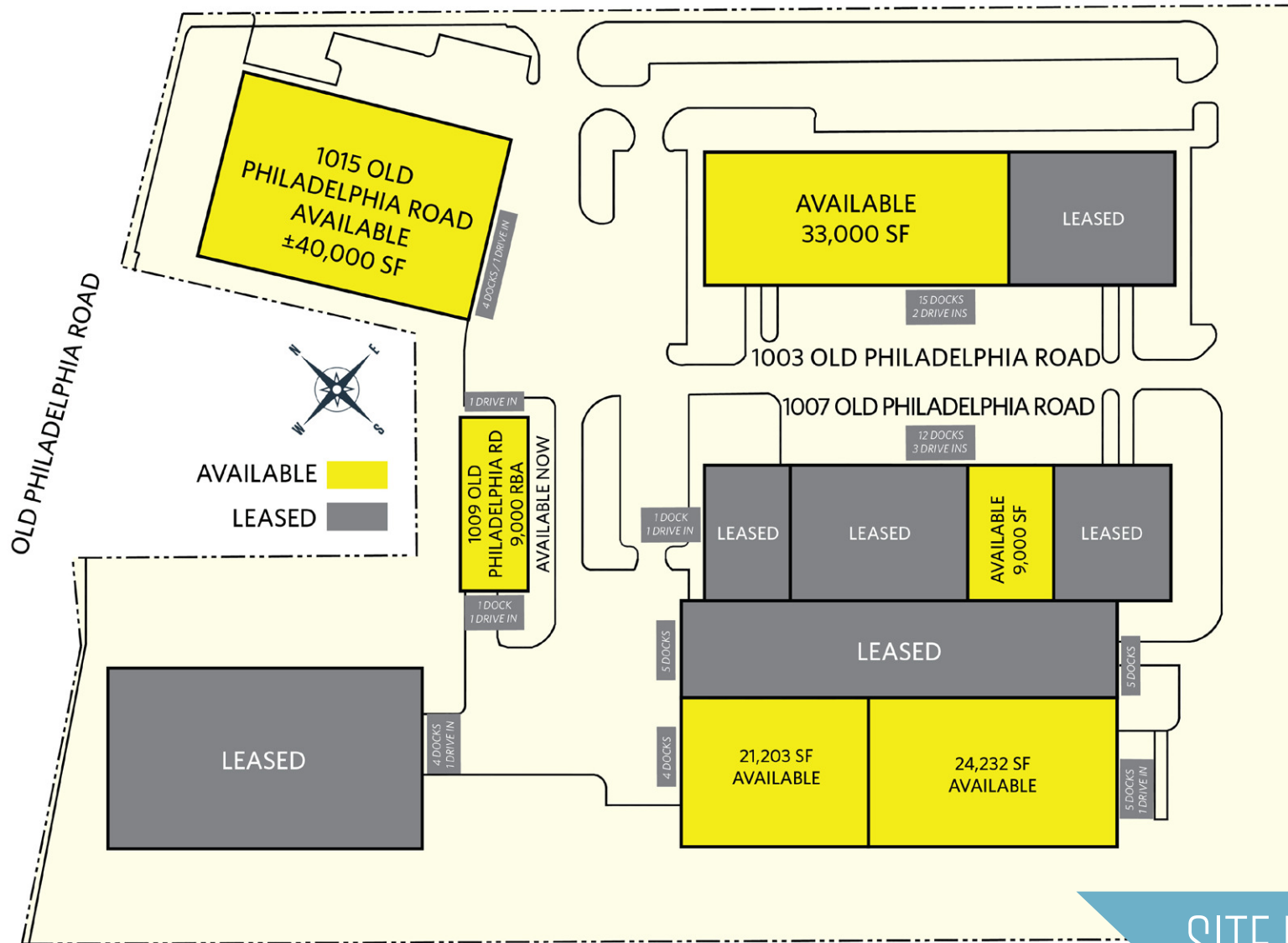
Peter Dudley
pdudley@klnb.com
443-632-2064

100 West Road, Suite 505
Baltimore, MD 21204
klnb.com



CRANBERRY BUSINESS PARK

1003, 1009, 1007-1011, 1015 Old Philadelphia Road
Aberdeen, MD 21001 | Harford County



SITE PLAN

Christopher Wright
cwright@klnb.com
443-914-2600

Ben Brooks
bbrooks@klnb.com
443-632-2048

Peter Dudley
pdudley@klnb.com
443-632-2064

100 West Road, Suite 505
Baltimore, MD 21204
klnb.com



CRANBERRY BUSINESS PARK

1003, 1009, 1007-1011, 1015 Old Philadelphia Road
Aberdeen, MD 21001 | Harford County



1003 FLOOR PLAN

Christopher Wright
cwright@klnb.com
443-914-2600

Ben Brooks
bbrooks@klnb.com
443-632-2048

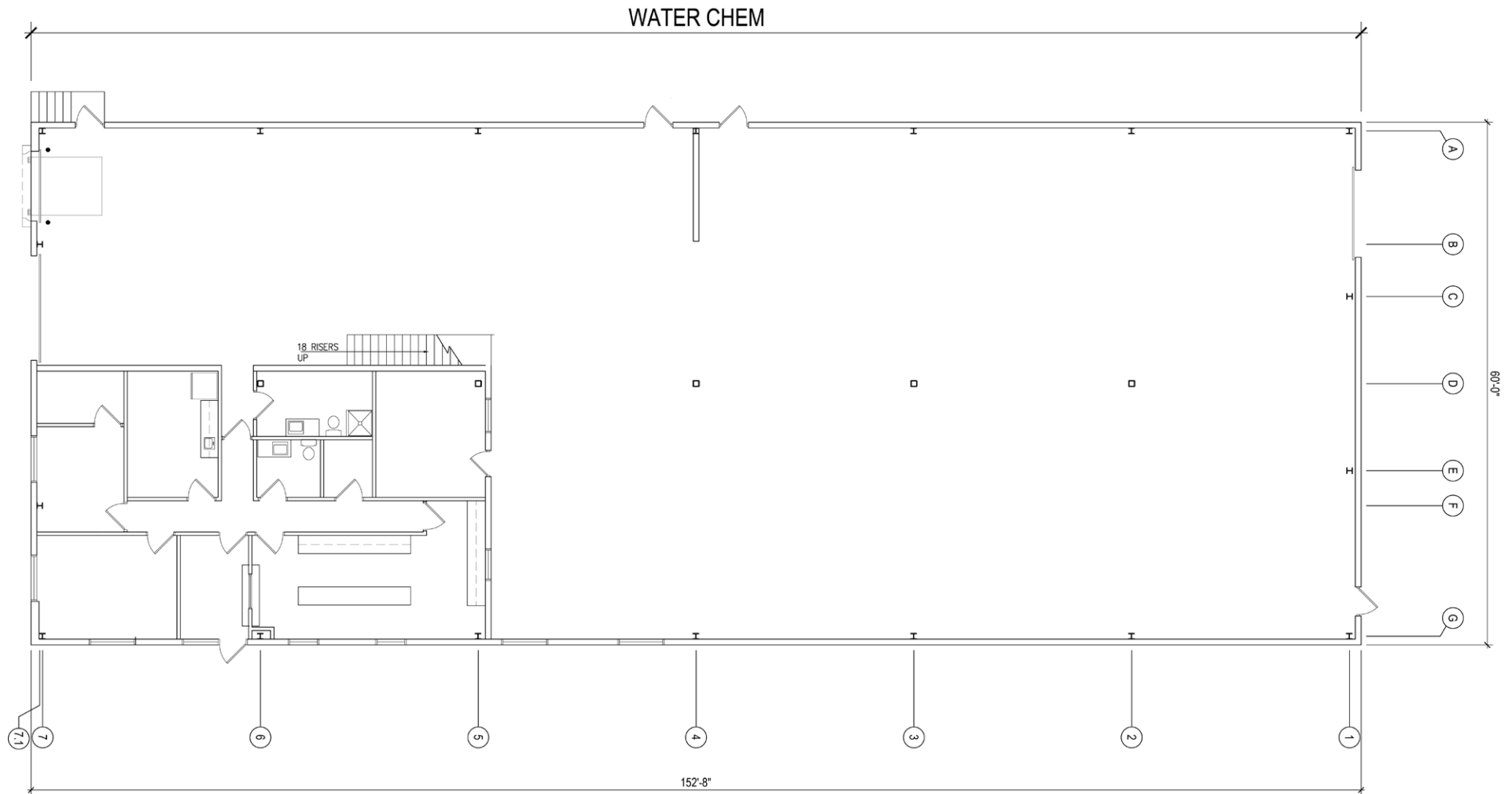
Peter Dudley
pdudley@klnb.com
443-632-2064

100 West Road, Suite 505
Baltimore, MD 21204
klnb.com



CRANBERRY BUSINESS PARK

1003, 1009, 1007-1011, 1015 Old Philadelphia Road
Aberdeen, MD 21001 | Harford County



1009 FLOOR PLAN

Christopher Wright
cwright@klnb.com
443-914-2600

Ben Brooks
bbrooks@klnb.com
443-632-2048

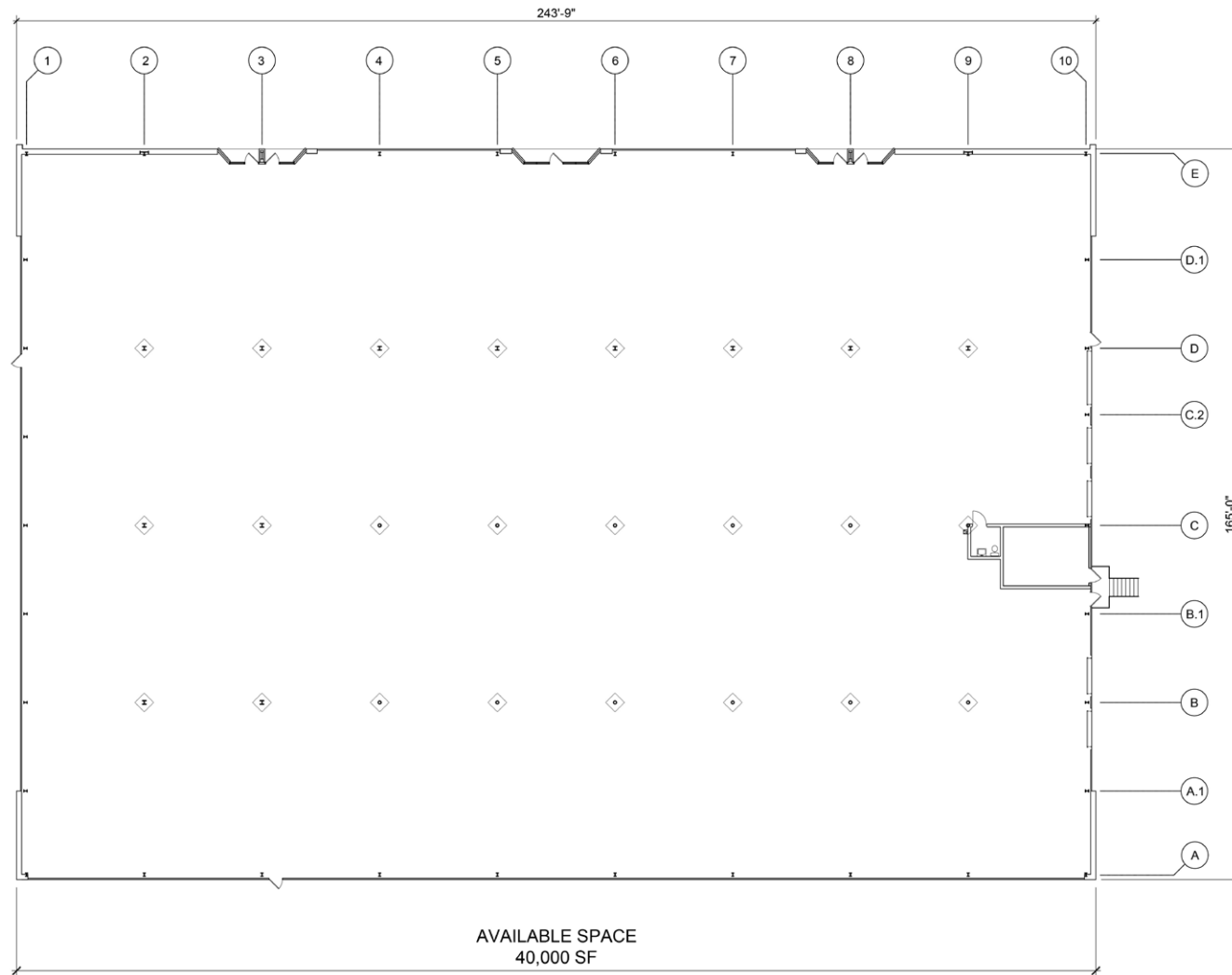
Peter Dudley
pdudley@klnb.com
443-632-2064

100 West Road, Suite 505
Baltimore, MD 21204
klnb.com



CRANBERRY BUSINESS PARK

1003, 1009, 1007-1011, 1015 Old Philadelphia Road
Aberdeen, MD 21001 | Harford County



1015 FLOOR PLAN

Christopher Wright
cwright@klnb.com
443-914-2600

Ben Brooks
bbrooks@klnb.com
443-632-2048

Peter Dudley
pdudley@klnb.com
443-632-2064

100 West Road, Suite 505
Baltimore, MD 21204
klnb.com



CRANBERRY BUSINESS PARK

1009, 1007-1011, 1015 Old Philadelphia Road
Aberdeen, MD 21001 | Harford County

CLICK TO VIEW PROPERTY WEBSITE

For More Information, Please Contact:

Christopher Wright

cwright@klnb.com
443-914-2600

Ben Brooks

bbrooks@klnb.com
443-632-2048

Peter Dudley

pdudley@klnb.com
443-632-2064

100 West Road, Suite 505
Baltimore, MD 21204

klnb.com



[instagram.com/klnbcre](https://www.instagram.com/klnbcre)



[linkedin.com/company/klnb](https://www.linkedin.com/company/klnb)



[facebook.com/KLNBCRE](https://www.facebook.com/KLNBCRE)

While we have no reason to doubt the accuracy of any of the information supplied, we cannot, and do not, guarantee its accuracy. All information should be independently verified prior to a purchase or lease of the property. We are not responsible for errors, omissions, misuse, or misinterpretation of information contained herein and make no warranty of any kind, express or implied, with respect to the property or any other matters.

