



WAREHOUSE CONDO FOR SALE



CONDO SIZE
8,003 SF



CEILING HEIGHT
20' Clear



PARKING
19 Spaces



ZONING
I-5

3656
CENTERVIEW
DRIVE

Chantilly, VA 20151 | Fairfax County

MARC TASKER, CCIM, SIOR
mtasker@klnb.com
703-268-2735

KEENAN WOOFER
kwoofter@klnb.com
703-268-2744

8065 Leesburg Pike, Suite 700 | Tysons, VA 22182

AVAILABILITY



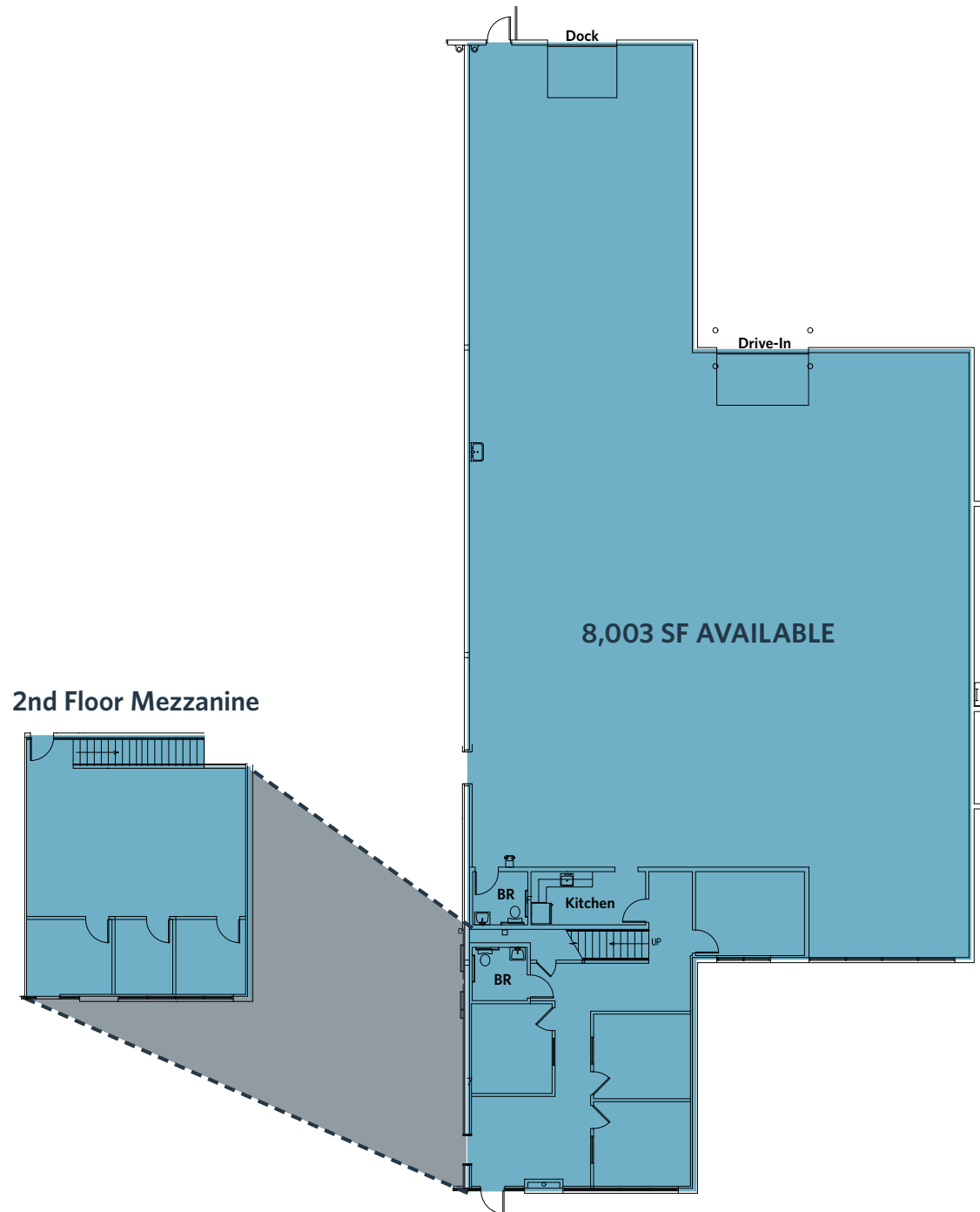
3656 CENTERVIEW DRIVE

- Unit 14 - 8,003 SF
- 2,203 SF of Office with 5,800 SF of Warehouse
- Both Dock and at grade Drive-In
- Fully Conditioned
- \$375 PSF (\$3,001,125)

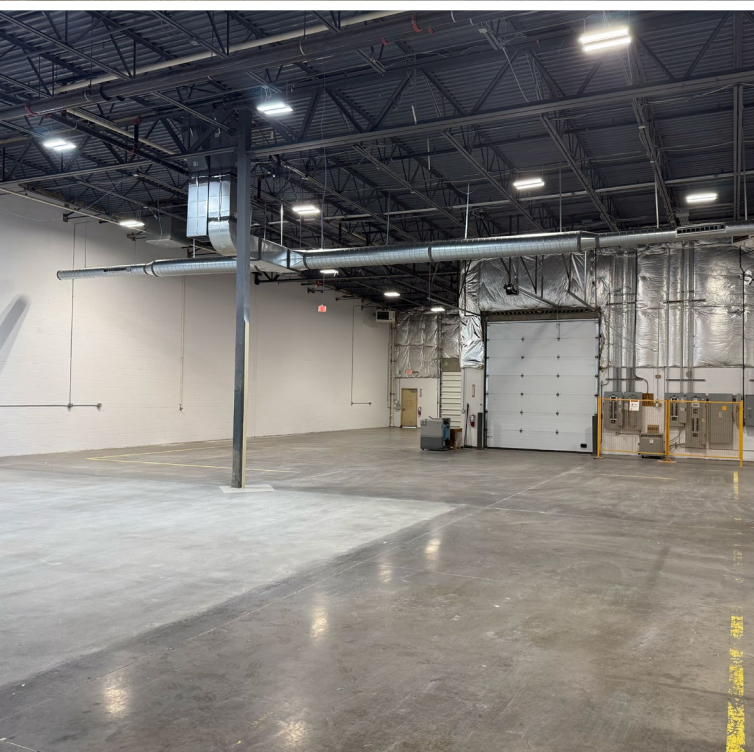
NOTABLE HIGHLIGHTS

- Prime Chantilly location just off Rt. 50 & Rt. 28
- Rear loaded with ample truck court
- One (1) 12' x 14' drive in and One (1) loading dock
- 20' Clear Warehouse
- Minutes from Dulles International Airport
- Ample vehicle parking with 19 spaces
- Heavy Power - 400 Amps @ 277/480 Volt
- Upgraded LED Lighting Throughout

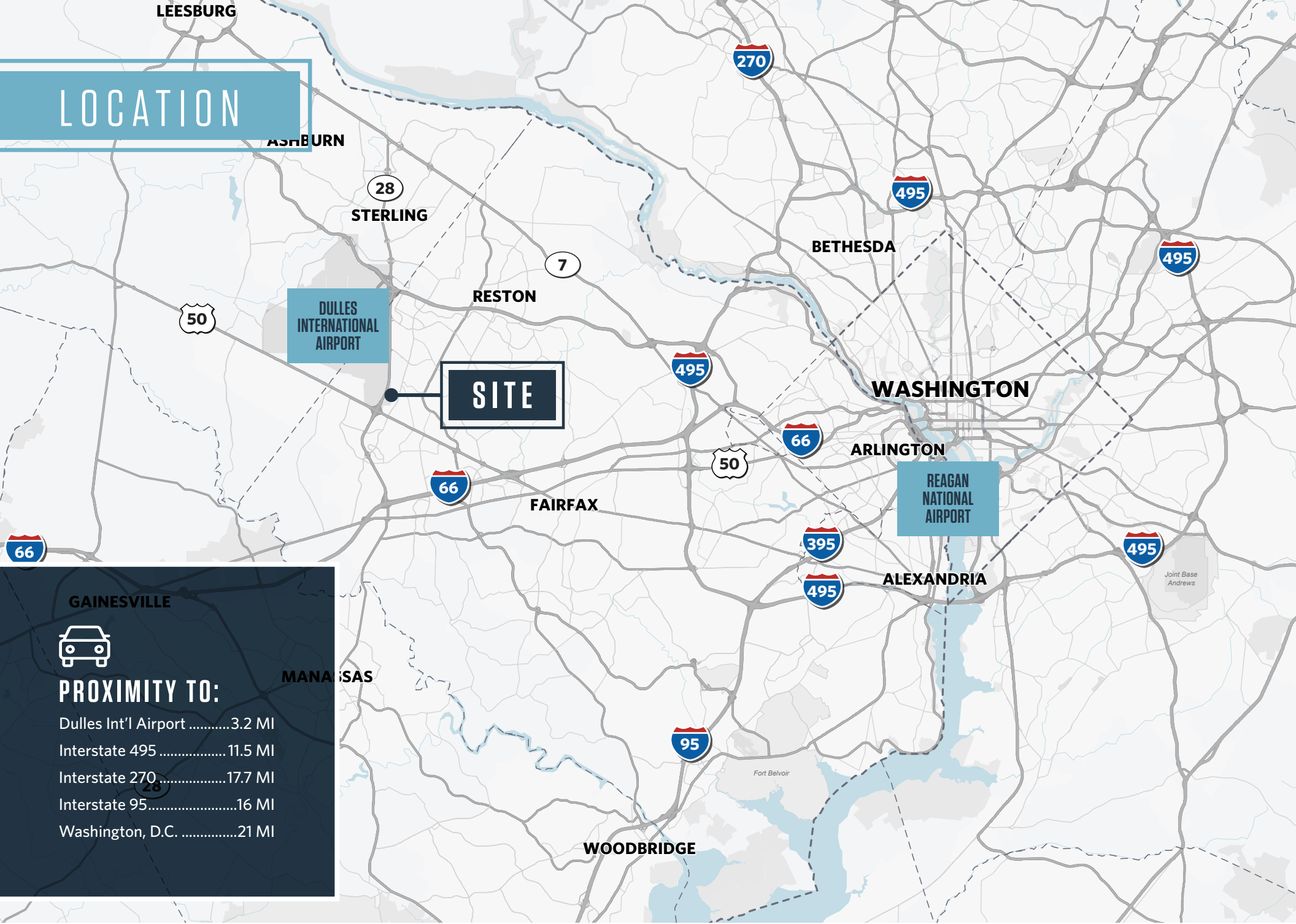
PLAN



PHOTOS



LOCATION



GAINESVILLE



PROXIMITY TO:

- Dulles Int'l Airport3.2 MI
- Interstate 495 11.5 MI
- Interstate 27017.7 MI
- Interstate 9516 MI
- Washington, D.C.21 MI

3656
CENTERVIEW
DRIVE

Chantilly, VA 20151 | Fairfax County

NAI klnb

For More Information, Please Contact:

MARC TASKER, CCIM, SIOR
mtasker@klnb.com
702-268-2735

KEENAN WOOFER
kwoofter@klnb.com
703-268-2744

8065 Leesburg Pike, Suite 700 | Tysons, VA 22182

klnb.com

CLICK TO VIEW PROPERTY WEBSITE



While we have no reason to doubt the accuracy of any of the information supplied, we cannot, and do not, guarantee its accuracy. All information should be independently verified prior to a purchase or lease of the property. We are not responsible for errors, omissions, misuse, or misinterpretation of information contained herein and make no warranty of any kind, express or implied, with respect to the property or any other matters.